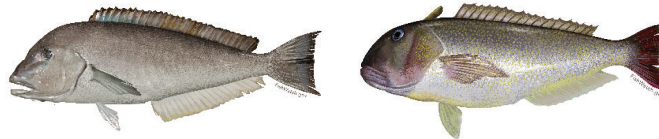




## New Permitting and Reporting Requirements for Recreational Blueline and Golden Tilefish



**NOAA**  
FISHERIES



**Effective August 17, 2020, all recreational vessels fishing for blueline or golden tilefish must have a permit and report their trip within 24 hours of returning to port.**

### Who Does This Impact?

- Vessels fishing for or retaining tilefish from Virginia to Maine.
- For-hire vessels holding an existing GARFO permit who take private recreational tilefish trips.
- States may have additional permitting or reporting requirements for recreational fishing.

### What Do I Need To Do?

- Obtain a Private Recreational Tilefish Permit from the Greater Atlantic Regional Fisheries Office (GARFO).
- Report your trip with one of the available reporting options.

### Why Is This Happening?

- To better characterize and monitor the tilefish fisheries for long-term sustainability.
- More information can be found on the Mid-Atlantic Fishery Management Council's tilefish web page: [mafmc.org/rec-tilefish-evtr](http://mafmc.org/rec-tilefish-evtr).





### Permitting (Search: GARFO Permits)



You must apply for your permit online. There is no cost for the permit.

### How Do I Get a Permit?

Start with registering an account on the **GARFO Fish Online** website: [greateratlantic.fisheries.noaa.gov/apps/login/](https://greateratlantic.fisheries.noaa.gov/apps/login/)

- Create a user name and password.
- Existing permit holders may apply through their current **Fish Online** account.
- Click Initial **Private Recreational Tilefish Permit**.

### Reporting (Search: GARFO eVTR)



You must report all trips that either targeted or retained tilefish to GARFO within 24 hours of returning to port using an approved electronic vessel trip reporting (eVTR) system.

### How Do I Report?

eVTR apps are available for smartphones and tablets. See our website for reporting options and how to get started.

For assistance contact our  
Help Desk at (978) 281-9188 or  
[nmfs.gar.helpdesk@noaa.gov](mailto:nmfs.gar.helpdesk@noaa.gov). For additional  
support, contact your local Port Agent.  
(Search: GARFO Port Agents)

