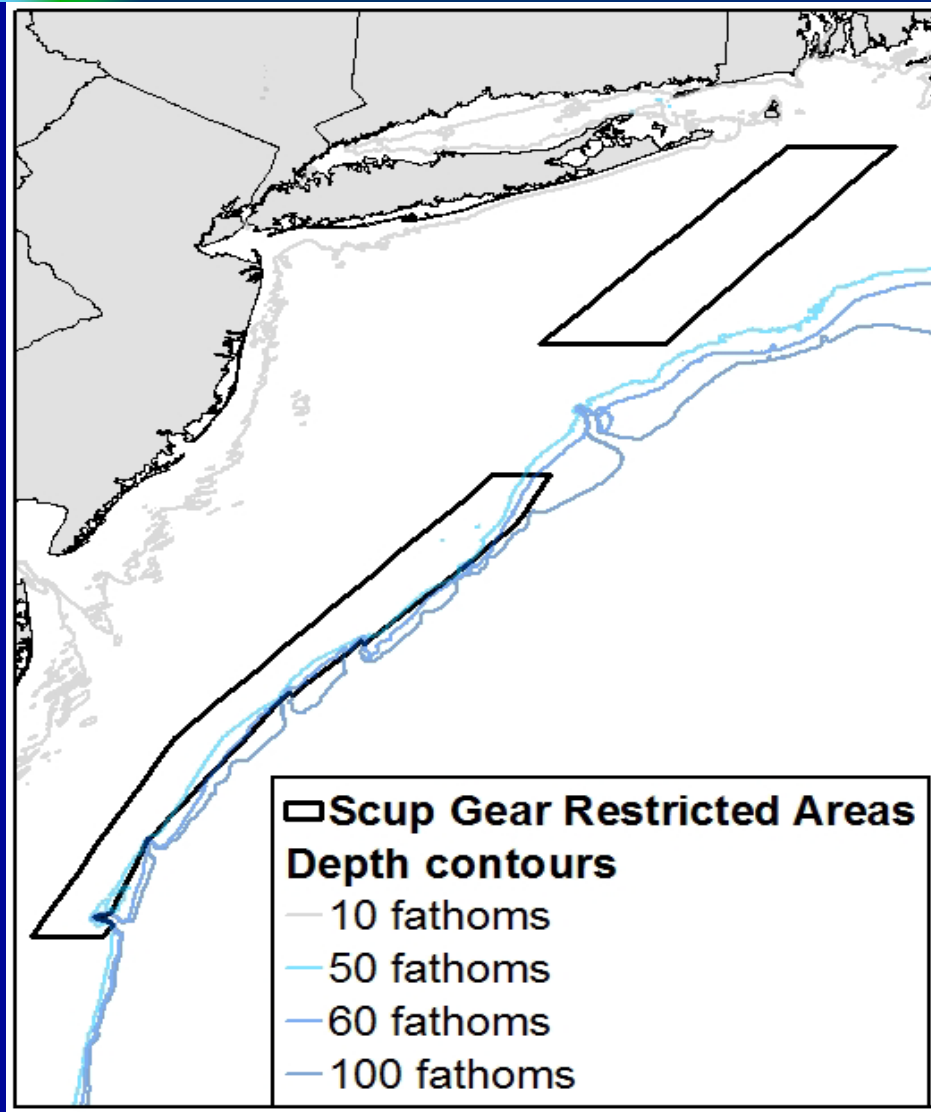


Scup Gear Restricted Areas



Effective dates:

Northern GRA:
Nov 1 – Dec 31

Southern GRA:
Jan 1 – Mar 15



Commercial Discards/GRA Analysis

- Staff analyzing small mesh trends in terms of overall discards and spatial-temporal patterns
- Next: SF/Scup/BSB and MSB Monitoring Committees review discard report and provide feedback as appropriate
- Council Review at August Meeting
 - Council considers next steps...??

