

Kick-off Webinar & Mock Workshop



Wrap-up & Next Steps

Management
Strategy
Evaluation:
Summer Flounder
Recreational
Discards

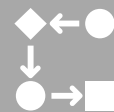
What makes decisions hard?



Sometimes you don't know all the possible alternatives



The objectives may be complex or contradictory, or in dispute



The system dynamics may be poorly known



Even knowing all the other components, the solution (optimization) may be difficult to figure out

Our Vision –

A proactive approach to address opportunities and risks

Co-development of fishery management strategies via...

Structured Decision Making & Management Strategy Evaluation...

A participatory, facilitated process to:

- define our **goals** for the process
- define **management decisions**
- identify **objectives** to consider
- suggest **management procedures**
- specify **model components**
- evaluate **trade-offs** between objectives



My Role –

Impartial guidance through the evaluation process

- Current work
 - New England groundfish MSE
- Facilitation Experience – 10+ years
 - Management of Fraser River sockeye salmon
 - Atlantic salmon hatchery production and release
 - Cormorant management
 - Adaptation of tidal marshes to sea level rise in San Francisco Bay
 - Conservation of New England cottontail and brook floater
 - Evaluating adaptive management of northern prairies
- Structured Decision Making Experience
 - Expert Certification from the National Conservation Training Center
 - Instructor for numerous courses



Why facilitated Management Strategy Evaluation & Structured Decision Making?

Fallible common
practice &
Cognitive biases

Fallible common practice

- Jumping to Alternatives
- Active Emotional Brains
- Lazy Reasoning Brains
- Humans didn't evolve in bureaucracies
- Miscommunication

Potential Sources of Cognitive Discomfort

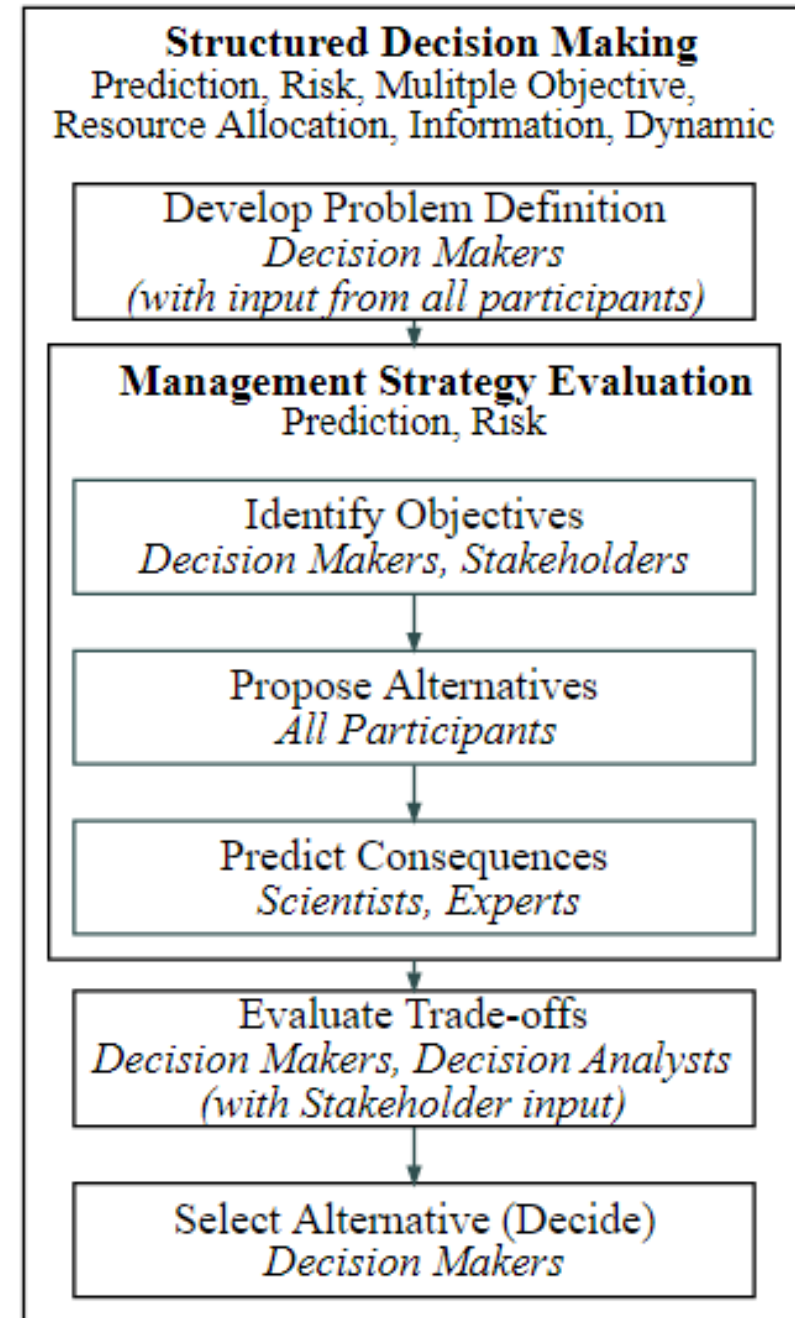
- Statistics
- Economics

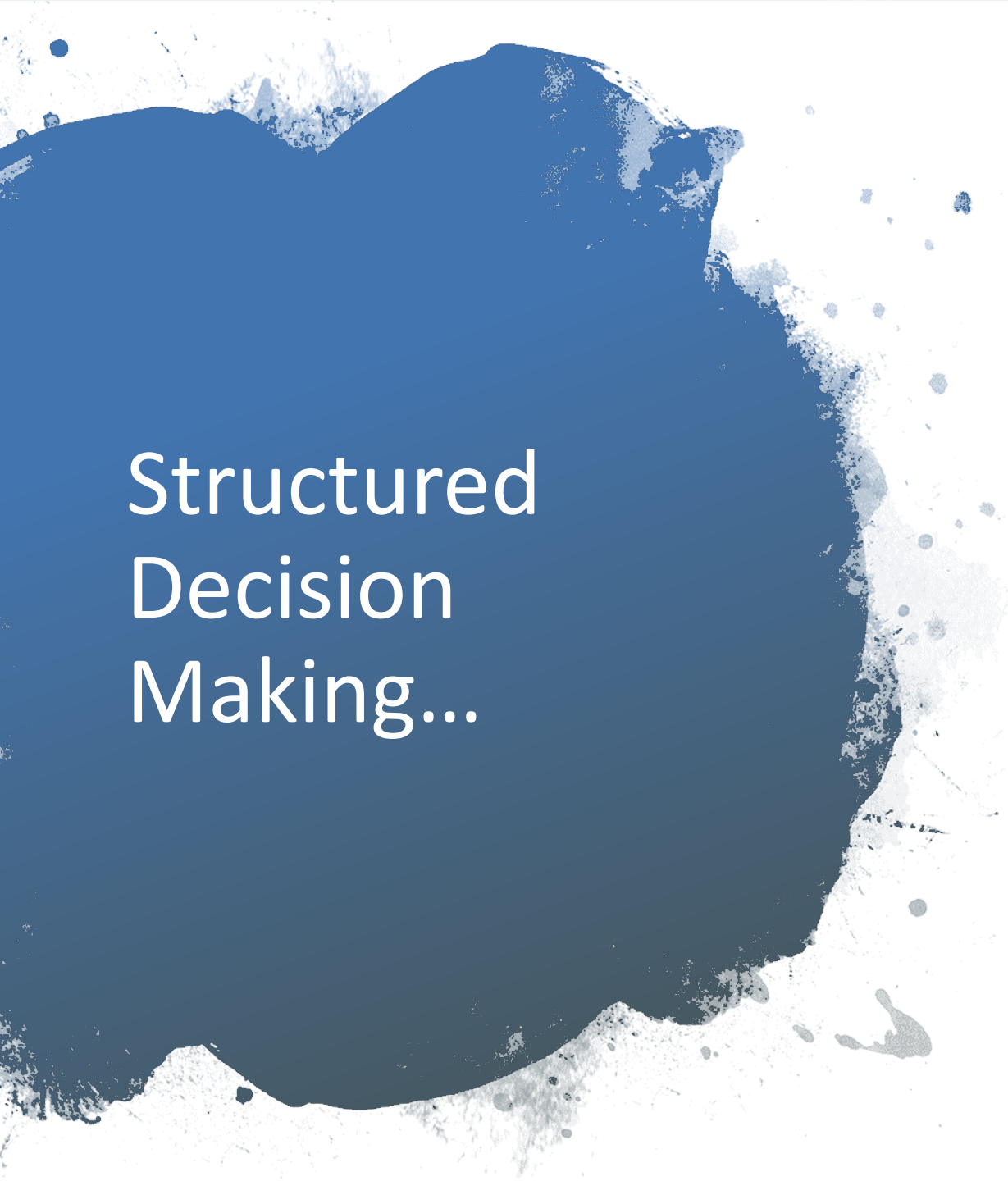
Cognitive Biases

- Anchoring
- Availability
- Representativeness
- Priming
- Simplification
- Rationalization

Why facilitated Management Strategy Evaluation & Structured Decision Making?

The Process





Structured Decision Making...

“A formal application of
common sense for situations
too complex for the informal
use of common sense”
- Ralph Keeney

Wrap Up & Next Steps

- Will see a follow-up survey asking for feedback on webinar and mock workshop
- Seeking interested stakeholders to participate in the summer flounder MSE project
 - Need consistent commitment throughout process
- Three workshops (format TBD) may begin later in 2020 and into 2021
- Anticipated completion early 2022

