



# Butterfish

*June 2021*

# Butterfish Specifications

ABC is projected to increase from 11,993 metric tons (MT) in 2021 to 17,854 MT in 2022 (P\* projection)

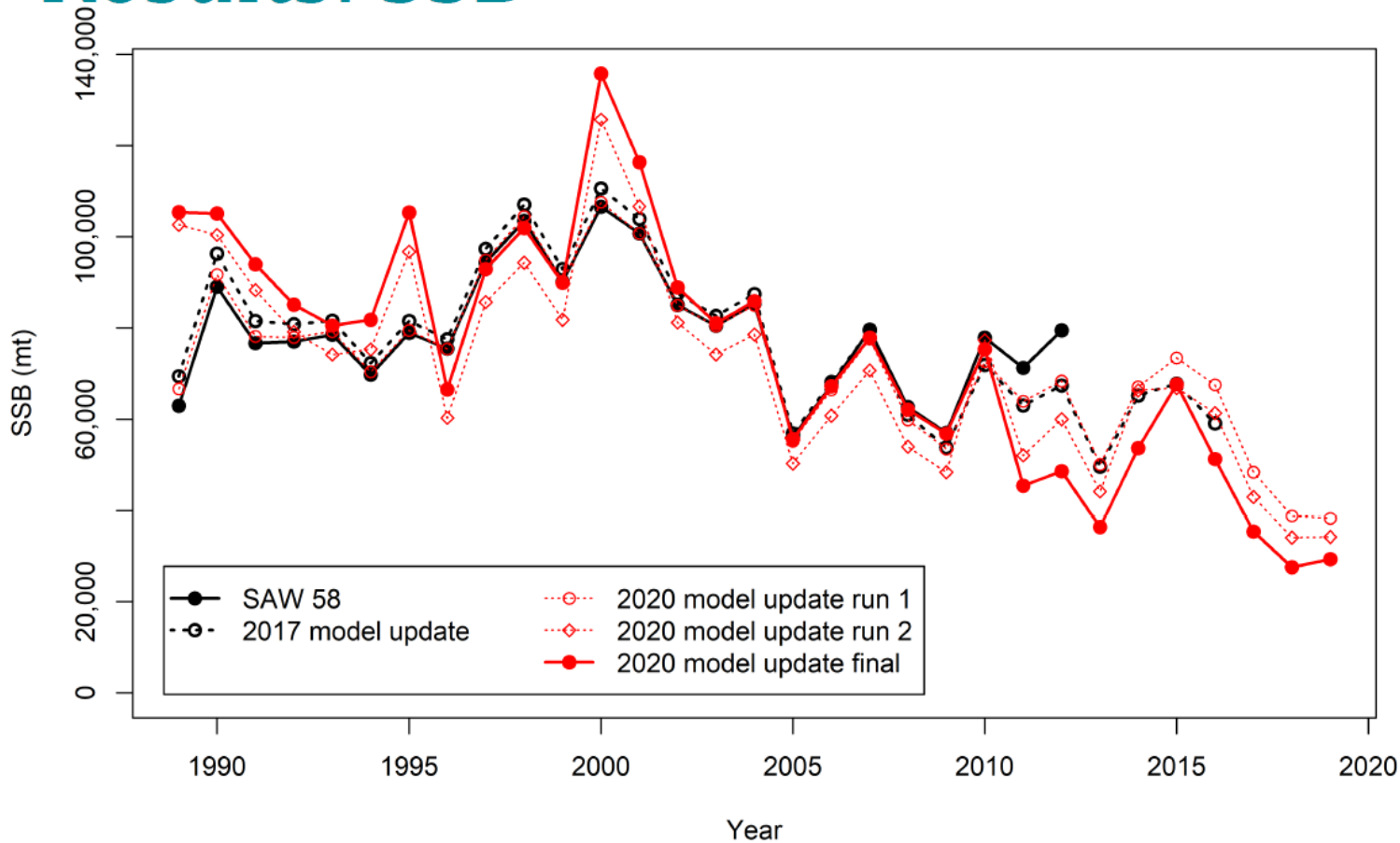
Review, can change if warranted

# Butterfish Specifications

	Specification	2021	2022	Rationale Summary
	OFL	22,053	24,341	From projections
a	ABC	11,993	17,854	From SSC, scientific uncertainty
b	ACT Buffer %	5%	5%	for management uncertainty
c	ACT Buffer	600	893	a times b
d	ACT (a-c)	11,393	16,961	a-c
e	Assumed discards in directed fishing (7.6%)	522	945	from observer data
f	Assumed other discards	637	637	from cap performance
g	Non-longfin discards	1,159	1,582	e+f
h	Butterfish Cap (longfin discards)	3,884	3,884	set by Council
i	Total discard set-aside	5,043	5,466	g+h
j	Landings or "Domestic Annual Harvest" (DAH)	6,350	11,495	d-i
k	Close primary directed at this amount, i.e. with 1,000 mt left; go to 5,000 pound trip limit	5,350	10,495	j-1000

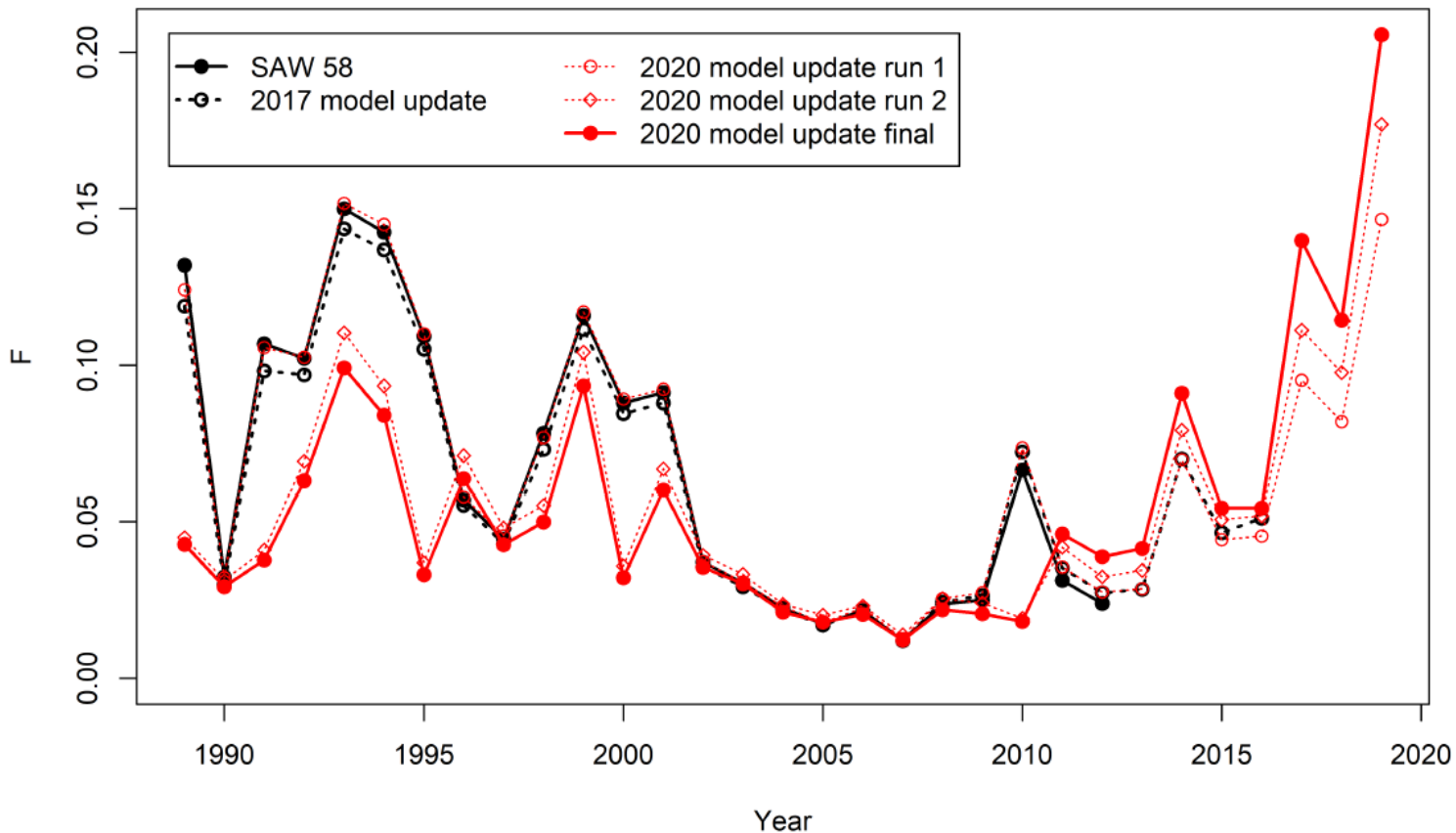
# Butterfish Biomass to 2019

## Results: SSB



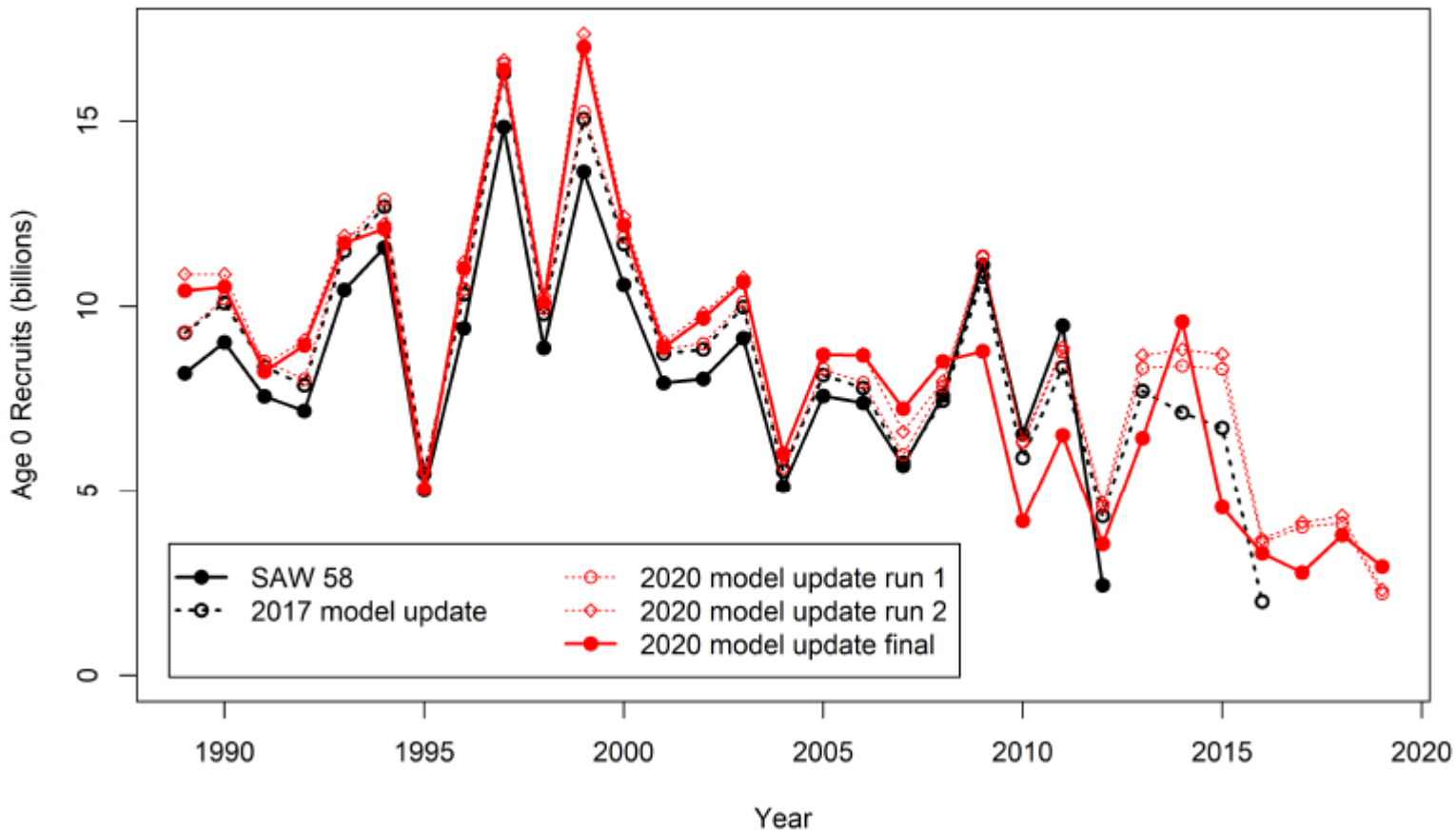
# Butterfish F to 2019

## Results: F



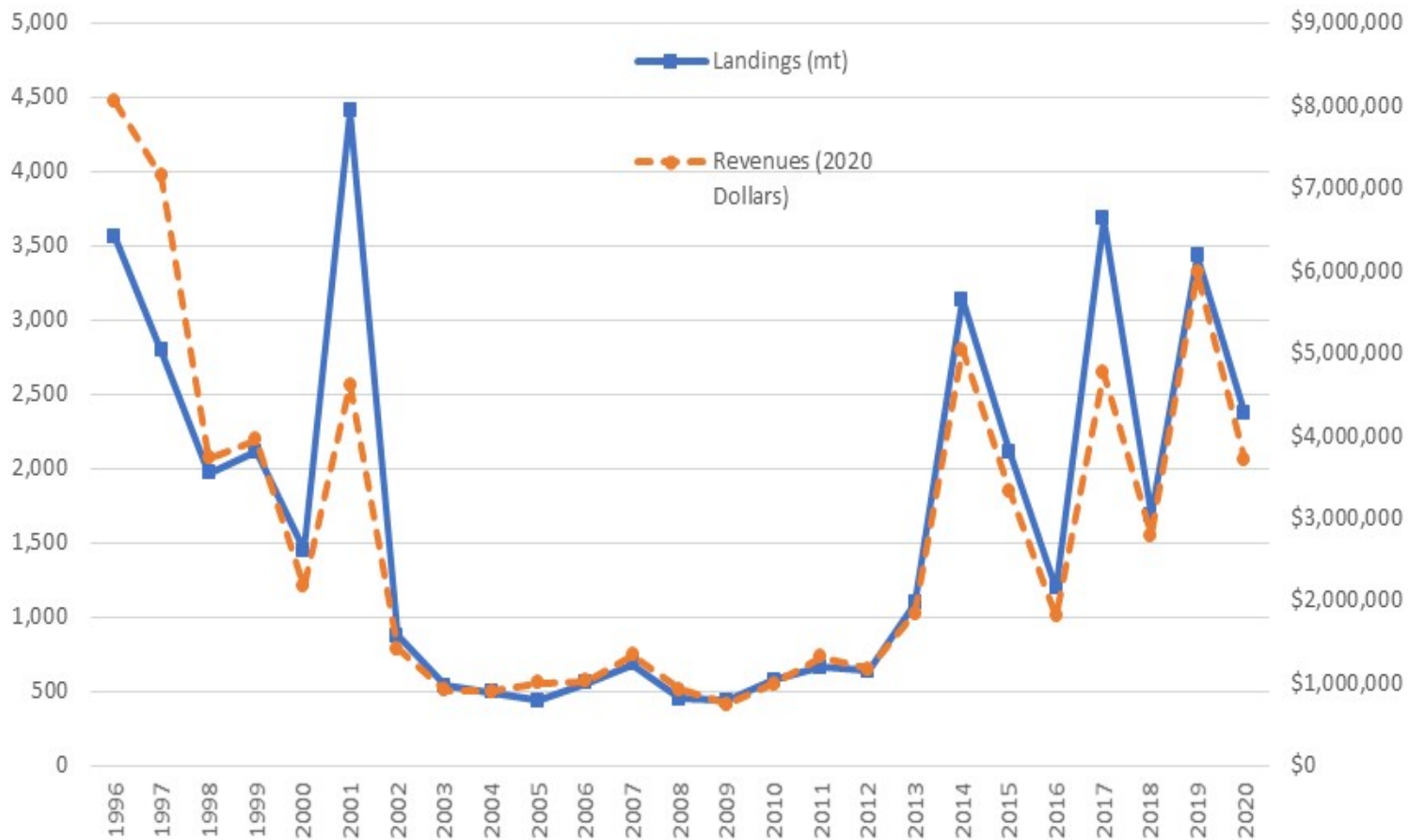
# Butterfish Recruitment to 2019

## Results: recruitment

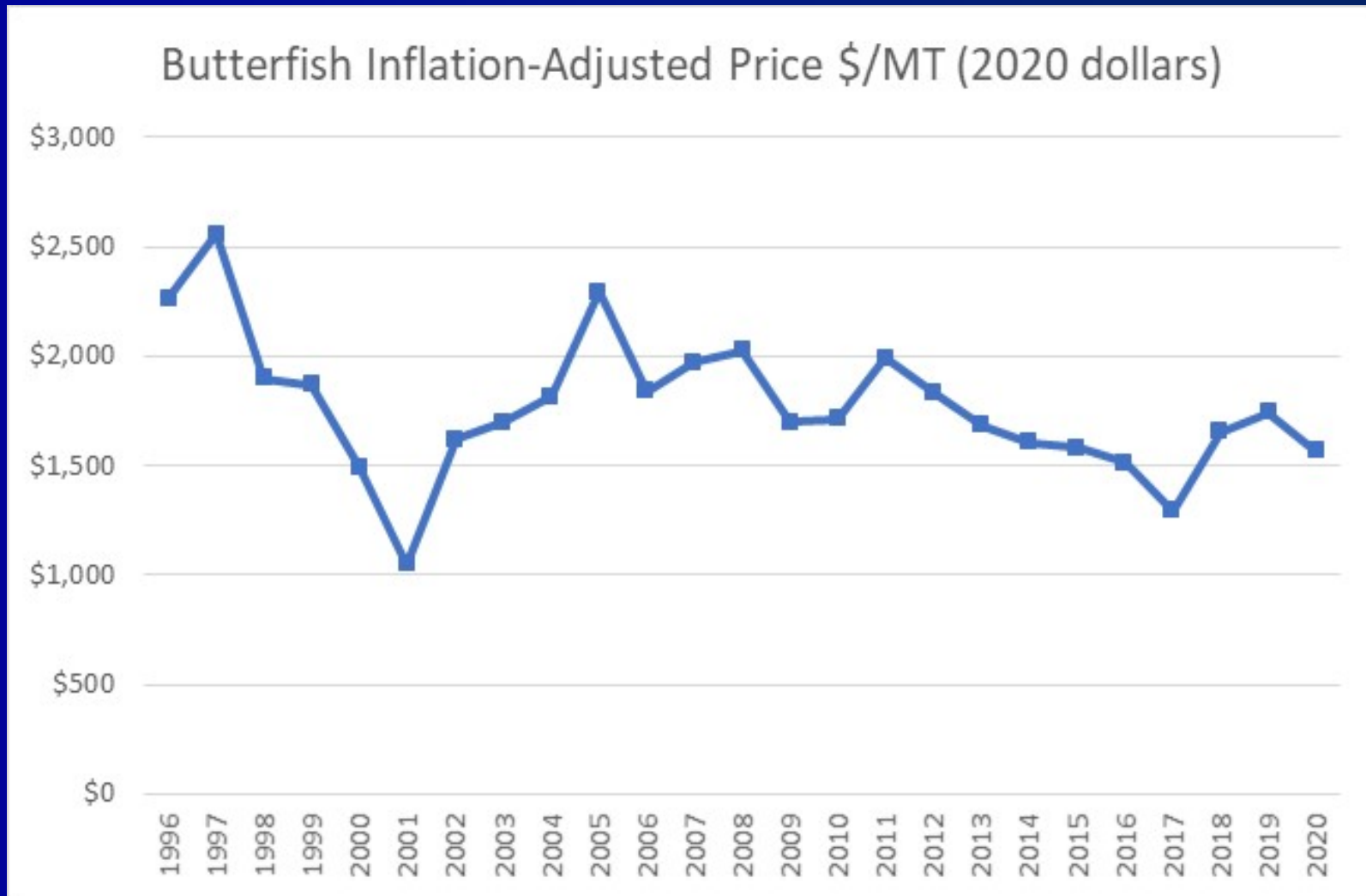


# From Fishery Info Doc

Butterfish Landings (MT, left and solid blue line) and Ex-Vessel Revenues (2020 dollars, right and dashed orange line) 1996-2020



# From Fishery Info Doc





# Butterfish - FPR

- 2020 butterfish demand was mostly status quo outside of Covid
- There's still limited interest in this fishery
- Dogfish abundance has been an issue for the directed fishery

# SSC Recommendations...

# *Butterfish*

- Several items of concern
  - Biomass has been declining for some time and recruitment has been down since 1999.
  - Stock biomass has remained above  $B_{msy}$  due to low fishing mortality.
  - Following a 2/3 reduction in ABC between 2020 and 2021 the stock biomass is projected to increase in 2022.
  - Projections were based on the most recent 10 years of recruitment estimates reflecting a period of lower productivity.
- But, SSC concluded that a quota reduction was not necessary for 2022.
  - The projected total removals for 2020 are likely to be biased high suggesting a slightly lower  $F$  than used in the projections.
  - Industry members reported almost no chance that the quota in 2021 would be attained due to a weakened export market for butterfish and low domestic demand.
  - Results of the RTA for Butterfish will be available in 2021 for use by the SSC in 2022.
- **SSC urged that trends in abundance should be followed closely, but did not find any compelling evidence to reject the previously approved ABC of 17,854 mt for 2022.**

# Staff/Monitoring Committee Recommendations

- Specification changes do not appear warranted at this time.

# Staff/Monitoring Committee Recommendations

- Mesh Requirement - Executive Order on Seafood Competitiveness
- Some AP concern in past that 3" mesh requirement to retain more than 5,000 pounds of butterfish could cause reg. discards
- Does not appear to be substantial at this time based on observed longfin trips.
  - Higher catches infrequent, vast majority of discards market-driven
- Can continue to monitor...recommends no changes.

# Butterfish

- Questions?
- (No action needed)