



Offshore Wind Energy Update

Brian Hooker
Office of Renewable Energy Programs

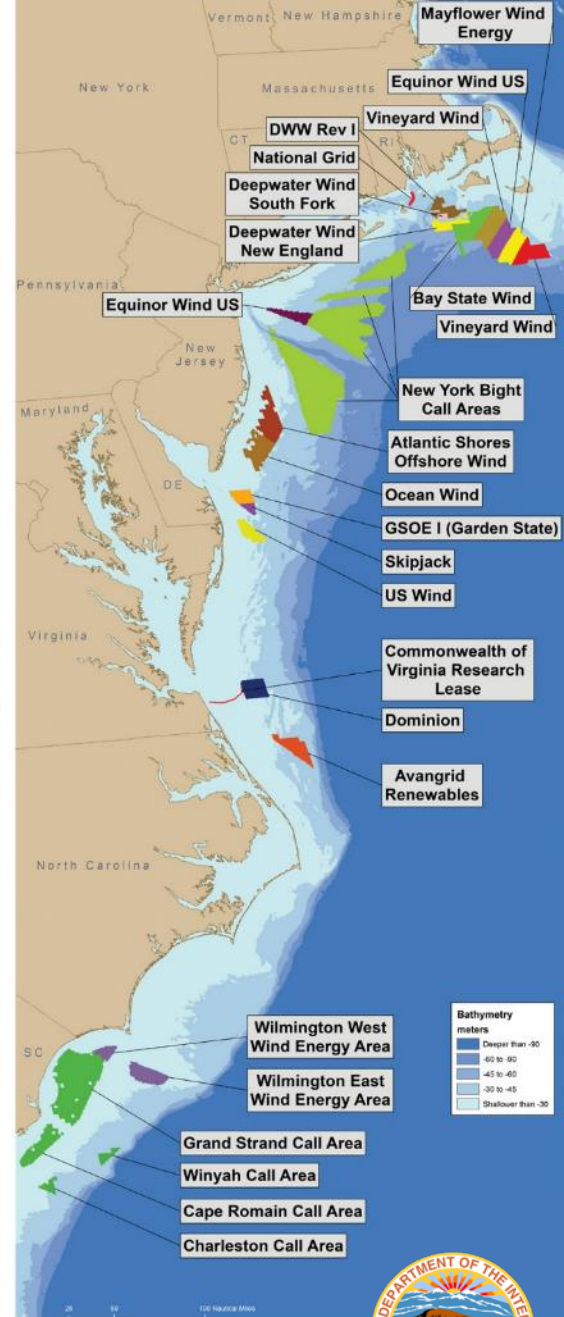
Mid-Atlantic Fisheries Management Council

June 9, 2021

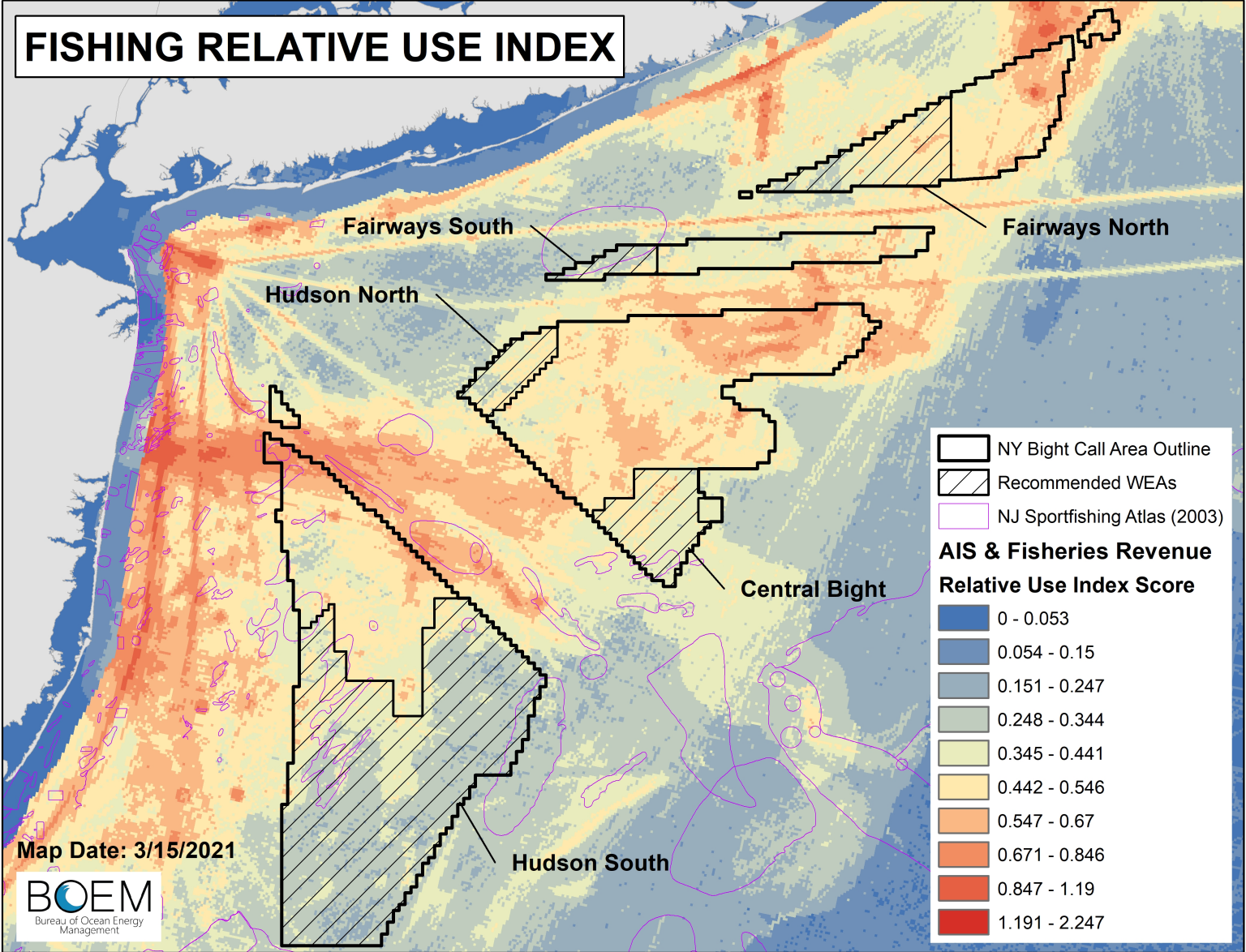




Renewable Energy Program by the Numbers



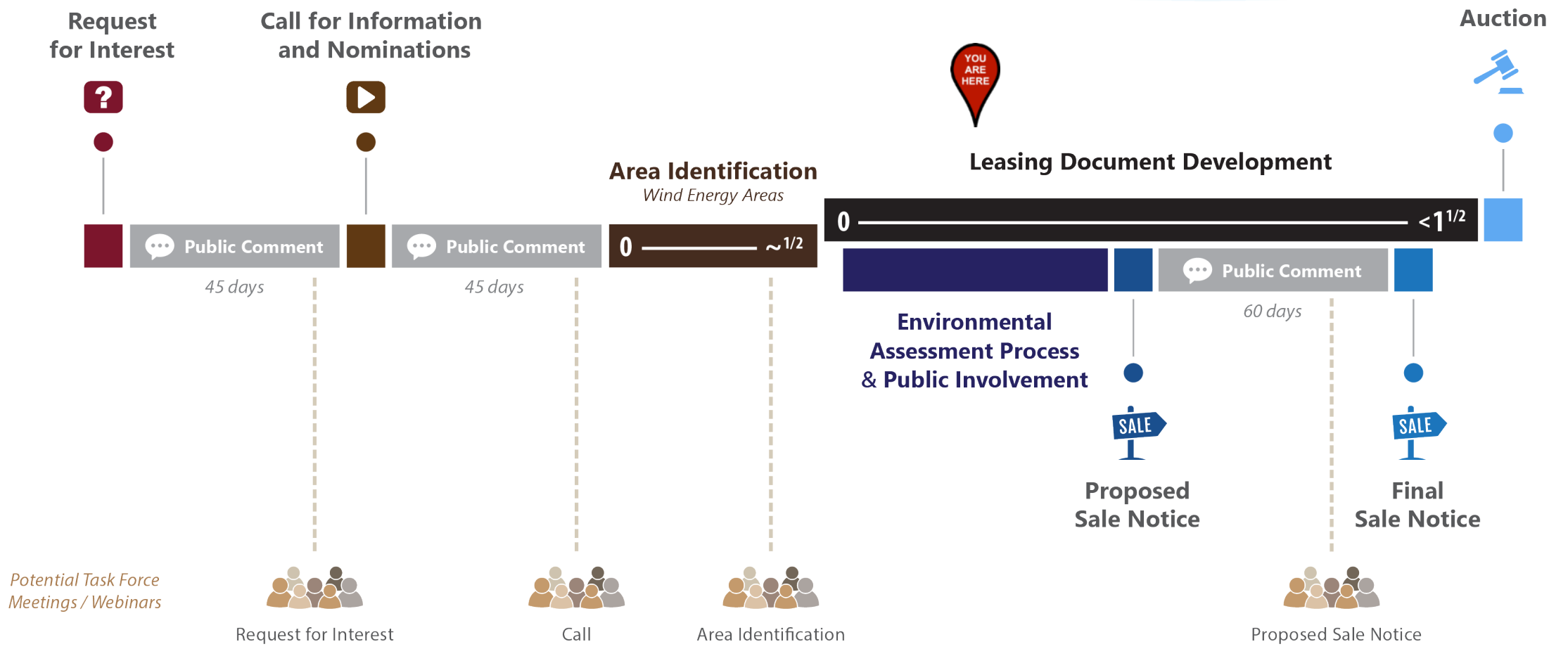
NY Bight Leasing



NY Bight Timeline

- **September 2017**
 - Request from NY
- **April 2018**
 - Call For Information and Nominations
- **Nov 2018**
 - Task Force meeting – Draft WEAs
- **March 2019**
 - New York Bight Transit Lane Workshop
- **December 2020**
 - Revised Department of Defense Analysis
- **March 2021**
 - WEAs announced
- **April 2021**
 - Task Force Meeting – Proposed Sale Notice
- ***Anticipated June 2021***
 - *Publish Proposed Sale Notice*

Request for Interest to Lease Sale



Environmental Assessment

Assesses Environmental Effects Associated with Leasing

- Site Characterization Activities
 - biological, geological, geotechnical, and archaeological surveys
- Site Assessment Activities
 - meteorological and oceanographic buoy deployment

Scoping Comment Period ended April 28, 2021

Comment period on EA will be concurrent with the Notice of Availability



Proposed Sale Notice

What is in a PSN?

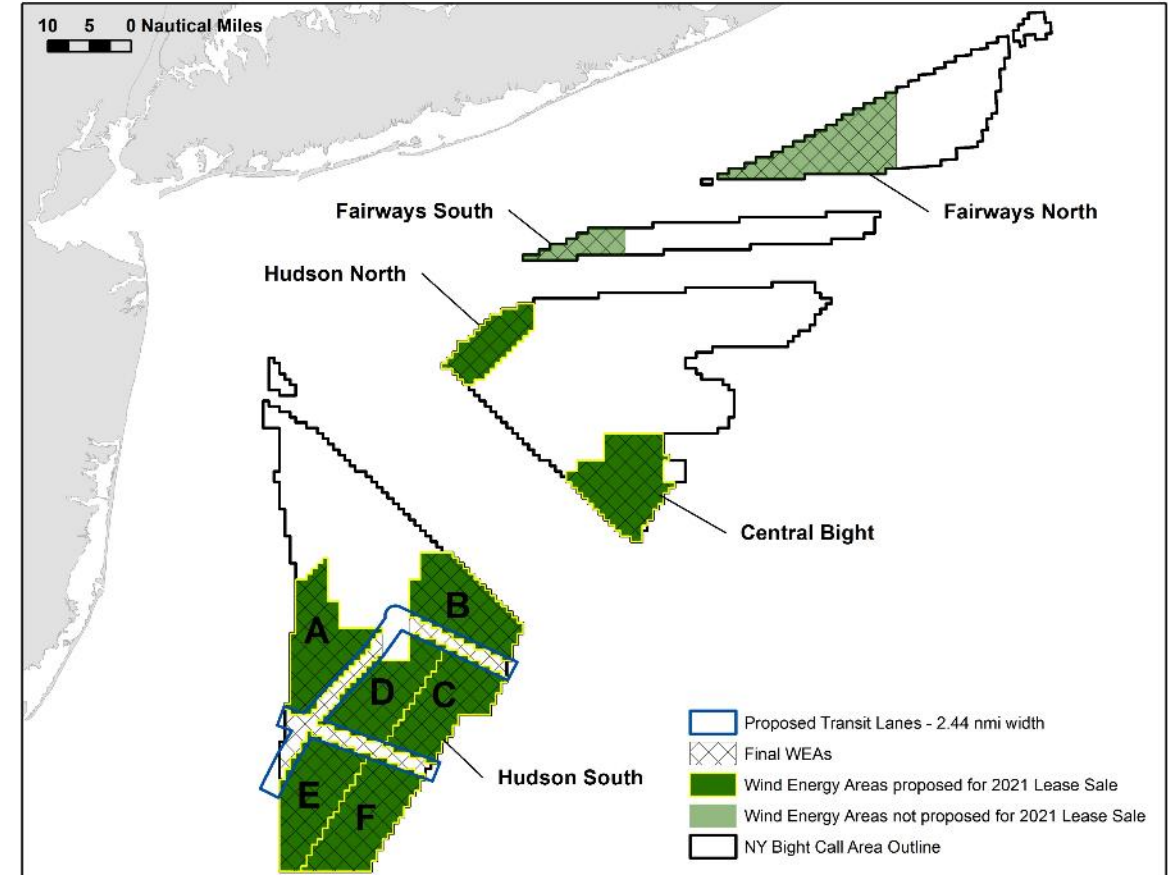
- Area for leasing
- Fiscal terms
- Auction details and format
- Proposed lease terms
- Last opportunity to submit company qualification materials
 - Legal
 - Technical
 - Financial
- Nonmonetary factors

Auction Seminar for potential bidders



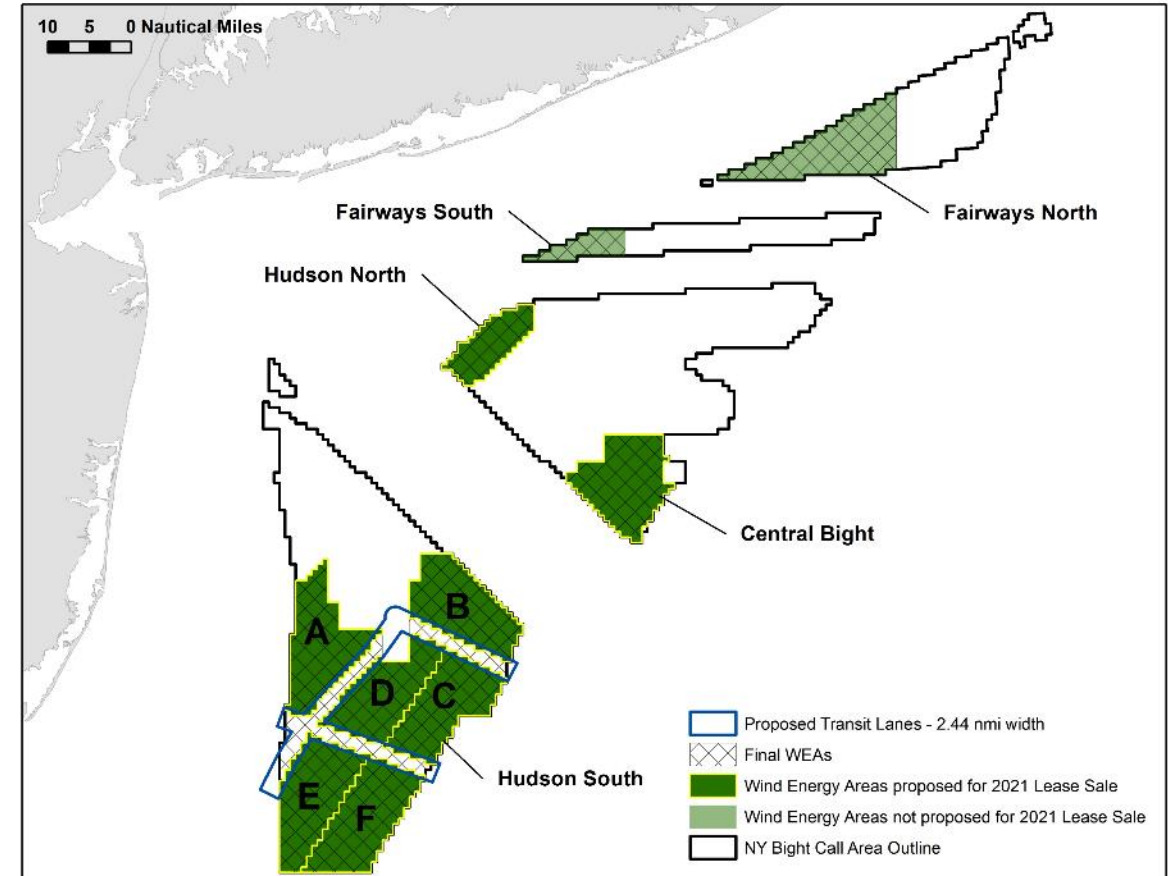
Proposed Lease Areas

- Represents a balance between existing users and emerging industry
- Eight areas
 - 627,000 acres
 - 7.6+ GW, conservatively
 - ~2.7 million homes powered
- Fairways North and South
 - Not considered for leasing, in part, due to maritime traffic, proposed fairway, commercial fisheries, commercial viability



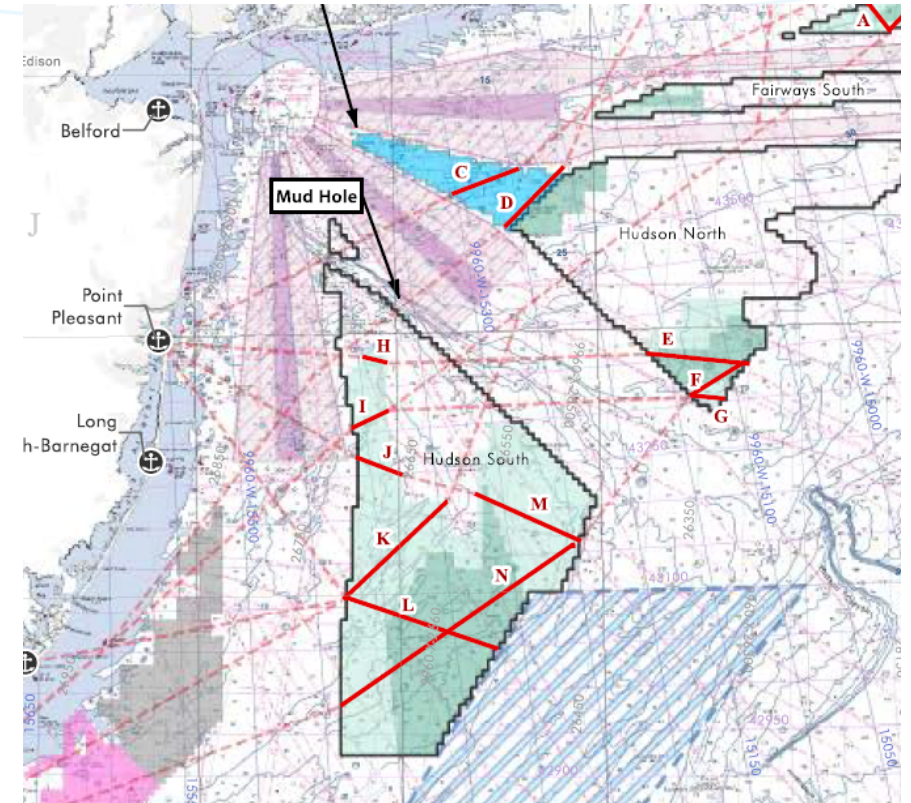
Proposed Lease Areas: Hudson North and HS-A

- **Aware of outstanding conflicts**
 - Hudson North – USCG Proposed Tug Tow Lane
 - HS-A – DOD Activities

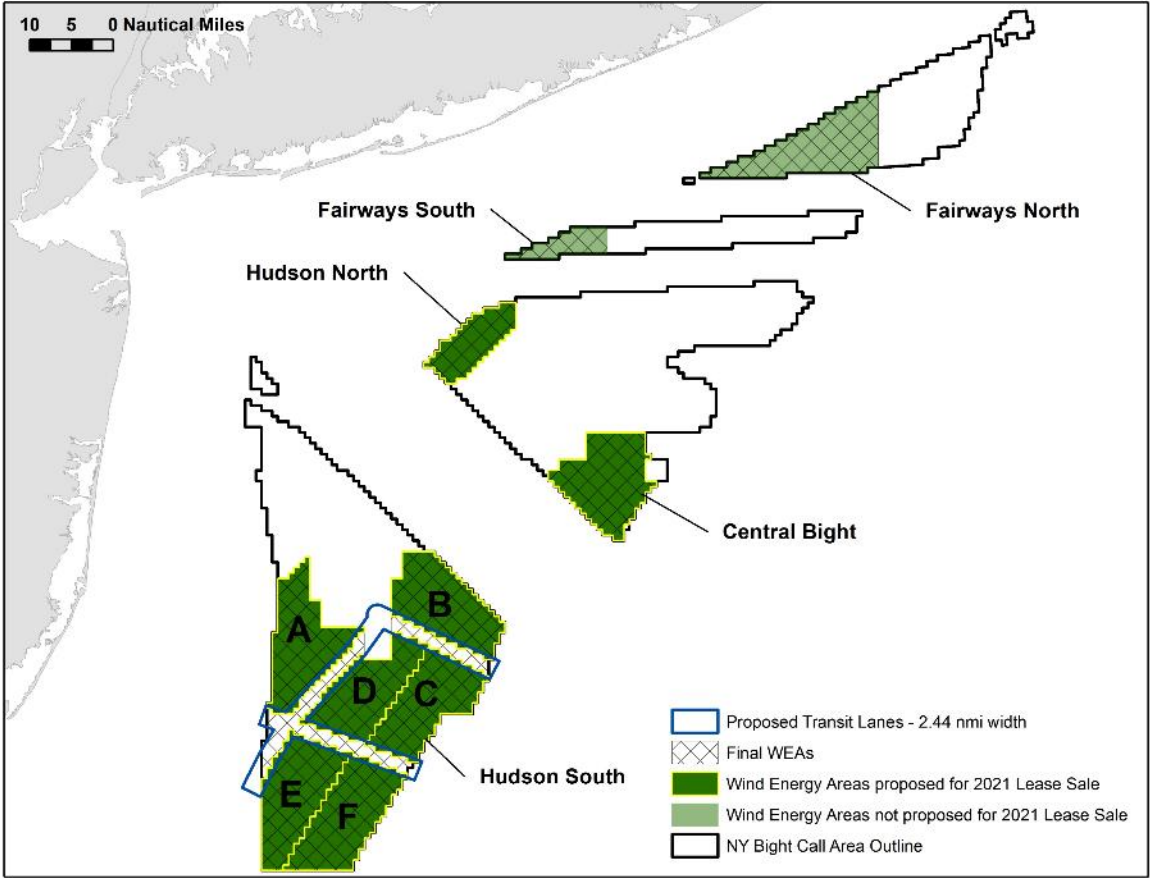
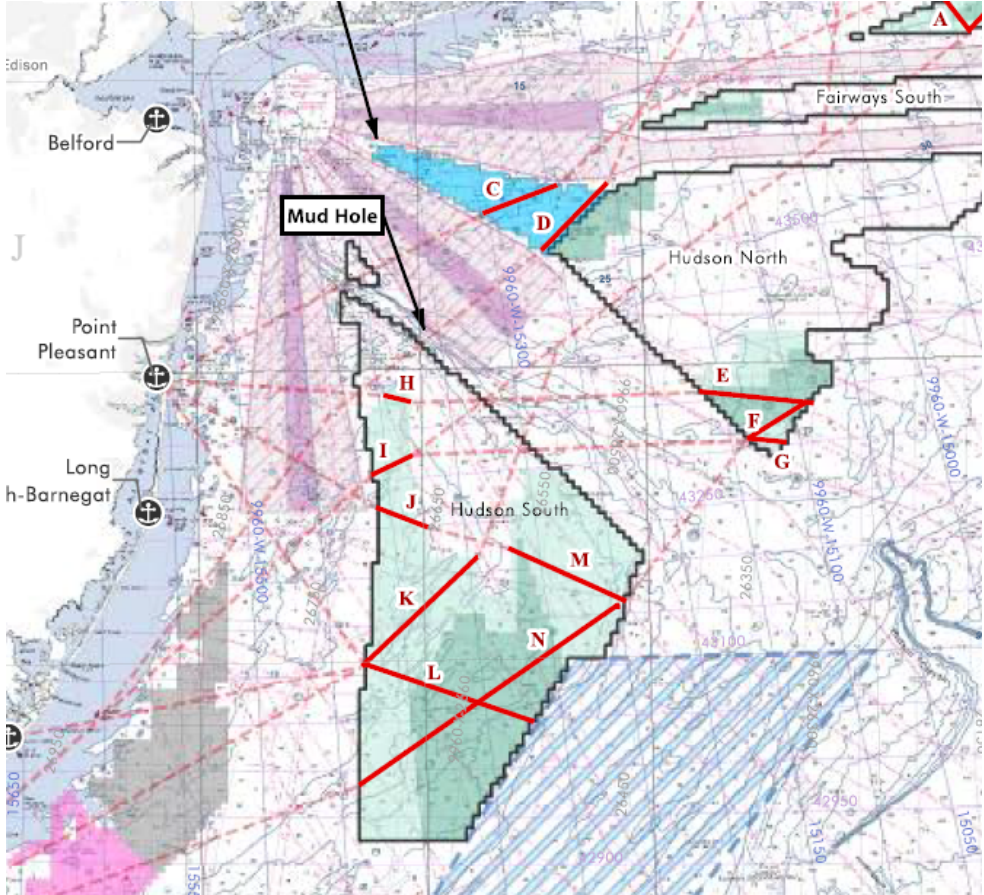


Hudson South: Transit Lanes

- **NYSERDA, NYSDEC, and RODA Workshop and Outreach Summary**
 - June 2020
- **Transit Lanes Width**
 - 2.44 nmi wide
 - Permanent International Association of Navigation Congress (PIANC)
 - Areas of overlap – no surface occupancy

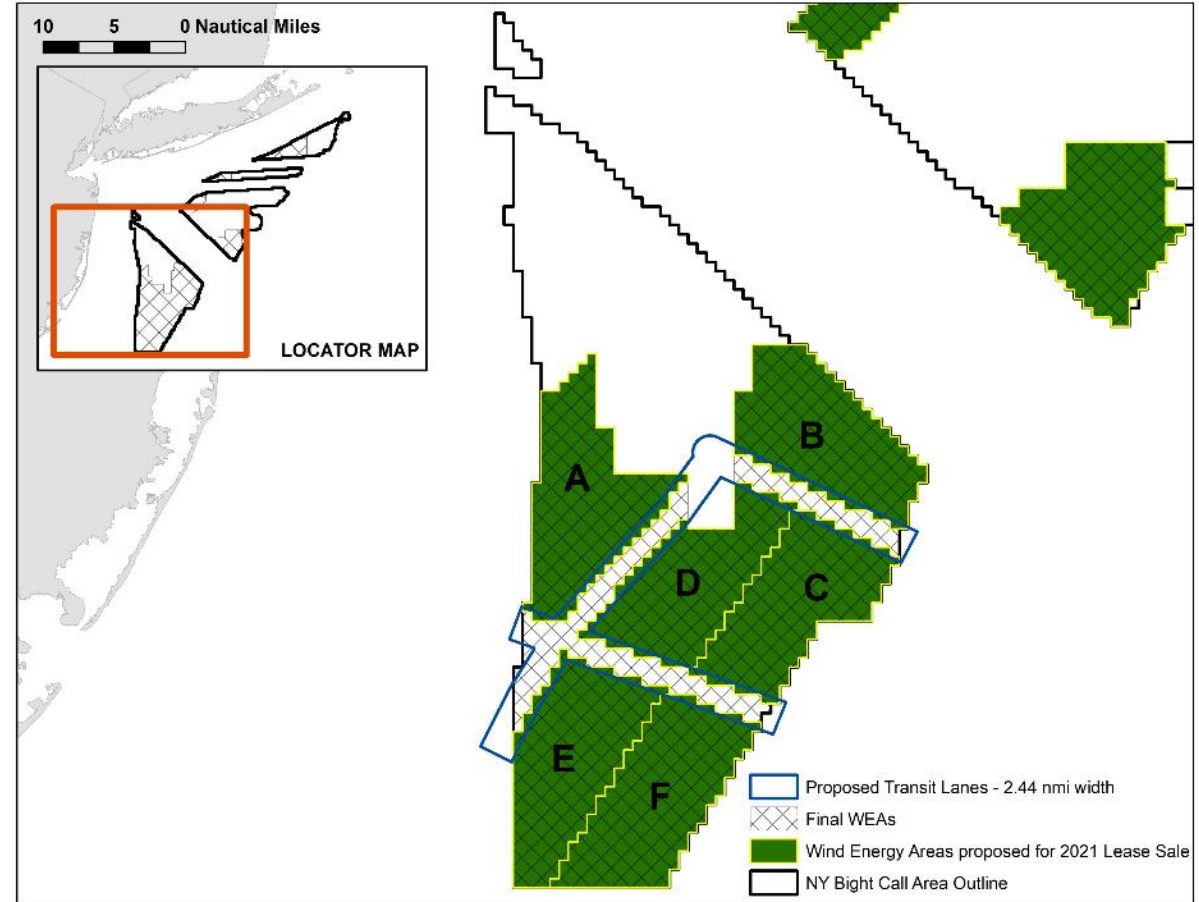


Hudson South: Transit Lanes



Hudson South

- **Hudson South was subdivided so each area:**
 - is of roughly equal commercial viability and size;
 - includes transit lanes to account for vessel traffic patterns, fisheries, and DoD concerns;
 - is laid out in a manner to reduce wake effect; and
 - facilitates fair return to the government pursuant to the Outer Continental Shelf Lands Act.



New York Bight Milestones

Milestone	Action	Target Date
Environmental Assessment	NOA Draft EA	July 2021
	30-Day Comment Period	July-August 2021
	NOA Final EA/FONSI	September 2021
Proposed Sale Notice	Publish PSN	June 2021
	60-Day Comment Period	June - August 2021
Final Sale Notice	Publish FSN	Fall 2021
	Minimum 30-Day Waiting Period	
Lease Sale	Sale Date	Late 2021 or Early 2022

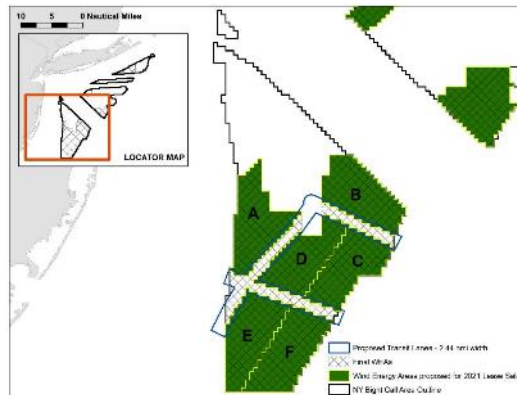
Questions for Council Consideration

- **Number, size, orientation, and location of the proposed lease areas**

- which lease areas, if any, should be prioritized for inclusion, or exclusion, from this lease sale and/or future lease sales
- Alternative subdivisions

- **Transit Corridors**

- Reflections on proposed transit corridors



- **Stakeholder Engagement**

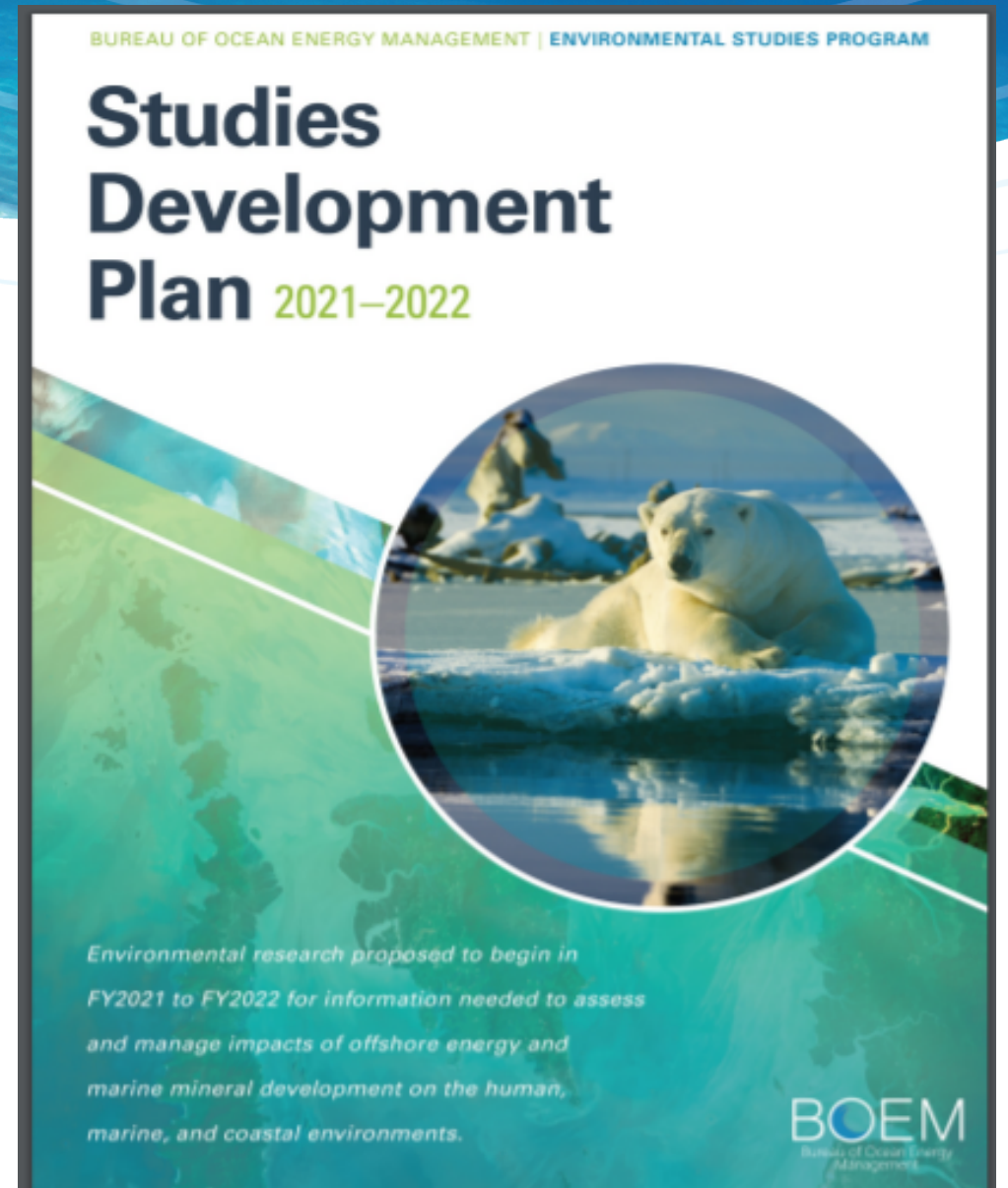
- BOEM is proposing a lease stipulation that would require lessees provide a semi-annual progress report that summarizes engagement with existing users
- Methods to improve coordination between lessees, stakeholders, and Tribes

- **Prescribed layouts**

- Should BOEM consider prescribing uniform and aligned turbine layouts to Lease Areas, especially in the Hudson South WEA?

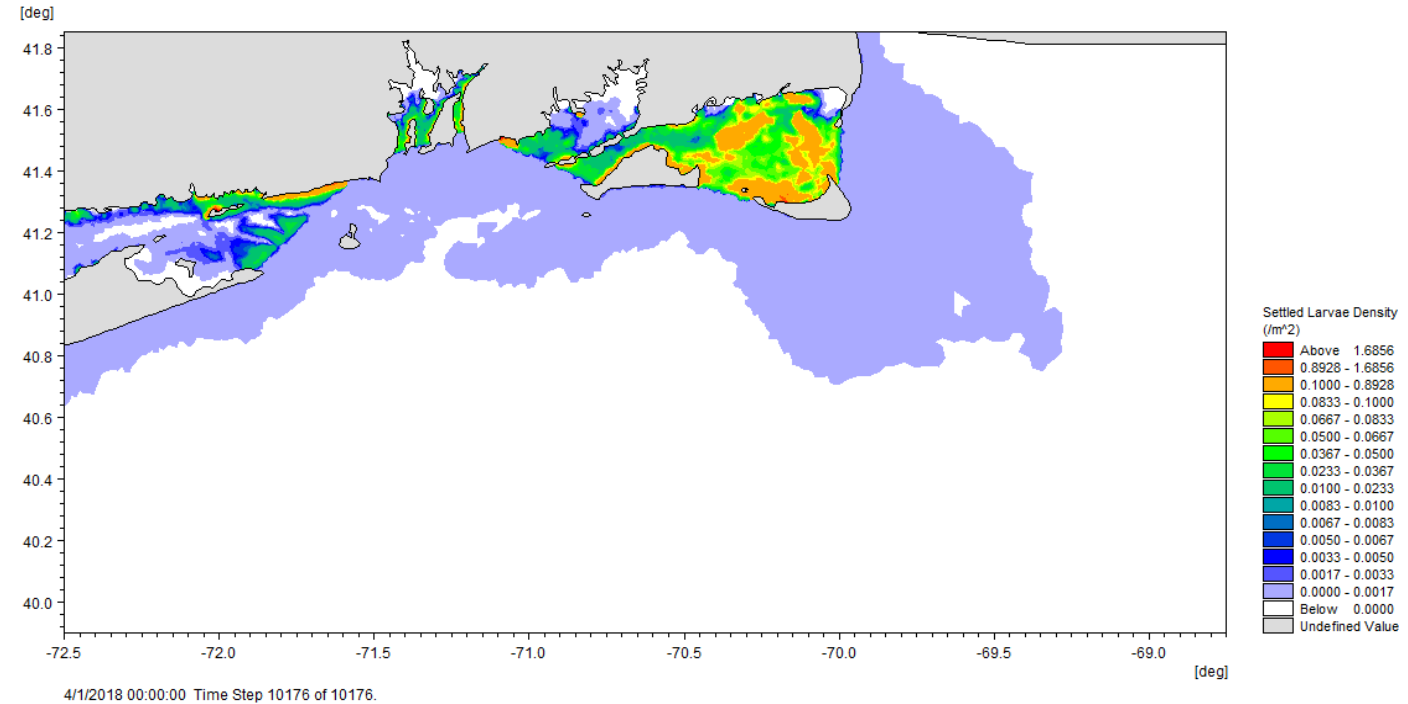
Environmental Studies Program

- BOEM concluded solicitation for 2022 study ideas last winter
- Study ideas are reviewed by the Standing Committee on Offshore Science and Assessment (COSA) convened under the National Academy of Sciences (summer)
- Results of studies are incorporated into BOEM environmental assessment and decision-making process



Hydrodynamic Modelling

- Project was awarded to DHI and CSA, tasks included:
 - Desktop Review
 - Hydrodynamic model development
 - Particle tracking/agent-based model development
 - Model scenarios
 - 3 “particles”
 - Atlantic sea scallops
 - Silver hake
 - Summer flounder
 - 4 OWF scenarios
 - Final Report: Imminent



Settlement of summer flounder: baseline project area

Other Ongoing Fisheries Studies Updates

- **Movement Patterns of Fish in Southern New England**
- **Fish acoustic effects**
 - BSB & Squid Part 1
 - BSB & Squid Part 2
- **Surfclam economic impact model**
- **NMFS Bottom Trawl Survey - Observation System Simulation Experiment (OSSE)**



BOEM

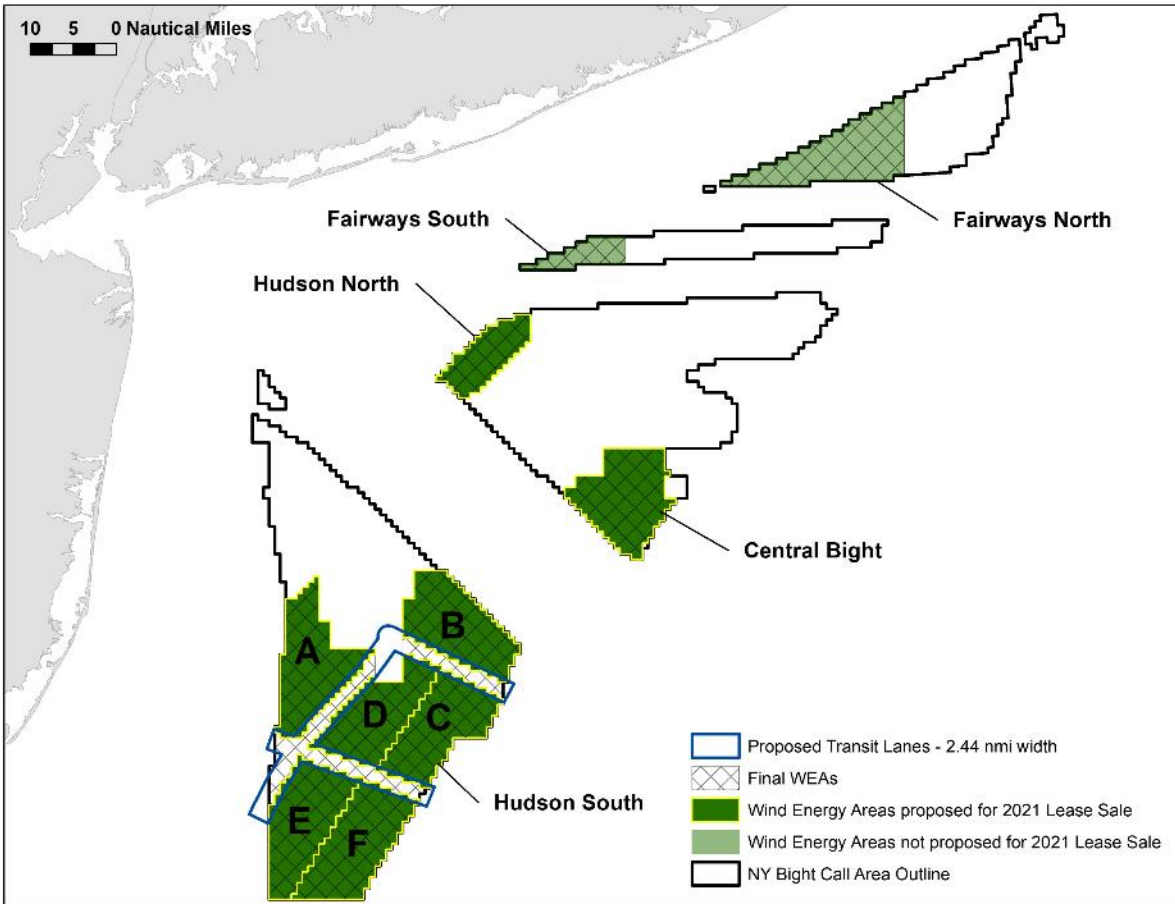
Bureau of Ocean Energy
Management

BOEM.gov



Brian.Hooker@boem.gov | (571) 393-4367

Proposed Lease Areas: By the Numbers



Lease Area	Acres	Installation Capacity (MW) ¹	Homes powered ²	Power Production (MWh/yr) ³
Central Bight	84,688	1,028	359,857	3,602,678
Hudson North	43,056	523	182,954	1,831,628
HS-A	85,755	1,041	182,954	3,648,088
HS-B	84,332	1,024	358,344	3,587,533
HS-C	80,062	972	340,200	3,405,885
HS-D	76,504	929	325,081	3,254,525
HS-E	85,044	1,032	361,369	3,617,822
HS-F	87,890	1,067	373,462	3,738,893
Total	627,331	7,616	2,665,659	26,687,052

¹ Megawatts (MW) based upon 3MW/sqkm. Note this energy density conversion ratio is conservative, BOEM is reviewing COPs for projects with twice the energy density used here.

² Based upon 350 homes per MW

³ Megawatt hours per year (MWh/yr) Formula = Capacity (MW) * 8760 (hrs/yr) * 0.4 (capacity factor)