

# Updating Commercial Fisheries Data on the Northeast and Mid-Atlantic Ocean Data Portals

Nick Napoli, NROC & MARCO  
Fiona Hogan, RODA



**NROC**  
Northeast Regional  
Ocean Council

**MARCO**  
MID-ATLANTIC REGIONAL  
COUNCIL ON THE OCEAN



The screenshot shows the 'NORTHEAST OCEAN DATA' portal. At the top, it says 'Maps and Data for Ocean Planning in the Northeastern United States'. The main navigation includes 'HOME', 'ABOUT', 'CASE STUDIES', 'THEME MAPS', 'DATA EXPLORER', and 'RESOURCES'. The 'DATA EXPLORER' section features a large map with various data layers. Below this are sections for 'NEWS' with recent articles, 'MAP GALLERIES' with a featured 'Offshore Wind' map, and 'FOLLOW US' with social media links. The 'THEME MAPS' section lists categories like 'MARINE LIFE & HABITAT', 'COMMERCIAL FISHING', 'ENERGY & INFRASTRUCTURE', 'RECREATION', and 'WATER QUALITY'. The 'CASE STUDIES' section highlights 'U.S. Navy Uses Data Portal to Select Test Site for Unmanned Underwater Vehicle' and 'Coast Guard Uses Data Portal in Watership Management in the Northeast'.

The screenshot shows the 'MARCO MID-ATLANTIC OCEAN Data Portal' homepage. The top navigation includes 'MAP', 'NEWS', 'DATA', 'HELP', and 'LOG IN'. The main banner features a large map with the text 'Coast Guard Proposed Anchorage & Study Areas' and 'Join our Jan. 21 webinar for demonstrations of new layers and how they can be used for analysis'. Below the banner are three featured sections: 'View Maps' (Browse over 5,000 maps showing fishing grounds, marine life habitats and much more in Marine Planner), 'How to Use the Portal' (Browse our library of tutorial materials, 'How Tuesday' webinars and Portal use case studies), and 'Collaborate' (Work with friends in a Group, schedule a Portal training, or share your feedback and questions with us).

# Overview of Mid-Atlantic and Northeast Ocean Data Portals

- Over 5,000 map products showing the footprint of activities and distribution of resources
- Products derived from federal, state, tribal, research/academic, and other sources
- Informed and vetted by regional experts, agencies, and stakeholders
- Functionality focuses on interactive mapping, contextual information, sharing, and data download



# Overview of Mid-Atlantic and Northeast Ocean Data Portals

## Ocean Resources and Conditions Data Themes

- Marine mammals & sea turtles
- Fish
- Birds
- Habitat & other marine life
- Oceanography
- Bathymetry
- Geology, sand & sediment
- Water quality

## Ocean Uses and Economics Data Themes

- Administrative & management areas
- Commercial fishing
- Aquaculture
- Energy
- Marine transportation & maritime
- National security
- Recreation
- Culture
- Socioeconomic

# Overview of Mid-Atlantic and Northeast Ocean Data Portals

## Portal uses

- Fishery management council alternatives
- USCG waterways management
- US Navy to ID areas for testing AUVs
- Offshore wind
- Energy and telecommunications cables
- Aquaculture siting/alternatives
- Dredge material disposal site designation
- Environmental assessments/NEPA
- State planning efforts and state portals throughout both regions
- Education & research

## Portal users

- State and federal agencies
- Tribes
- Municipalities
- Industry
- Project proponents/developers
- Consultants
- Stakeholder/public comment
- Universities
- K-12 Schools
- Aquariums

# Updating Commercial Fisheries Data on the Northeast and Mid-Atlantic Ocean Data Portals

## Fisheries Data Currently on the Portals

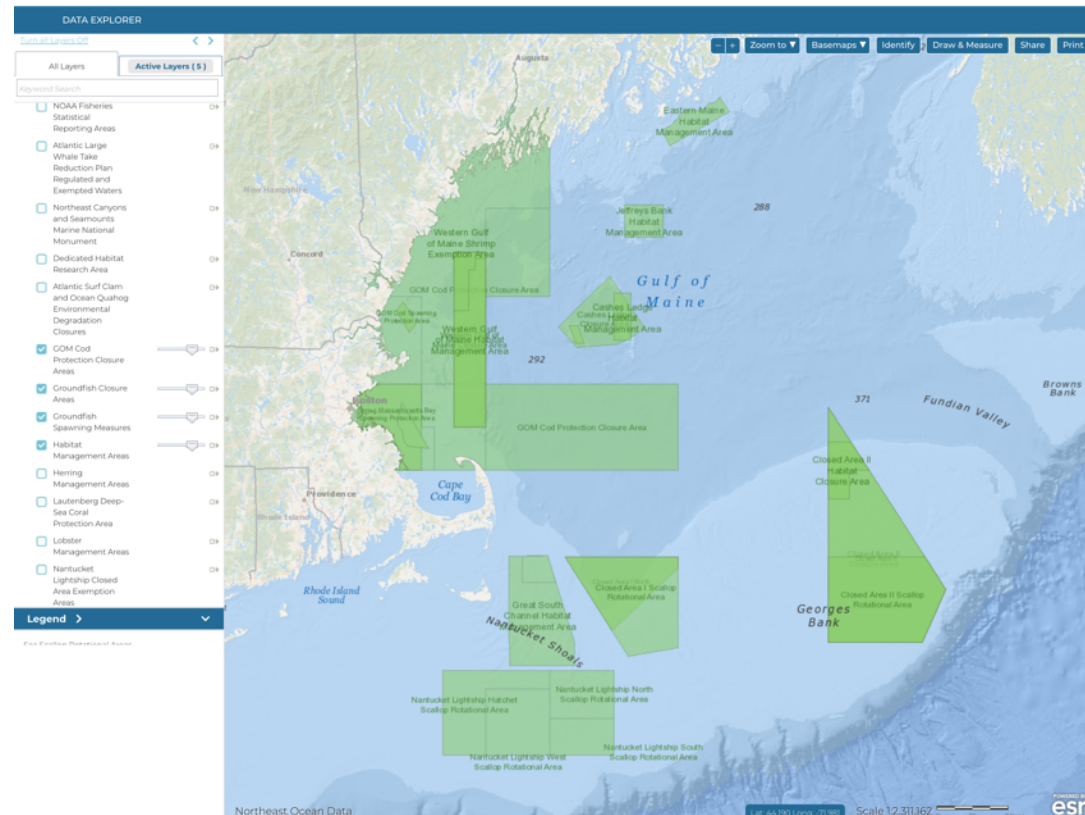
1. Fisheries Management Areas
2. VTR-based “Communities at Sea”
3. VMS-based fishing and transit
4. AIS-based transit

# Updating Commercial Fisheries Data on the Northeast and Mid-Atlantic Ocean Data Portals

## 1. Fisheries Management Areas



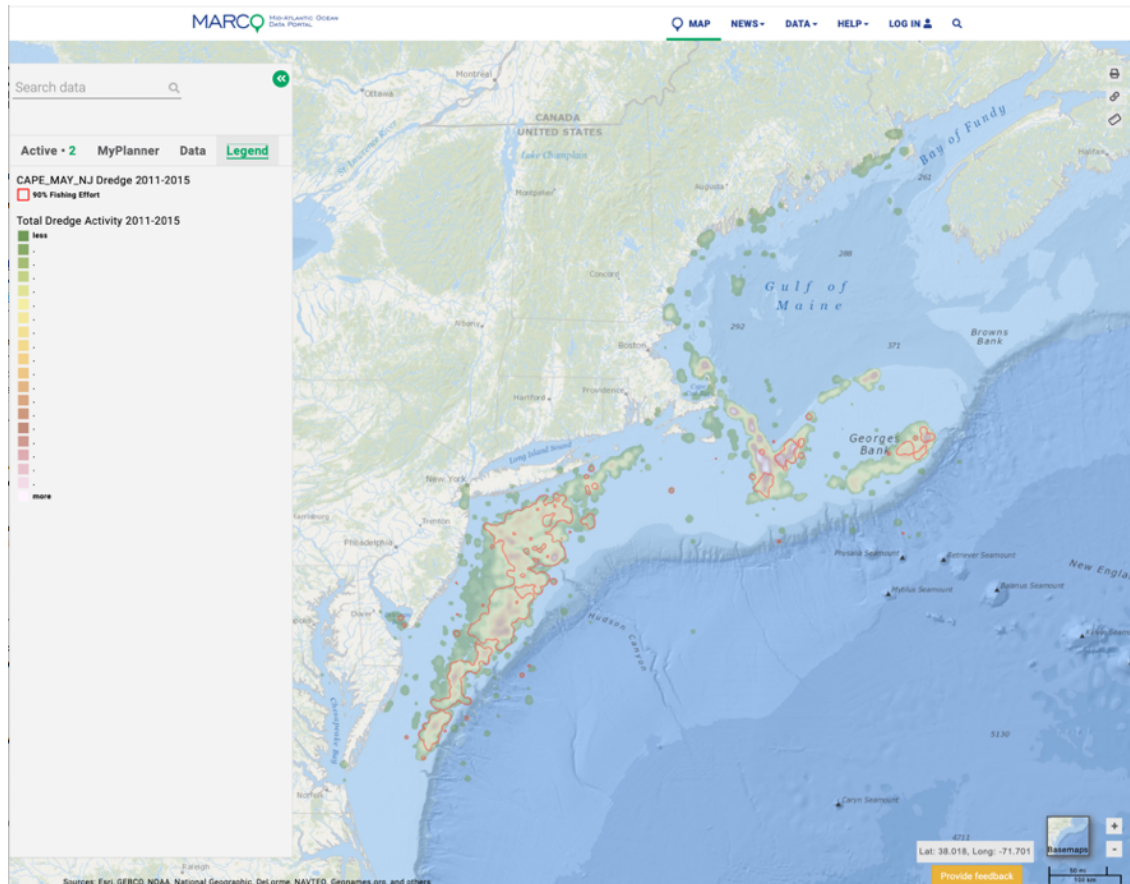
HOME ABOUT CASE STUDIES THEME MAPS DATA EXPLORER RESOURCES



- Current statistical reporting areas, closures, rotational areas, and habitat management areas
- From and updated by NMFS
- More detailed lobster management areas layers in development

# Updating Commercial Fisheries Data on the Northeast and Mid-Atlantic Ocean Data Portals

## 2. VTR-based “Communities at Sea”



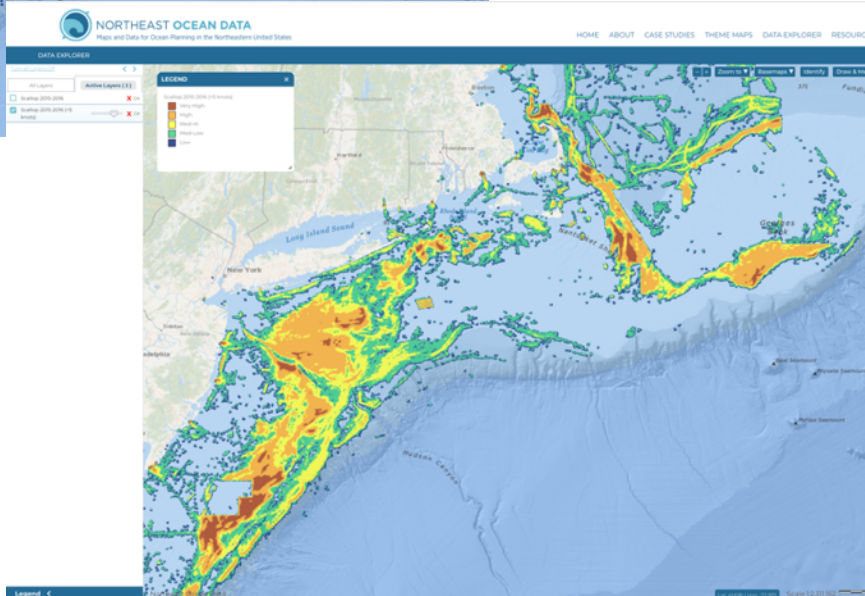
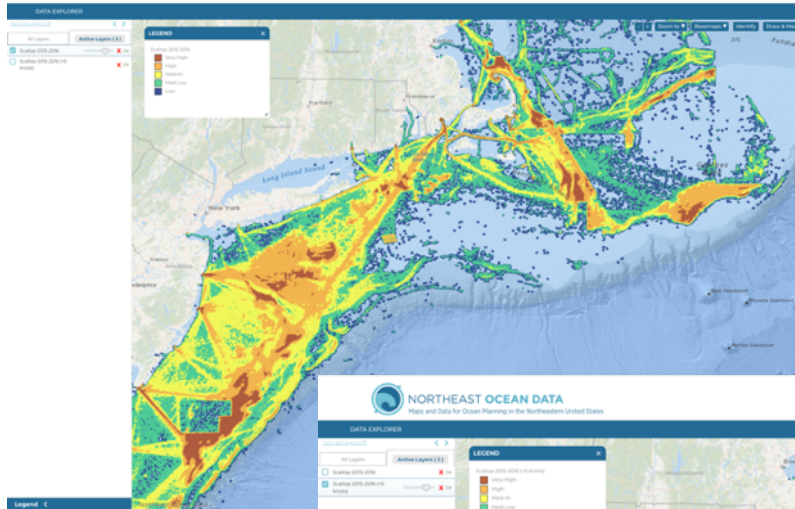
- 1996-2015
- Effort – days at sea
- By gear
  - Bottom trawl (< and > 65')
  - Dredge
  - Gillnet
  - Longline
  - Pots and traps
- Overall density map for 5-year time period
- Area where 90% of effort occurs by port/gear type

# Updating Commercial Fisheries Data on the Northeast and Mid-Atlantic Ocean Data Portals

## 3. VMS-based fishing and transit



HOME ABOUT CASE STUDIES THEME MAPS DATA EXPLORER RESOURCES

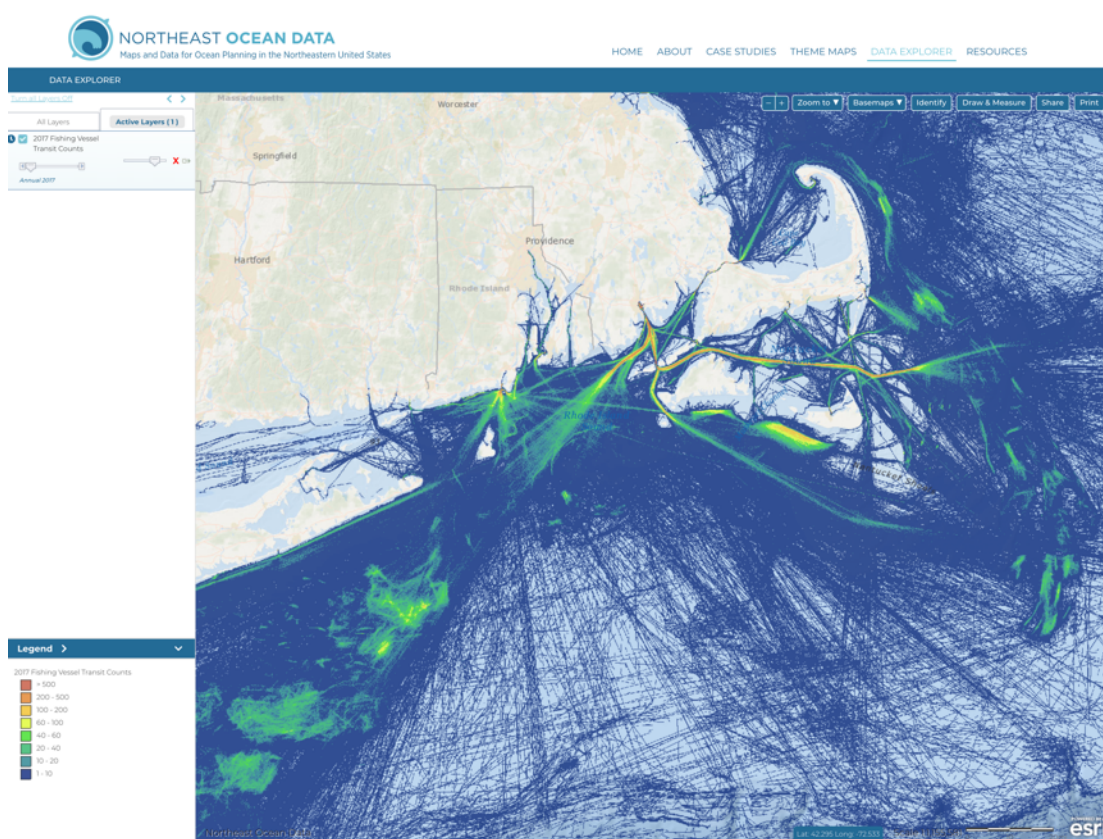


- 2006-2016 (depending on fishery)
- Separate maps for:
  - Northeast multispecies
  - Monkfish
  - Scallops
  - Surfclam/ocean quahog
  - Pelagics (herring, mackerel, and squid)
  - Herring
  - Squid
- All activity and activity over industry defined transit speed threshold



# Updating Commercial Fisheries Data on the Northeast and Mid-Atlantic Ocean Data Portals

## 4. AIS-based transit



- 2015-2017 on Portals
- 2018-2019 being added shortly
- Monthly data/patterns available via time slider
- Known limitations around AIS usage
- Not fishery or gear specific

# Updating Commercial Fisheries Data on the Northeast and Mid-Atlantic Ocean Data Portals

## Currently No Data For:

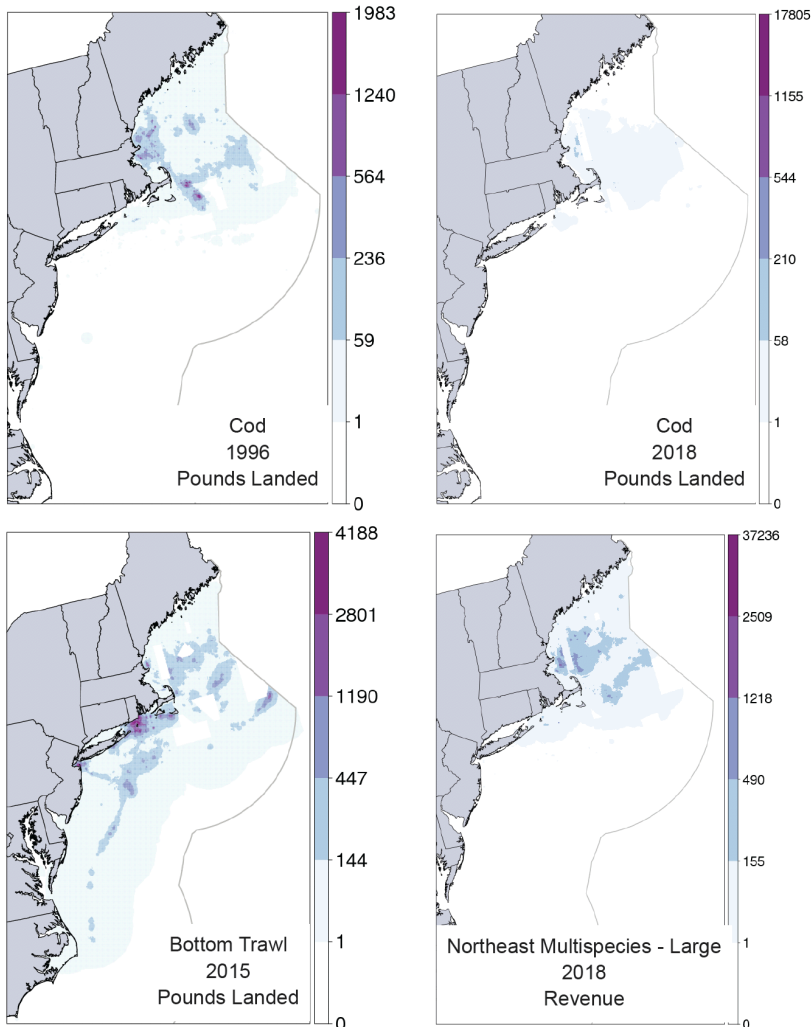
- Lobster (near term potential to integrate ME DMR and MA DMF data; also potential to use VTRs)
- Recreational fisheries (near term potential provide products for party and charter vessels from VTRs)

## Also, Considering Adding:

- Northeast Fisheries Science Center “Fishing Footprints”

# Updating Commercial Fisheries Data on the Northeast and Mid-Atlantic Ocean Data Portals

## NEFSC “Fishing Footprints”



- 1996-2018
- VTR-based
- Pounds landed; Revenue
- By species, gear, or FMP
- Potential for year aggregations

# Updating Commercial Fisheries Data on the Northeast and Mid-Atlantic Ocean Data Portals

## Project Partners:

- **Responsible Offshore Development Alliance (RODA)** – coalition of fishing industry associations and fishing companies with an interest in improving the compatibility of new offshore development with their businesses.
- **Northeast Regional Ocean Council (NROC)** - voluntary forum for states, federal agencies, and other regional organizations formed by the New England governors in 2005
- **Mid-Atlantic Regional Council on the Ocean (MARCO)** - state partnership to address shared regional priorities and provide a collective voice formed by the Governors of New York, New Jersey, Delaware, Maryland and Virginia in 2009

# Updating Commercial Fisheries Data on the Northeast and Mid-Atlantic Ocean Data Portals

## **Funding:**

Federal appropriation through NOAA to NROC and MARCO for regional data sharing for management decisions

## **Duration:**

January through September 2020

## **Project Outcomes:**

- Guidance for and updated maps on the NE and Mid-A portals with new years, additional products, and understanding of current and potential uses
- Upfront and consistent industry engagement on data product development and use via RODA convened focus groups

# Updating Commercial Fisheries Data on the Northeast and Mid-Atlantic Ocean Data Portals

## Industry's Role

- Provide feedback to RODA
  - Specific to your fishery and/or gear type
  - Attend any working group or other meeting where RODA is discussing the data portals, e.g. Council meetings or Council AP meetings
  - Contact Fiona ([Fiona@rodafisheries.org](mailto:Fiona@rodafisheries.org))

# Updating Commercial Fisheries Data on the Northeast and Mid-Atlantic Ocean Data Portals

- Which of the following is important to the fishery(s) you operate in?
  - Adding additional years to the fisheries data? If so, what years?
  - Add more fisheries, even if they are merged across fisheries?
  - Add other data sets that are more appropriate to show fishing spatial activity? (please list below?)
  - Change the speed used to identify vessels actively fishing (in VMS or AIS)?
  - Consider additional methods for identifying fishing and transit areas?
  - Consider other ways of aggregating existing data to show important operations to the fishery (e.g. seasonal, annual, multiple years, or some other time period)?
  - Add additional important management or regulatory spatial areas?
  - Add other maps that would show things that are important to your fishery?
  - Change how transiting vessels are identified?
  - Include non-map information to provide better context to spatial depictions?
  - Other?