

Golden Tilefish



SSC Meeting
July 21, 2021

Outline

- Meeting Objective
- Regulatory Review
- Stock Status
- Recent Fishery Performance
 - 2021 Fishery Information Document
 - 2021 Fishery Performance Report
- Staff Recommendation

Meeting Objectives

- Recommend ABCs for up to 3 years (2022-2024)
 - Review and Revise 2022 interim ABC
 - Developed ABCs for 2023 and 2024
 - Factors influencing recent catch and landings
 - Management track assessment results
 - ABC projection results

Regulatory Review

- In 2020 catch and landings limits we set for 2021 and 2022 (interim)
- 1st year of a 2-year specifications cycle
- Interim specifications were set:
 - Potential timing constraints with the 2021 MTA
 - Administrative efficiency

Regulatory Review

- In March 2020, the SSC was asked to set ABCs for two years
 - *Status Quo* level ABC for 2021-2022
 - 1,635,830 pounds or 742 mt

Regulatory Review

- Concerns about using 2017 model results
- Textbook definition of equilibrium fishery
 - Stable: catches, prices, and seasonal supply
 - Low discard levels
- No significant changes in the fishery
- CPUE increasing
- 2021 MTA will be used to review 2022 interim value

Current Specifications

	2021 (initial values)*	2021 IFQ TAL w/ Max Carryover**	2022 (interim)	Basis
ABC	1.636 m lb (742 mt)	–	1.636 m lb (742 mt)	SSC recommendation, based on data update, recent fishing trends, and scheduled 2021 management track assessment update that will be used to revise 2022 interim specifications
ACL	1.636 m lb (742 mt)	–	1.636 m lb (742 mt)	ABC = ACL
Management Uncertainty	0	–	0	Derived by Monitoring Committee (MC)
IFQ ACT	1.554 m lb (705 mt)	–	1.554 m lb (705 mt)	95% ACL
Incidental ACT	0.082 m lb (37 mt)	–	0.082 m lb (37 mt)	5% ACL
IFQ Discards	0	–	0	Discards in the IFQ fishery are prohibited
Incidental Discards	0.011 m lb (5 mt)	–	0.011 m lb (5 mt)	Avg. discard (2015-2019) mostly sm/lg mesh OT and Gillnet gear. NEFSC
IFQ TAL	1.554 m lb (705 mt)	1.631 m lb (740 mt)	1.554 m lb (705 mt)	IFQ ACT - IFQ Discards
Incidental TAL	0.070 m lb (32 mt)	–	0.070 m lb (32 mt)	Incidental ACT - Incidental Discards

Stock Status; 2021 MTA

- The Golden tilefish stock was not overfished, and overfishing was not occurring in 2020
 - Fishing mortality in 2020 was estimated at $F=0.160$; 39% below the fishing mortality threshold of $F=0.261$ (F_{MSY} proxy = $F_{40\%}$)
 - SSB in 2020 was estimated at 23.28 million pounds (10,562 mt), and was at 96% of the biomass target (SSB_{MSY} proxy = $SSB_{40\%}$)

2021 MTA

- CPUE continues to increase
- Broad distribution of fish landed
- Above average year class for 2017 (2.1 million fish)

2021 MTA

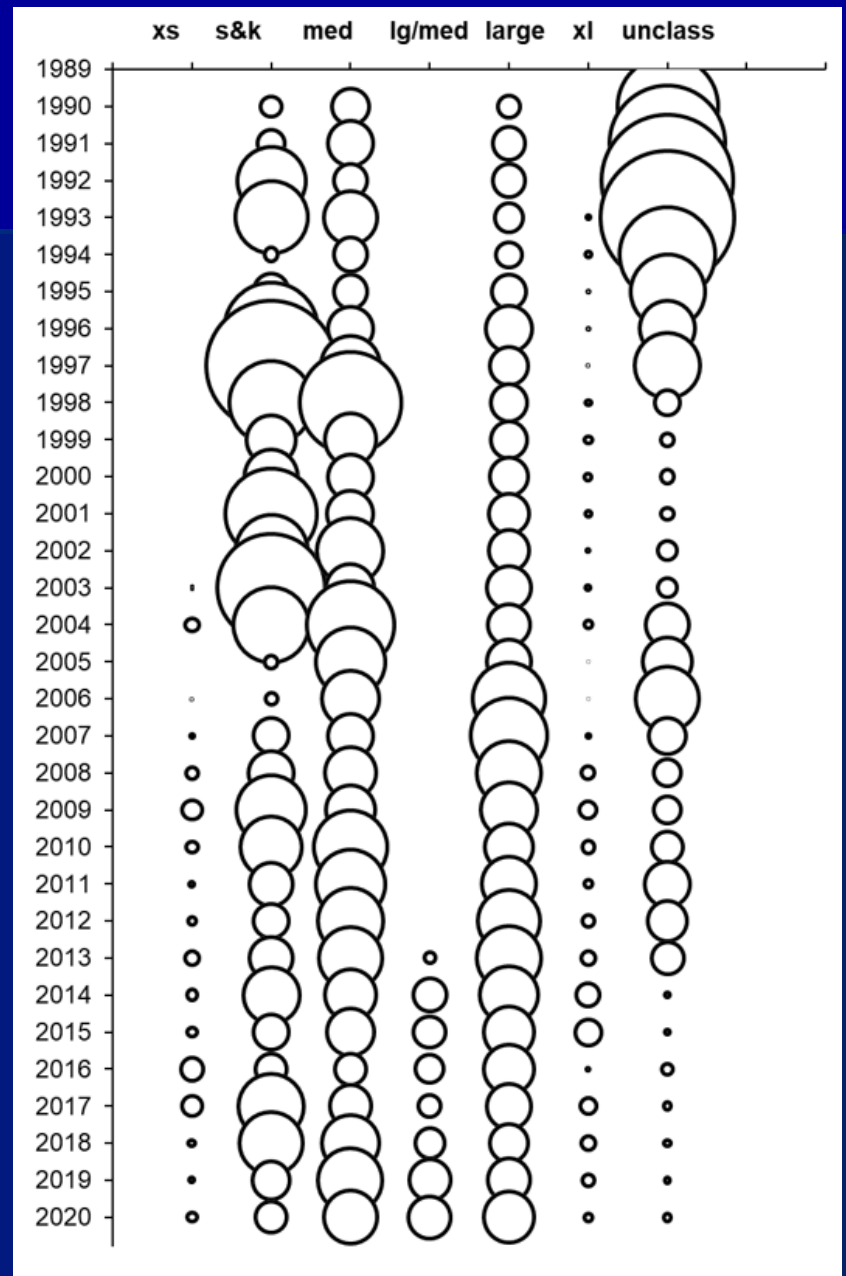
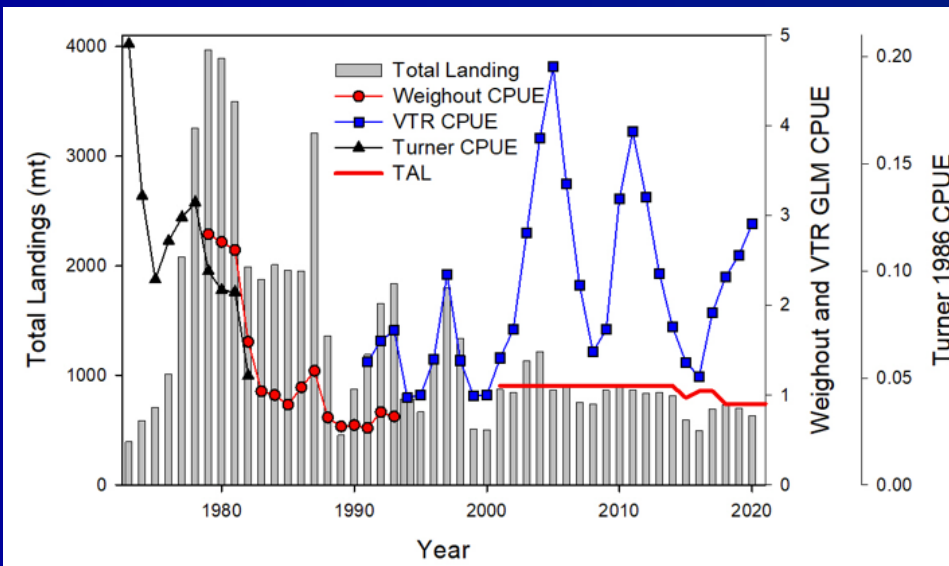


Table 1 (Abbreviated). Summary of management measures and landings for FY 2010 through 2020.

Management Measures	2009	2010	2011	2012	2013	2014	2015	2016	2017	2018	2019	2020	2021	2022
ABC (m lb)	-	-	-	-	2.013	2.013	1.766	1.898	1.898	1.636	1.636	1.636	1.636	1.636
TAL (m lb)	1.995	1.995	1.995	1.995	1.995	1.995	1.755	1.887	1.887	1.626	1.626	1.626	1.625	1.625
Com. quota- (m lb)	1.995	1.995	1.995	1.995	1.995	1.995	1.755	1.887	1.887	1.626	1.626	1.626	1.625/ 1.701*	1.625
Com. landings (m lb)	1.887	1.997	1.946	1.856	1.839	1.830	1.354	1.060	1.487	1.626	1.563	1.403	-	-
Com. Overage / underage (m lb)	-0.108	+0.002	-0.049	-0.139	-0.156	-0.165	-0.401	-0.827	-0.401	<-0.001	-0.064	-0.223	-	-
Incidental trip limit (lb)	300	300	300	500	500	500	500	500	500	500	500	500	500	500
Rec. possession limit	-	8 ^b	8 ^b	8 ^b	8 ^b	8 ^b	8 ^b	8 ^b	8 ^b	8 ^b	8 ^b	8 ^b	8 ^b	8 ^b

Table 1 (Abbreviated). Summary of management measures and landings for FY 2010 through 2020.

Management Measures	2009	2010	2011	2012	2013	2014	2015	2016	2017	2018	2019	2020	2021	2022
ABC (m lb)	-	-	-	-	2.013	2.013	1.766	1.898	1.898	1.636	1.636	1.636	1.636	1.636
TAL (m lb)	1.995	1.995	1.995	1.995	1.995	1.995	1.755	1.887	1.887	1.626	1.626	1.626	1.625	1.625
Com. quota- (m lb)	1.995	1.995	1.995	1.995	1.995	1.995	1.755	1.887	1.887	1.626	1.626	1.626	1.625/ 1.701*	1.625
Com. landings (m lb)	1.887	1.997	1.946	1.856	1.839	1.830	1.354	1.060	1.487	1.626	1.563	1.403	-	-
Com. Overage / underage (m lb)	-0.108	+0.002	-0.049	-0.139	-0.156	-0.165	-0.401	-0.827	-0.401	<-0.001	-0.064	-0.223	-	-
Incidental trip limit (lb)	300	300	300	500	500	500	500	500	500	500	500	500	500	500
Rec. possession limit	-	8 ^b	8 ^b	8 ^b	8 ^b	8 ^b	8 ^b	8 ^b	8 ^b	8 ^b	8 ^b	8 ^b	8 ^b	8 ^b

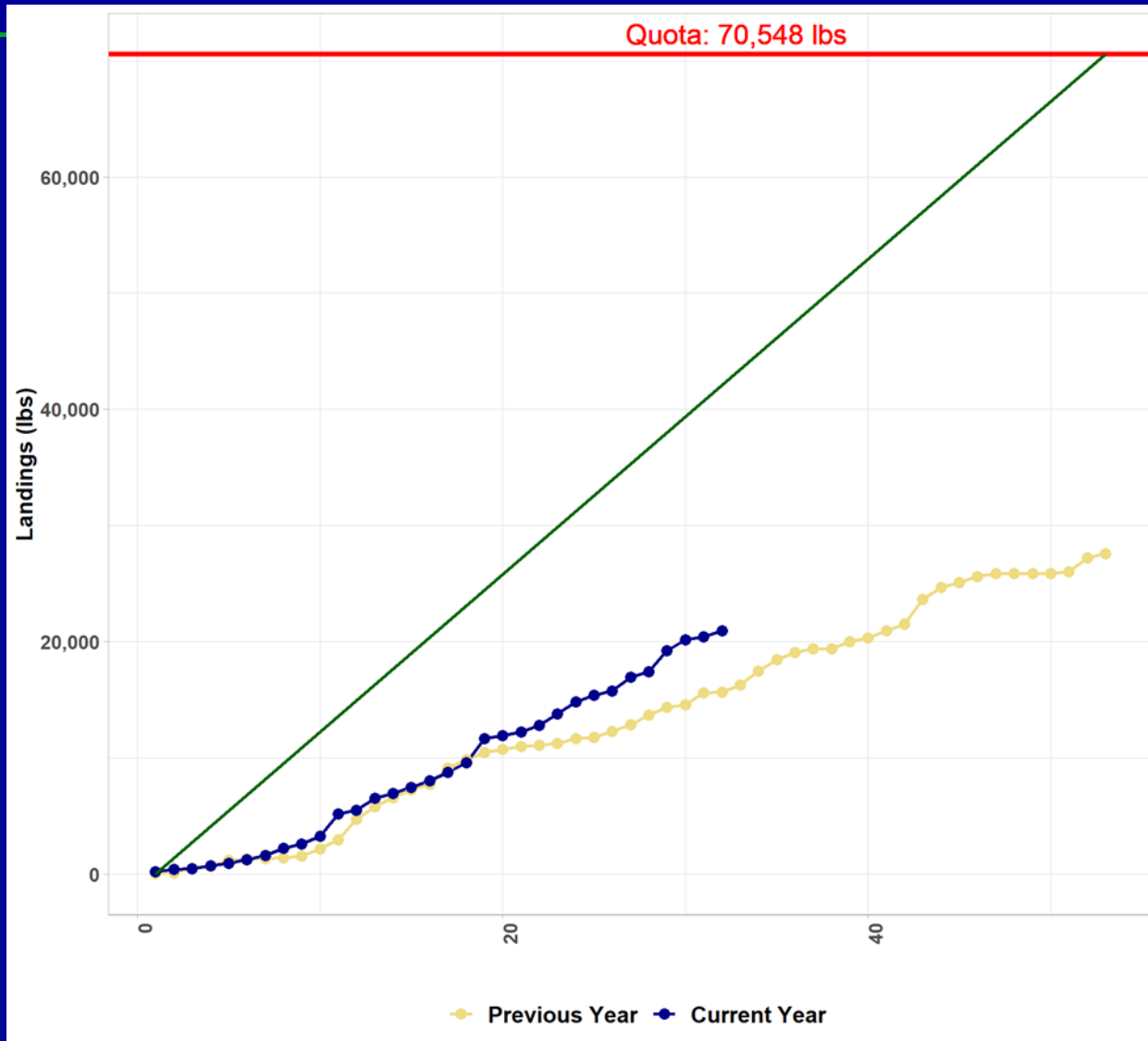
Commercial Landings

- Tilefish are primarily caught by longline (97%) and bottom otter trawl (2%) for the 2016-2020 period (Table 2)
- Statistical areas 616 (47%), 537 (37%), 539 (5%), and 526 (3%; Table 3)
 - Accounting for 92% of the tilefish landings in 2020

Landings, ex-vessel value, and price/lb

- 2020 landings – 1.28 million pounds (9% decrease from 2019)
 - 1.41 million pounds in 2019
- 2020 ex-vessel revenue – \$4.81 million (11% decrease from 2019)
 - \$5.37 million in 2019
- 2020 mean price per pound – \$3.75 (2% decrease from 2019)
 - \$3.81/lb in 2019

Incidental Landings



Incidental Landings

Fishing year	Landings (pounds)	Incidental quota (pounds)	Percent of quota landed (%)
2013	36,442	99,750	37
2014	44,594	99,750	45
2015	18,839	87,744	21
2016	20,929	94,357	22
2017	60,409	94,357	64
2018	61,254	72,752	84
2019	22,246	72,752	31
2020	25,864	70,548*	37*

Catch Disposition / Discard Trends

- No commercial discards of golden tilefish in directed tilefish trips
- Typically, none to very little discarding reported in longline vessels targeting GTF (VTR)
- Commercial discards are negligible in non-directed trips (Assessment)

Discard Trends

- According to the “Discard Estimation, Precision, and Sample Size Analysis” conducted by the NEFSC, discard estimations for commercial fisheries are low (mostly large/small mesh trawls and gillnets)
 - 2014-2018 – avg. 11,627 pounds (~5 mt)
 - 2015-2019 – avg. 11,524 pounds (~5 mt)
 - 2016-2020 – avg. 17,405 pounds (~8 mt)

Dealers

- In 2020 - 50 dealers - \$4.81 million – 105 vessels
- In 2019 - 54 dealers - \$5.37 million – 106 vessels
- Dealers are mostly located in NY, RI, NJ, MA, and CT (Table 9)

Year	Landed no. A and B1				Released no. B2			
	Party/charter		Private/rental		Party/charter		Private/rental	
1982	0		2,225	(102.0)	0		0	
1983	0		0		0		0	
1984	0		0		0		0	
1985	0		0		0		0	
1986	0		0		0		0	
1987	0		0		0		0	
1988	0		0		0		0	
1989	0		0		0		0	
1990	0		0		0		0	
1991	0		0		0		0	
1992	0		0		0		0	
1993	0		0		0		0	
1994	555	(101.6)	0		0		0	
1995	0		0		0		0	
1996	1,765	(80.5)	0		0		0	
1997	0		0		0		0	
1998	0		0		0		0	
1999	0		0		0		0	
2000	0		0		0		0	
2001	98	(101.4)	0		0		0	
2002	0		122,443	(85.7)	0		8,163	(85.7)
2003	967	(75.2)	0		0		0	
2004	55	(102.2)	0		0		0	
2005	0		0		0		0	
2006	471	(103.7)	0		0		0	
2007	1,837	(71.4)	0		0		0	
2008	0		0		0		0	
2009	168	(89.8)	0		0		0	
2010	4,754	(81.9)	213,382	(98.4)	0		0	
2011	0		0		0		0	
2012	0		0		0		0	
2013	1,145	(0)	0		0		0	
2014	0		0		0		0	
2015	0		0		0		0	
2016	0		26,691	(70.4)	0		0	
2017	0		59,413	(59.4)	0		0	
2018	7,925	(80.3)	893	(102.9)	4	(106.8)	0	
2019	0		10,503	(64.4)	0		0	
2020	0		0		0		0	

**Table 13.
Recreational
tilefish data
from the
NMFS
recreational
statistics
databases,
1982-2020.**

Year	Party/Charter		Private ^a	
	Number of golden tilefish kept	Mean effort	Number of golden tilefish kept	Mean effort
1996	81	1.4	---	---
1997	400	7.5	---	---
1998	243	8.1	---	---
1999	91	0.4	---	---
2000	147	0.5	---	---
2001	172	0.7	---	---
2002	774	0.9	---	---
2003	991	1.6	---	---
2004	737	1.2	---	---
2005	498	0.9	---	---
2006	477	1.2	---	---
2007	1,077	1.2	---	---
2008	1,100	1.3	---	---
2009	1,451	1.3	---	---
2010	1,866	2.0	---	---
2011	2,938	3.4	---	---
2012	6,424	2.8	---	---
2013	6,560	3.2	---	---
2014	6,958	3.1	---	---
2015	8,297	4.2	---	---
2016	5,919	4.1	---	---
2017	7,014	4.6	---	---
2018	7,110	3.9	---	---
2019	5,424	3.1	---	---
2020	3,466	3.2	50	5.0
All	70,215*	2.8	50	5.0

**Table 14.
Number of
tilefish kept by
recreational
anglers and
mean effort
from ME
through VA,
1996-2020,
VTR data.**

Recreational Fishery

- Private Recreational Angler Permitting and Reporting
 - Mandatory in August 2020
 - Permit allows rec anglers to land GTF & BLT

- In 2020 (Aug to Dec)
 - 50 fish were landed
 - 5 fish were discarded

Fishery Performance Report

- Advisors met February 17, 2021
- Asked series of trigger questions
- AP identified several “Critical Issues”
- Also note, advisors have consistently indicated like to see *status quo* quotas from year-to-year
 - quota stability = fishery/market stability

Fishery Performance Report

■ COVID-19

- Reduction in demand/restaurant closures
- Spreading landings to avoid market gluts
- Large price reduction beginning on pandemic
- Prices are now relatively stable
- For-hire effort was reduced in 2020, experiencing the same in 2021

Fishery Performance Report

■ CPUE

- Increasing, more fish caught w/ same trip effort compared to 2019
- Larger amount/proportion of s&k (2-3.5 lb) in 2020 compared to previous years
- s&k trend continued in 2021

■ Recreational

- 2020 tuna season was good = less boats targeting tilefish

Fishery Performance Report

- Support development of the multi-year specifications framework
 - Timing of the fishing year
 - January 1 to December 31 (vs November 1 to October 31)
 - Duration for setting multi-year specifications
 - Coincide with Northeast Regional Coordinating Council assessment schedule

Fishery Performance Report

■ Other issues

- Concern about lack of biological sampling of landings on the dock
- Would like to have more input when future longline surveys are designed
 - Captains input regarding where to fish/sample

Staff Recommendations

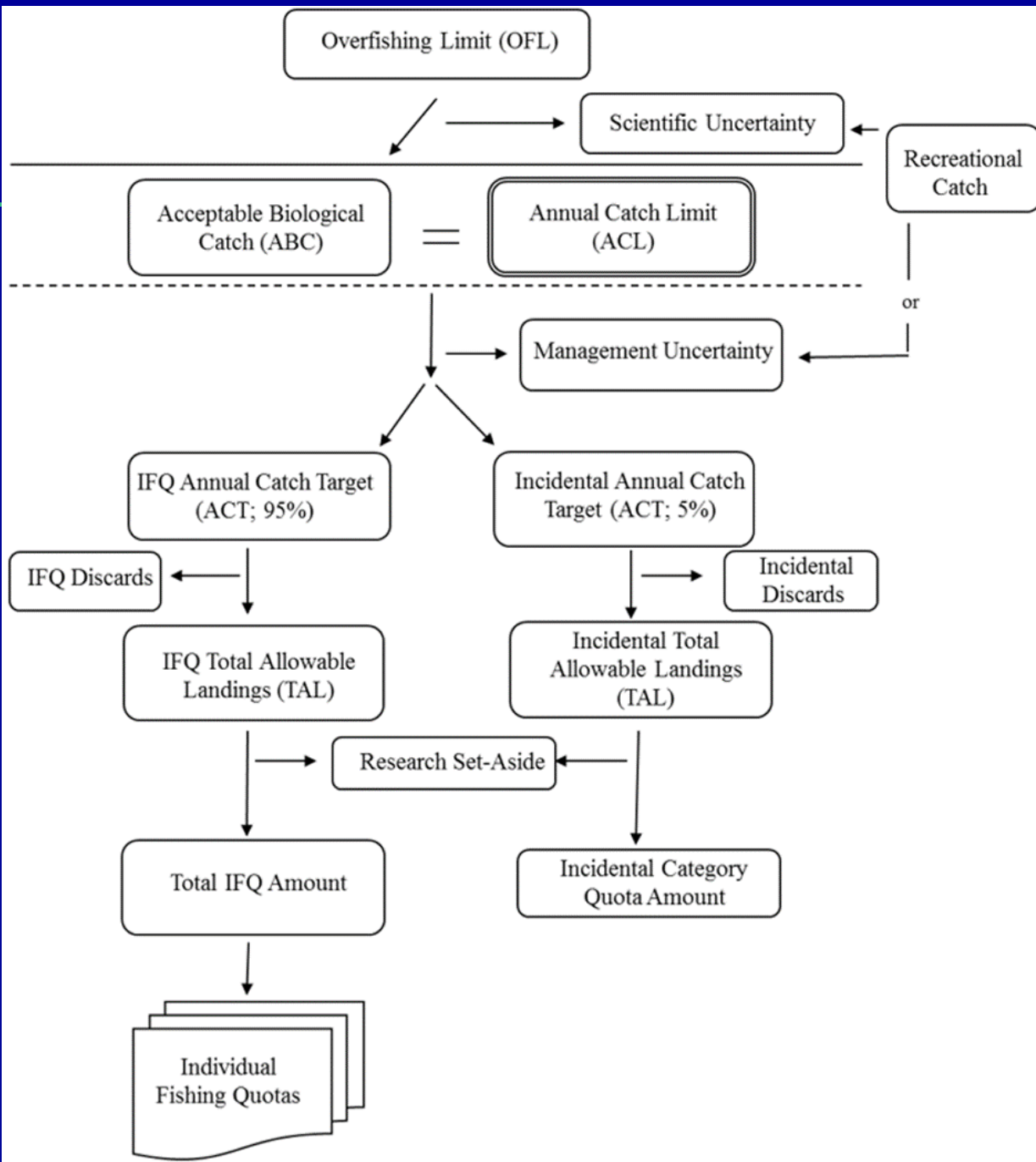
- Memo to Chris Moore
- Set constant average ABCs for 2022, 2023, 2024
- 1,964,319 pounds or 891 mt (scenario 2)

Staff Recommendations

- 1,964,319 pounds or 891 mt (scenario 2)
 - Based on a modified OFL probability distribution with CV of 100% and Council risk policy for constant average ABC
 - Current stock status
 - Average projected SSB/SSBMSY=102% for 2022-2024
 - Constant year-to-year quota = stability in the fishery/markets

Staff Recommendations

Year	OFL	ABC	ABC % of OFL
2022	2,228,873 (1,011 mt)	1,964,319 (891 mt)	88%
2023	2,226,669 (1,010 mt)	1,964,319 (891 mt)	88%
2024	2,151,712 (976 mt)	1,964,319 (891 mt)	91%



Tilefish Flow Chart for Catch and Landings Limits

Multi-Year Specifications Framework

- Timing of the fishing year
- Council selected preferred alternative
 - January 1 to December 31
- One-time adjustment only – gap fishing year
- 2022 FY will extend from November 1, 2021 to December 31, 2022
- 2023/2024 FYs = January 1 to December 31

Multi-Year Specifications Framework

- Resulting 2022 overall quota is 20% higher compared to 2021
- However, on a common monthly denominator basis it is only 3% higher (due to gap year effect)
- 2021, 135,359 lb (1,624,305 lb/12 months)
- 2022, 139,065 lb (1,946,914 lb/14 months)

Discussion, Questions?



Staff Recommendations

	2022 (revised)	2023	2024	Basis
OFL	2,228,873 (1,011 mt)	2,226,669 (1,010 mt)	2,151,712 (976 mt)	Projections
ABC	1,964,319 (891 mt)	1,964,319 (891 mt)	1,964,319 (891 mt)	Staff recommendation based on overfishing probability averaging
ACL	1,964,319 (891 mt)	1,964,319 (891 mt)	1,964,319 (891 mt)	ABC = ACL
IFQ fishery ACT	1,866,103 (846 mt)	1,866,103 (846 mt)	1,866,103 (846 mt)	Deduction from management uncertainty = 0. ACT = 95% of the ACL
Incidental fishery ACT	98,216 (45 mt)	98,216 (45 mt)	98,216 (45 mt)	Deduction from management uncertainty = 0. ACT = 5% of the ACL
Projected IFQ fishery discards	0	0	0	Data indicates no discards in the IFQ fishery (directed fishery). IFQ fishery discards are prohibited in the FMP
Projected incidental fishery discards	17,405 (8 mt)	17,405 (8 mt)	17,405 (8 mt)	Average discards (2016-2020) mostly sm/lg mesh OT and Gillnet gear
IFQ fishery TAL = IFQ fishery quota	1,866,103 (846.450 mt)	1,866,103 (846.450 mt)	1,866,103 (846.450 mt)	IFQ fishery TAL = IFQ fishery ACT – IFQ fishery discards. No additional reductions applied between IFQ TAL amounts and final IFQ fishery quota amounts.
Incidental fishery TAL = incidental fishery quota	80,811 (36.665 mt)	80,811 (36.655 mt)	80,811 (36.655 mt)	Incidental fishery TAL = incidental fishery ACT – incidental fishery discards. No additional reductions applied between incidental TAL amounts and final incidental fishery quota amounts.