



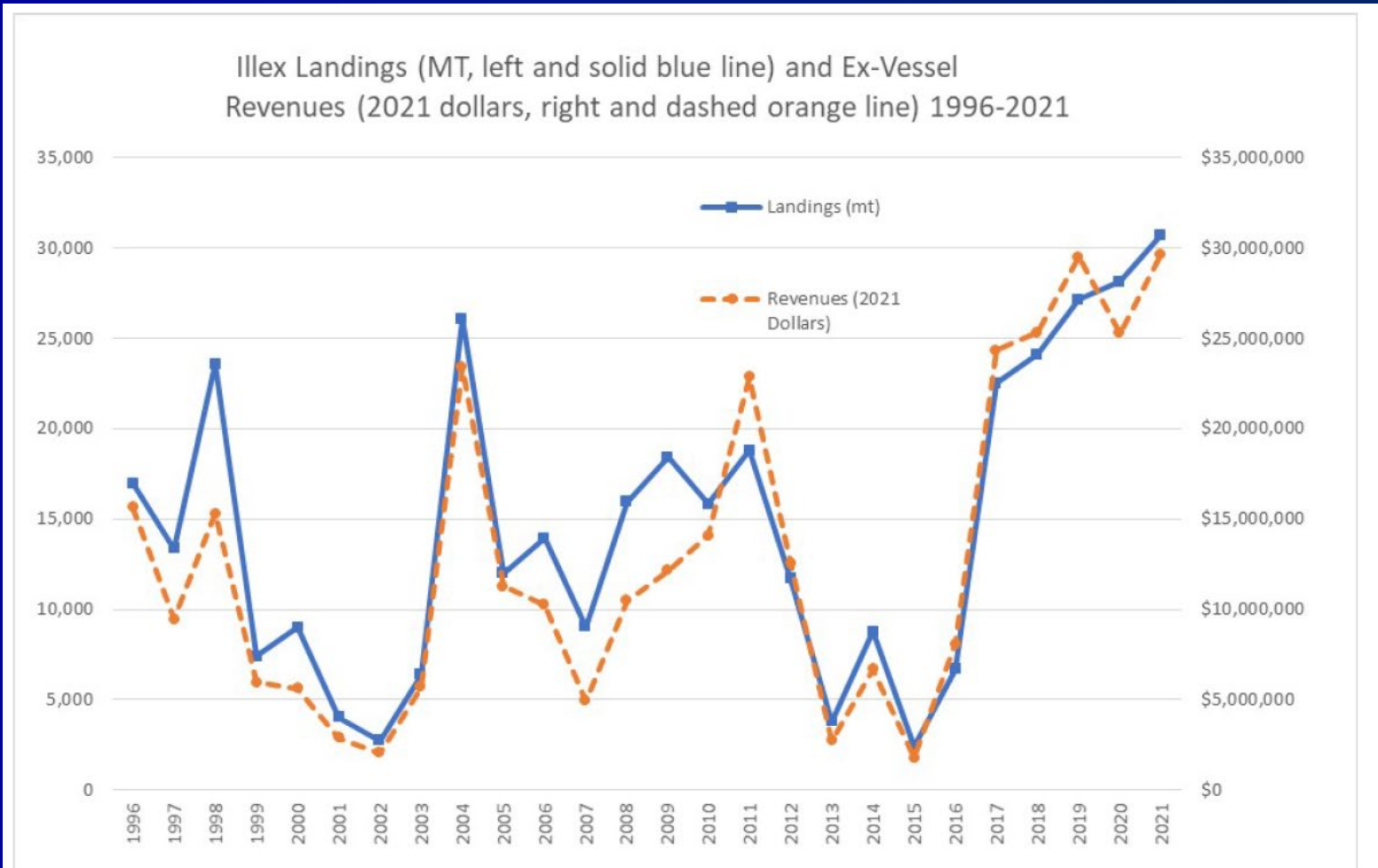
# ***Illex* 2023 Preliminary ABC**

*July 2022*

# *Illex* 2022 Current/review

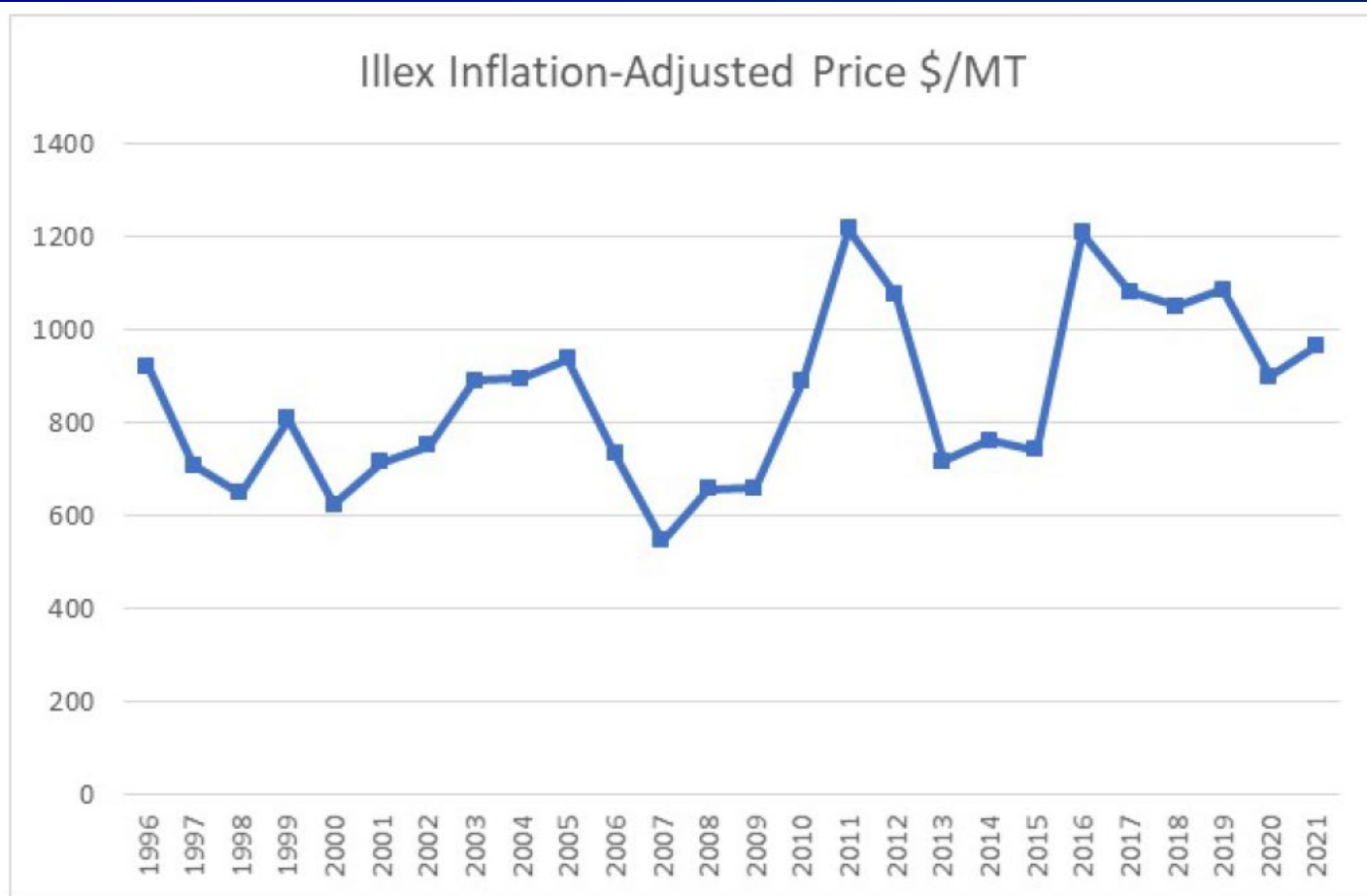
- 40,000 MT ABC
- Based on SSC March 2022 Advice
  - Indirect (Rago) Analyses
  - “a low risk of overfishing”
  - “not...beyond...lack a clear link between escapement, F:M and the risk of overfishing...”

# From Fishery Info Doc



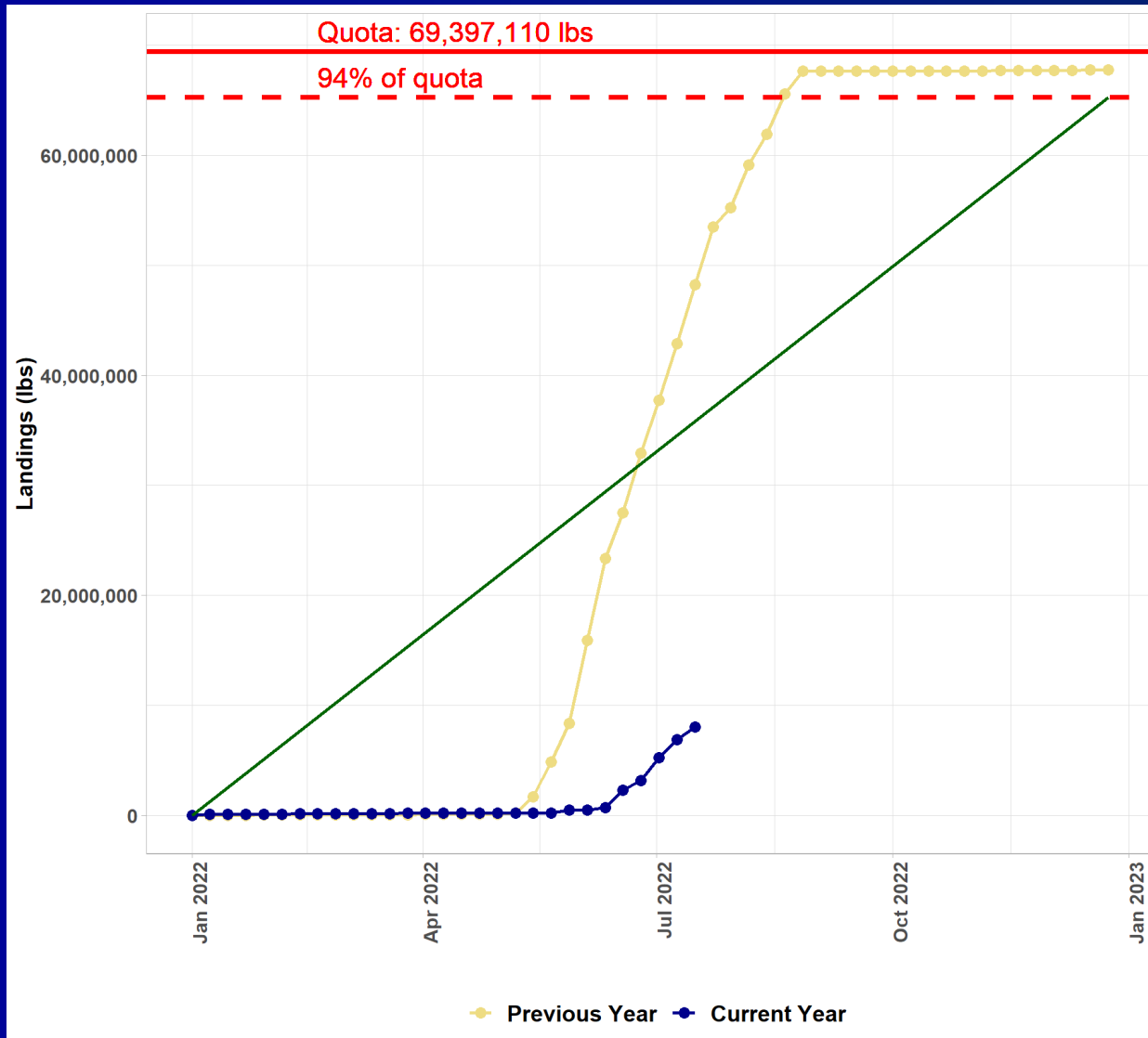
**Figure 2.** U.S. *Illex* Landings and Ex-Vessel Values 1996-2021. Source: NMFS unpublished dealer data.

# From Fishery Info Doc



**Figure 3.** Ex-Vessel *Illex* Prices 1996-2021 Adjusted to 2021 Dollars Source: NMFS unpublished dealer data.

# Updated 2022 *Illex* Landings



# Fishery Performance Report

- Market conditions/prices similar in 2021 as 2020 - “stable”
- +7% price increase = +3 cents/pound
- world market dominates price - U.S. landings are a small component
- FAO has 2019 Argentine shortfin squid =  
~ 250,000 MT
  - Chinese catch annotated with an “E”

# Fishery Performance Report

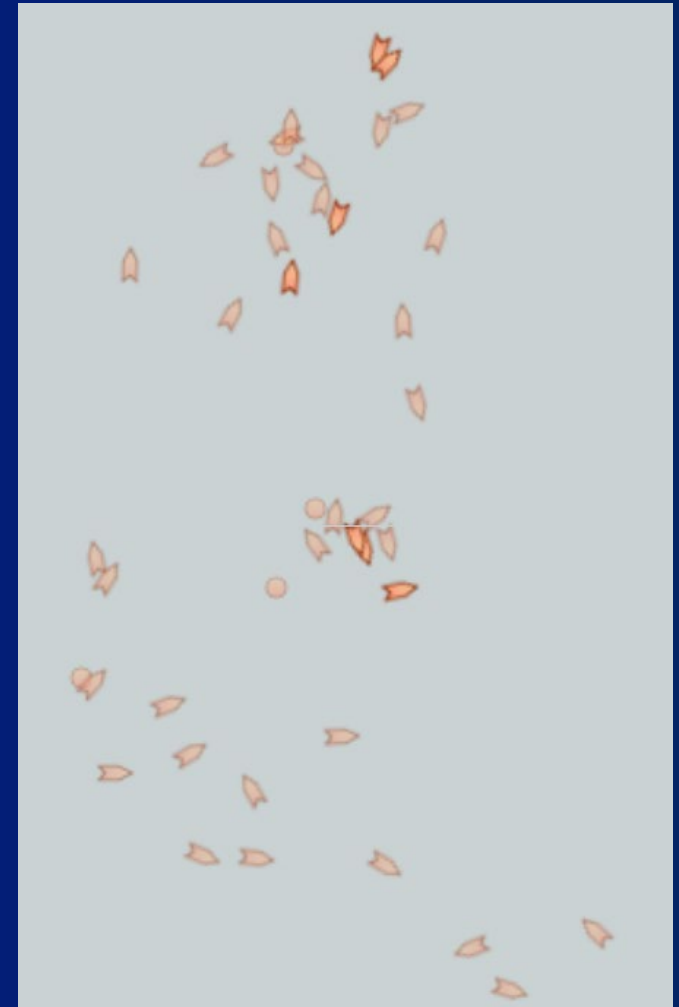
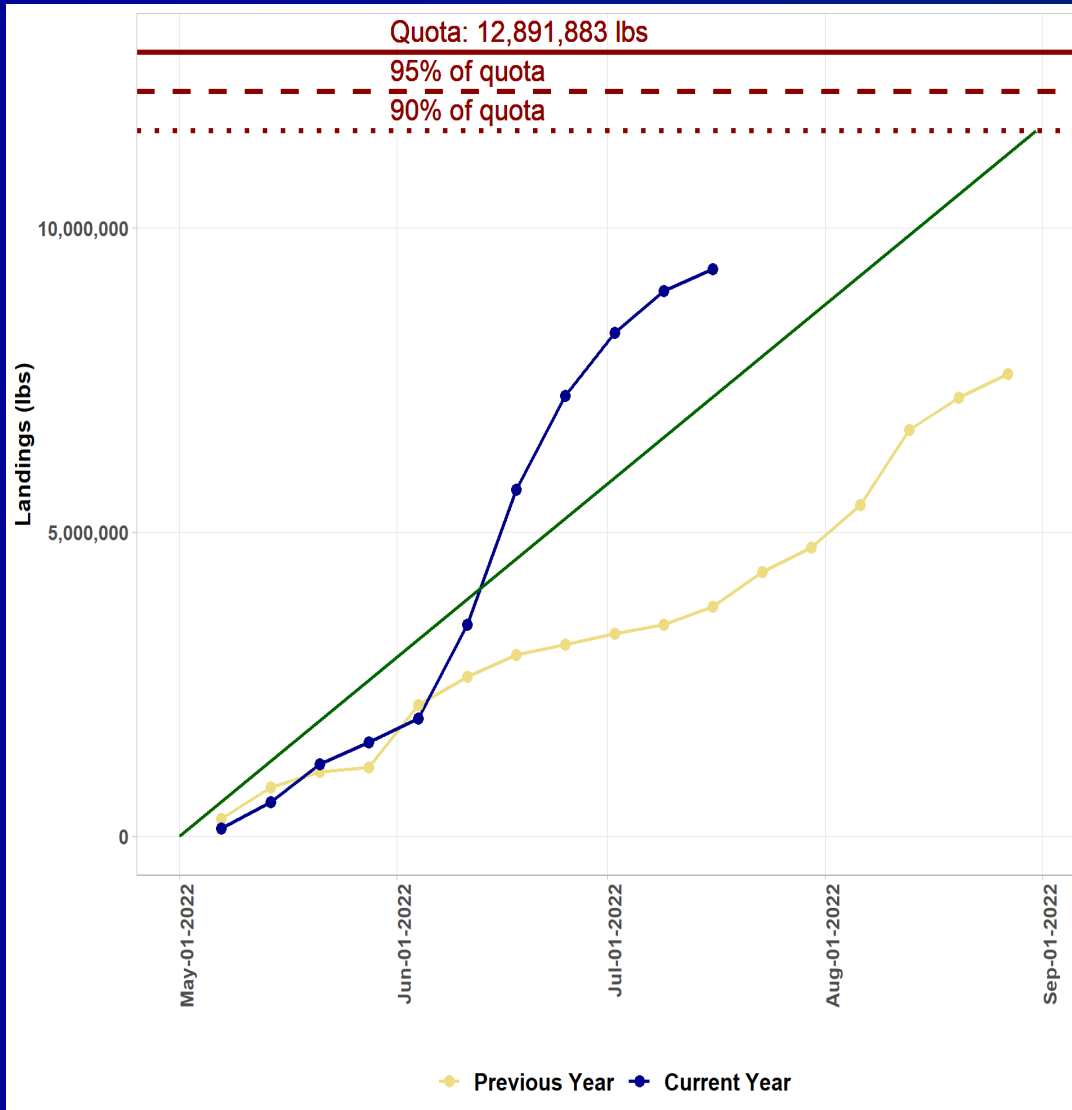
- Continue to involve fishermen in work to understand environmental linkages
- Opposing perspectives RE: how/whether SSC/Council should consider role of *Illex* in the food web as related to the strategic plan and Ecosystem Approaches to Fishery Management Guidance Document

# Fishery Performance Report Supplement

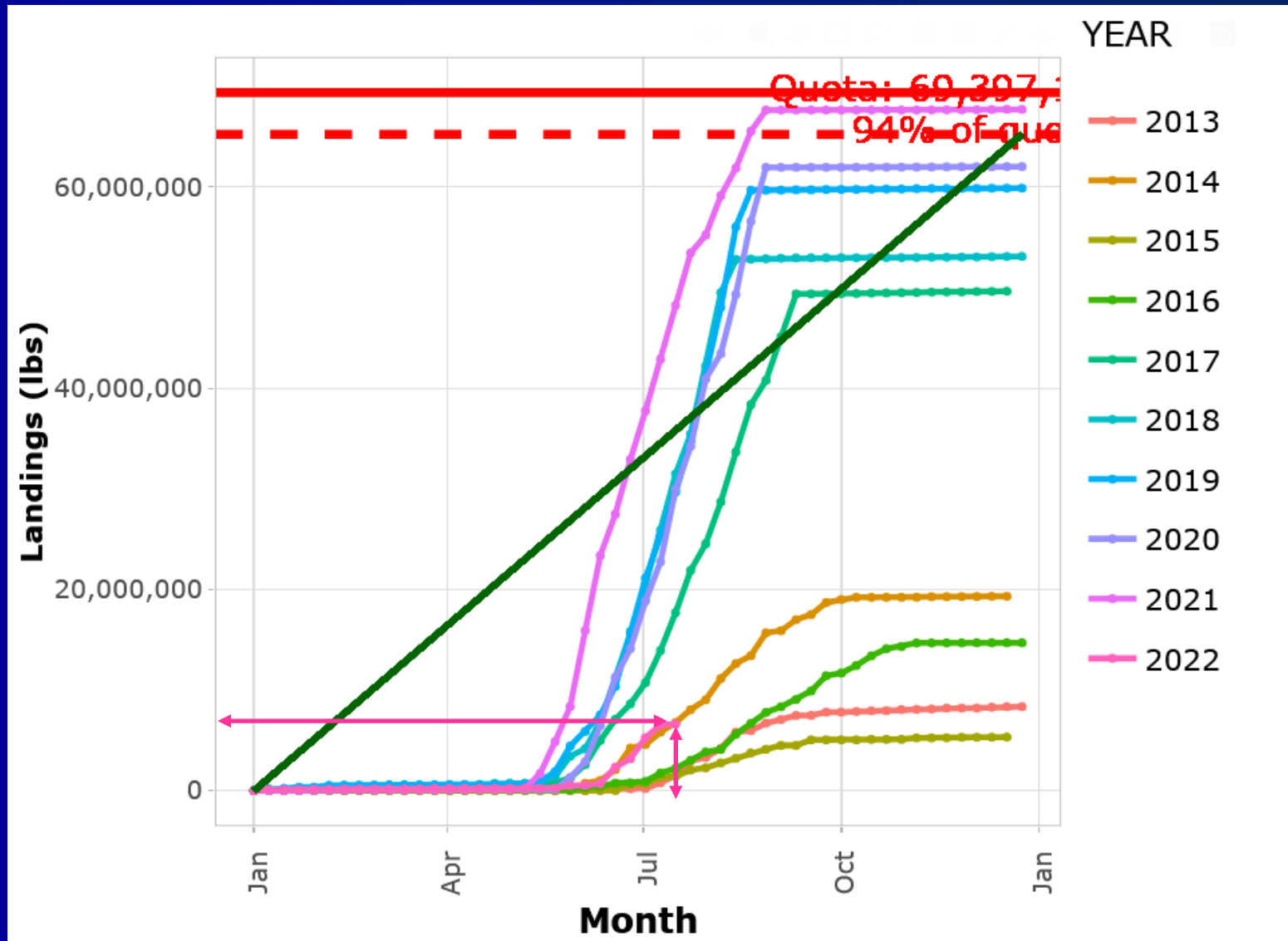
- Lower 2022 *Illex* landings are result of good longfin fishing and high fuel prices
- Lower early summer water temperatures and lack of warm core rings
- *Illex* ABC low versus skates
  - 47,000 MT quota more reasonable



# Updated 2022 Longfin T2 Landings



# 2022 In Long Term Context



# Research Track Assessment Review

- “plausible scenarios...dominated by those in which fishing mortality was low relative to natural mortality...consistent across years with low, medium, and high fishery performance.”
- “...working group concluded...stock was lightly fished in 2019. The Panel agreed that this was likely to be the case...”

# Staff ABC Recommendation

- Stay at 40,000 MT for now
- Since the assessment failed, NEFSC will take over updating the work that Paul has been doing.
- Re-evaluate in March after updates with 2022 data.