



***Spiny Dogfish***  
***2022 ABC***

*September 2021*

# Current 2021-2022 Specs

17,498 metric tons (mt)

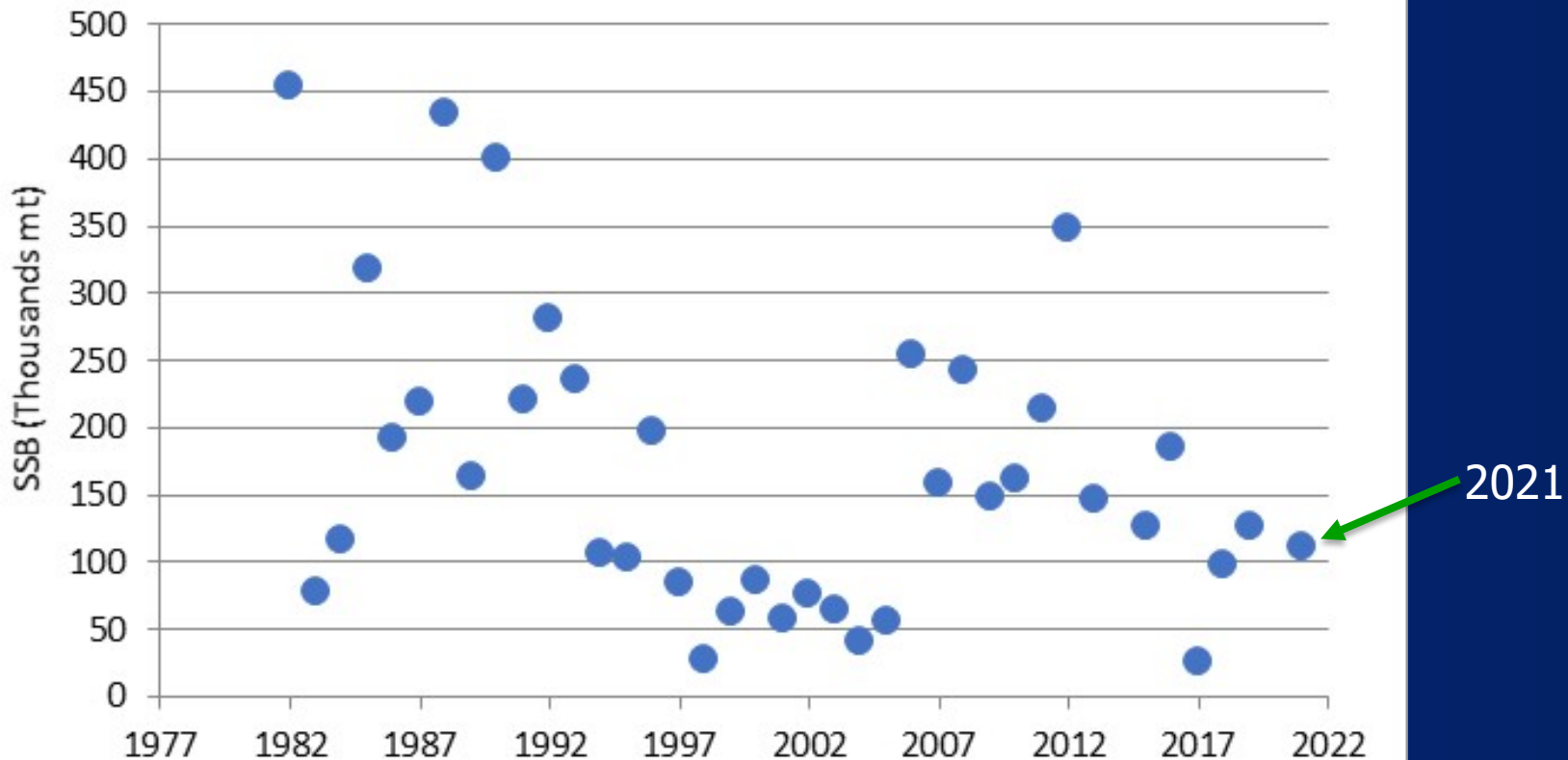
The revised  $P^*$  for 2021 was 0.333

Extended ABC to the 2022 fishing year  
for multi-year specs

(May 1, 2022 - April 30, 2023)

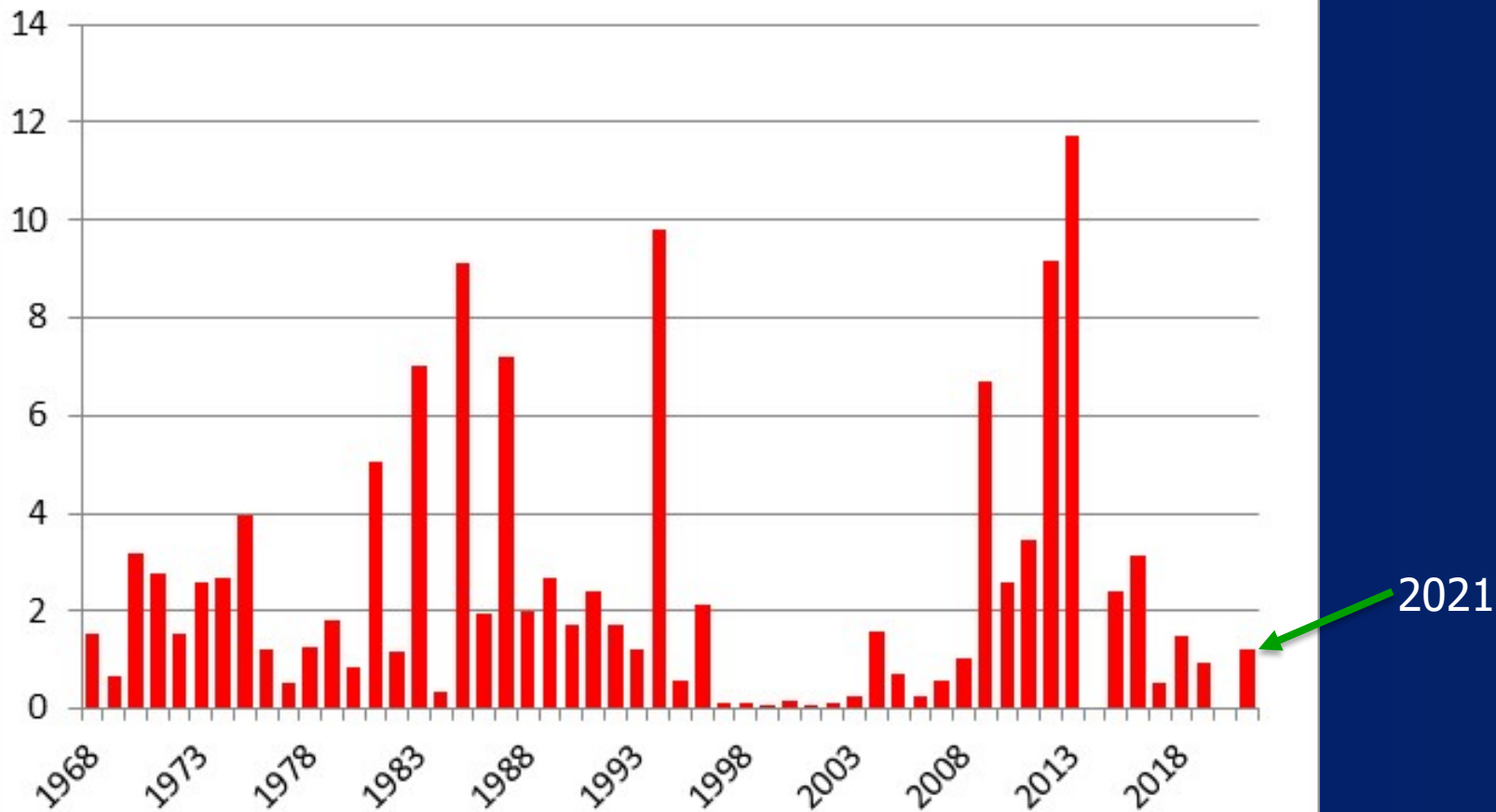
# Survey Update

## Female spawning stock biomass Estimates 1982-2021



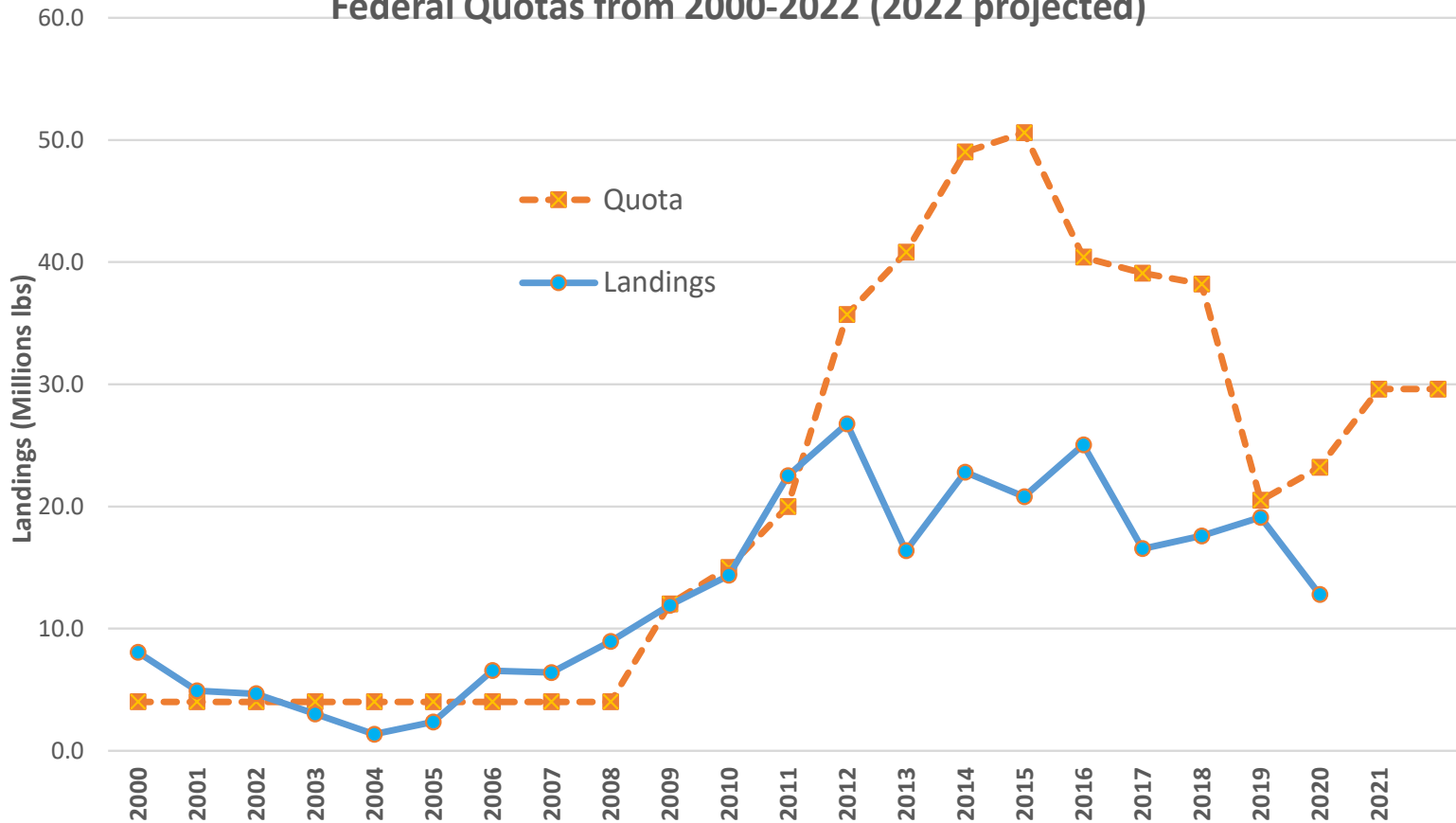
# Survey Update

## Pup Index, 1968-2021

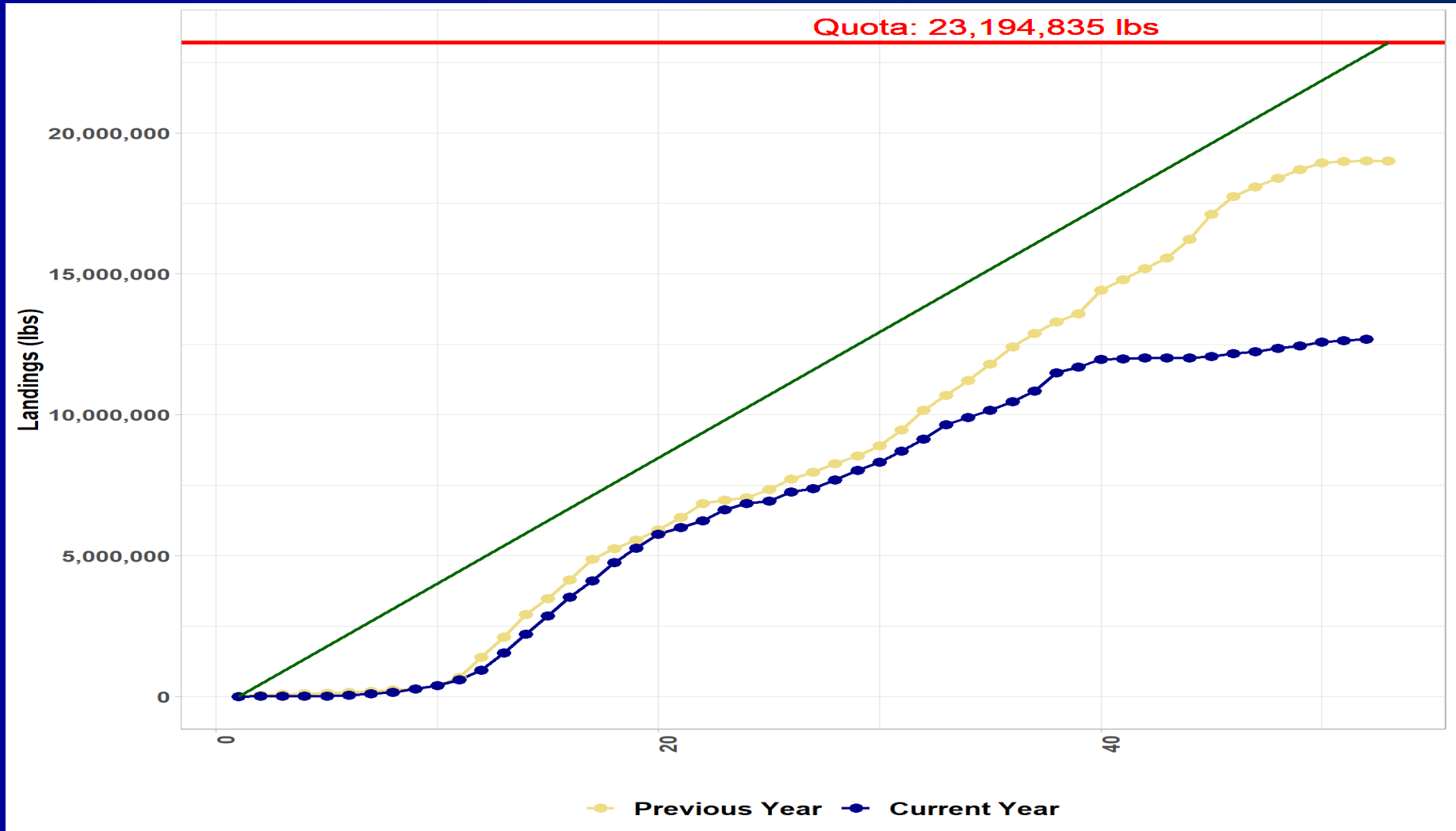


# Landings Since Management

Commercial Spiny Dogfish Fishing Year Landings from 2000-2020 and Federal Quotas from 2000-2022 (2022 projected)

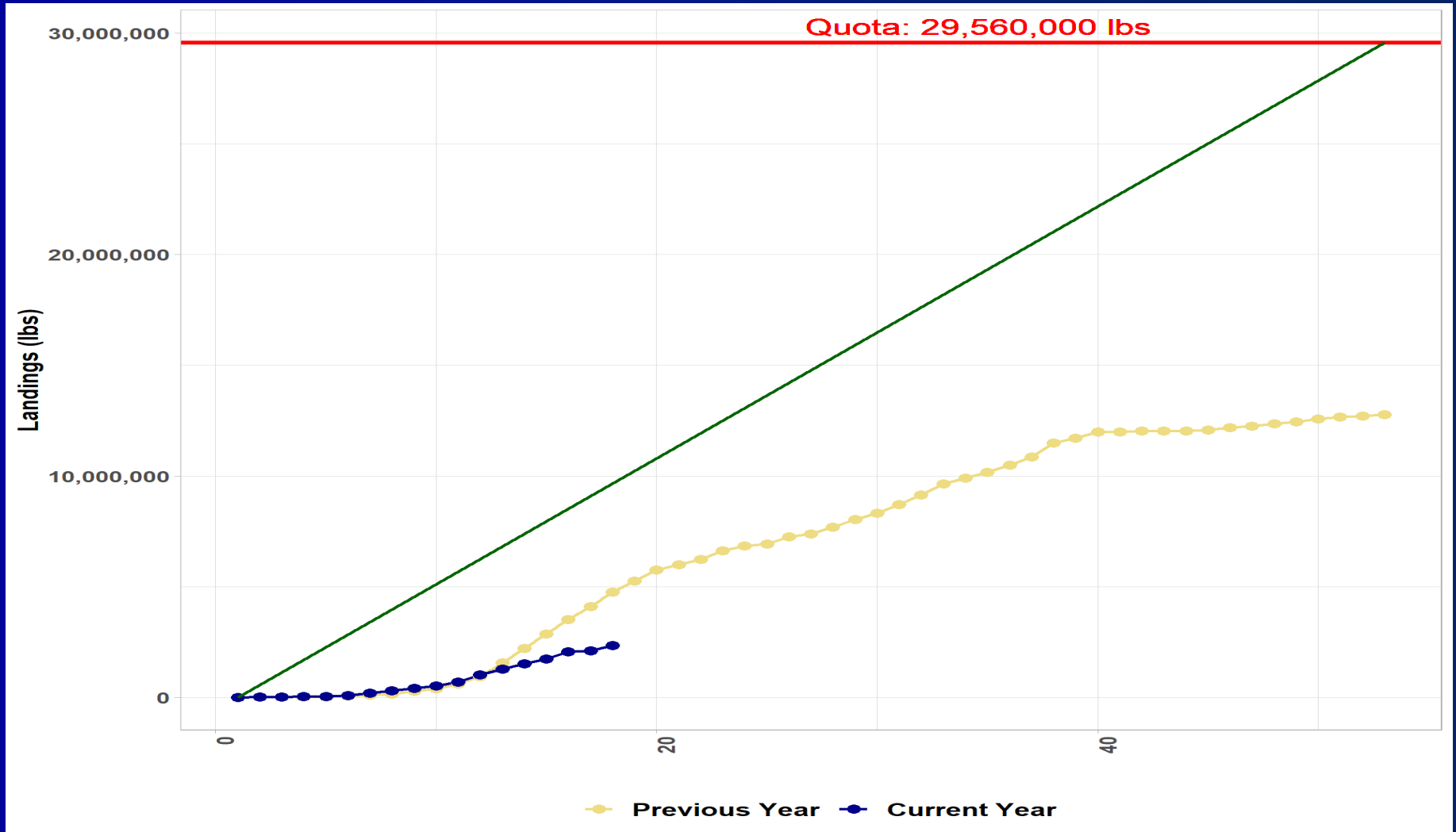


# Dogfish Landings 2019 and 2020 FYs



Yellow = 2019 Fishing Year, Blue = 2020

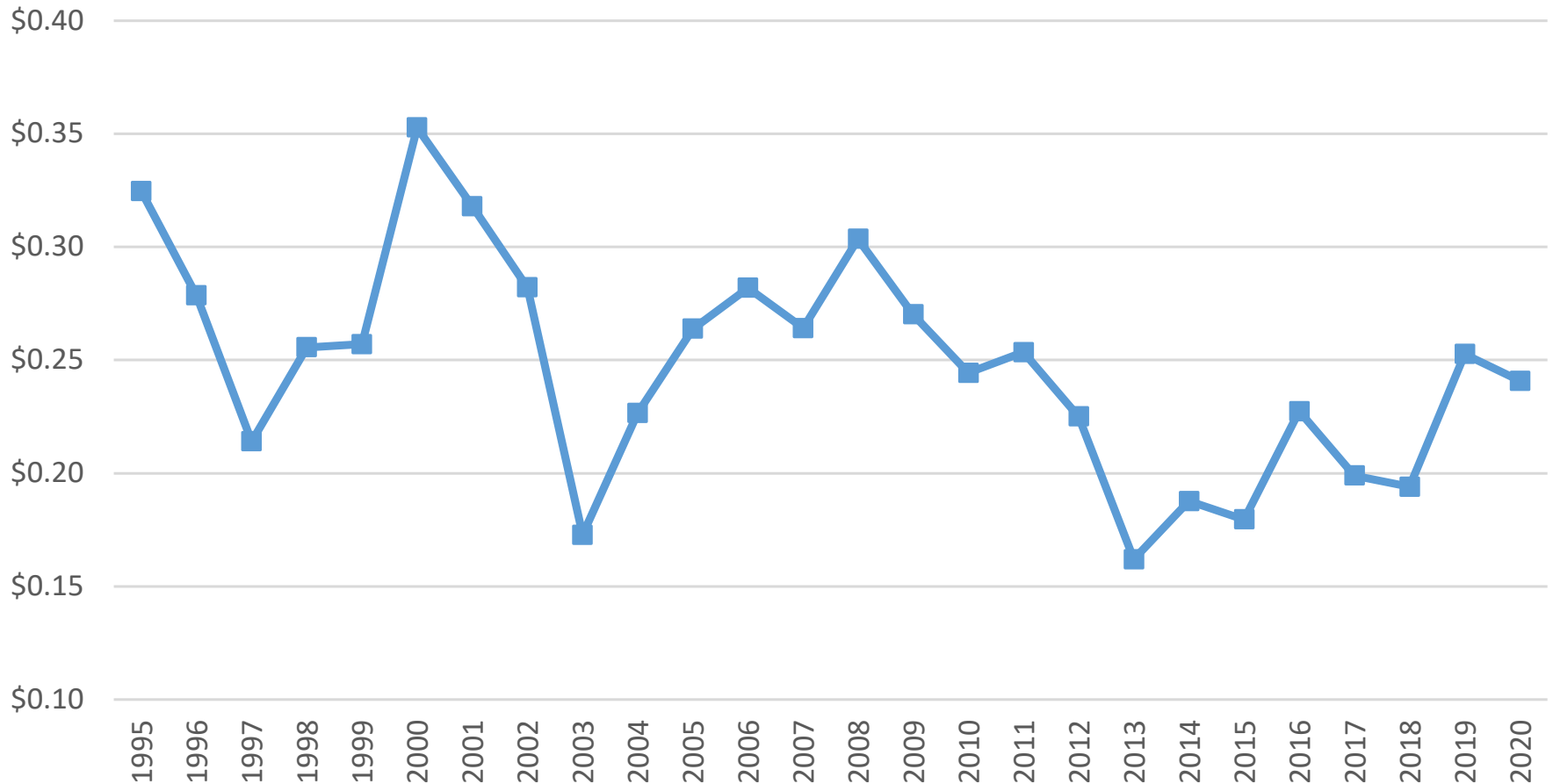
# Dogfish Landings 2020 and 2021 FYs



Yellow = 2020 Fishing Year, Blue = 2021

# Price thru 2020 Fishing Year

Dogfish Price, Inflation Adjusted (2020) \$/pound





# Dogfish – Advisory Panel FPR

- Similar sentiments as previous years
- Markets and trip limit restrict landings
- Continued erosion of participants
  - Increased fuel costs and opportunities in other fisheries
- 2020 VA landings particularly off
  - Other opportunities, weather
- MA off to a slow start for 2021 fishing year (summer)
  - Availability, skate issue, other opportunities

# Dogfish – Advisory Panel FPR

## ■ Science Concerns

- Bigelow operations performance
- Dogfish distribution and meaning for trawl index
  - Survey area and water column usage
- Fecundity

# Dogfish Staff Recommendation

- Developing some concern
- Maintain current/projected ABC

# Assessment Update

- Had kick-off meeting.
- Evaluating resources to look at aging spines to re-examine growth (currently use a 40 year old growth curve).
- Council and SSC research recommendations highlighted.
- Just getting started...