

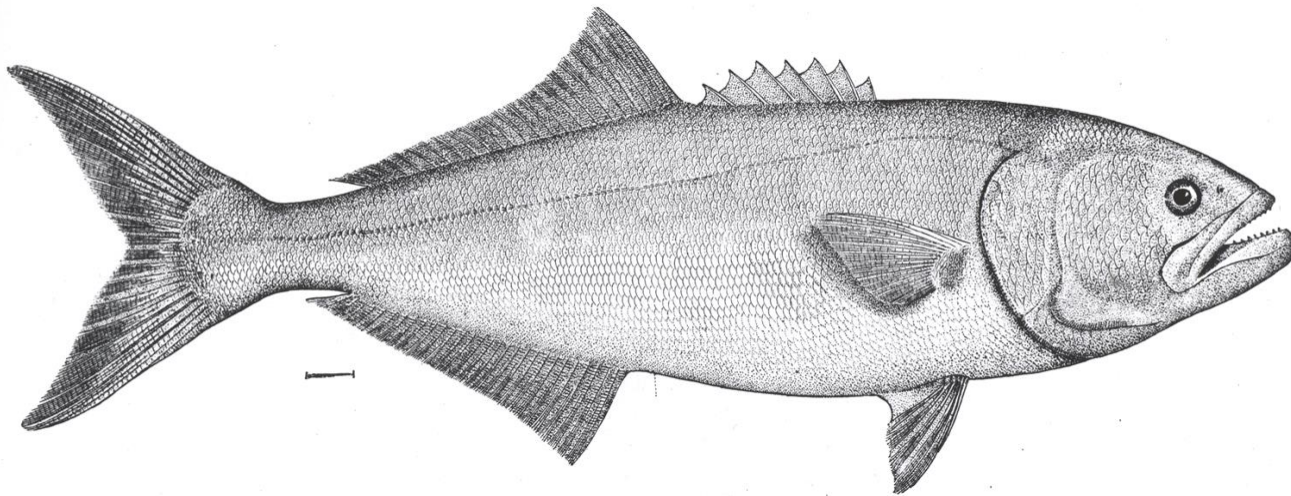


NOAA
FISHERIES

NEFSC

Bluefish (*Pomatomus saltatrix*) Data Update

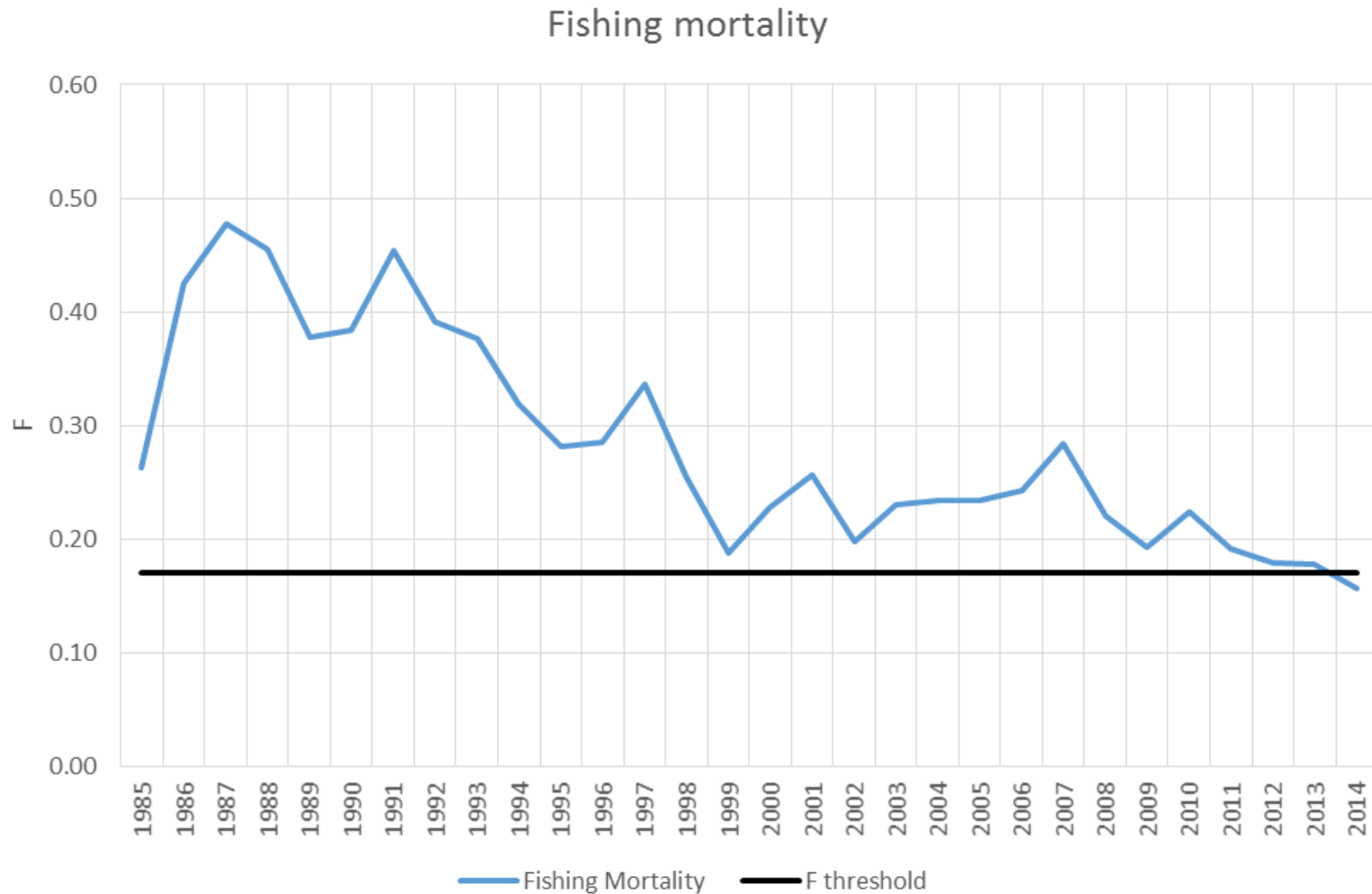
July 2016



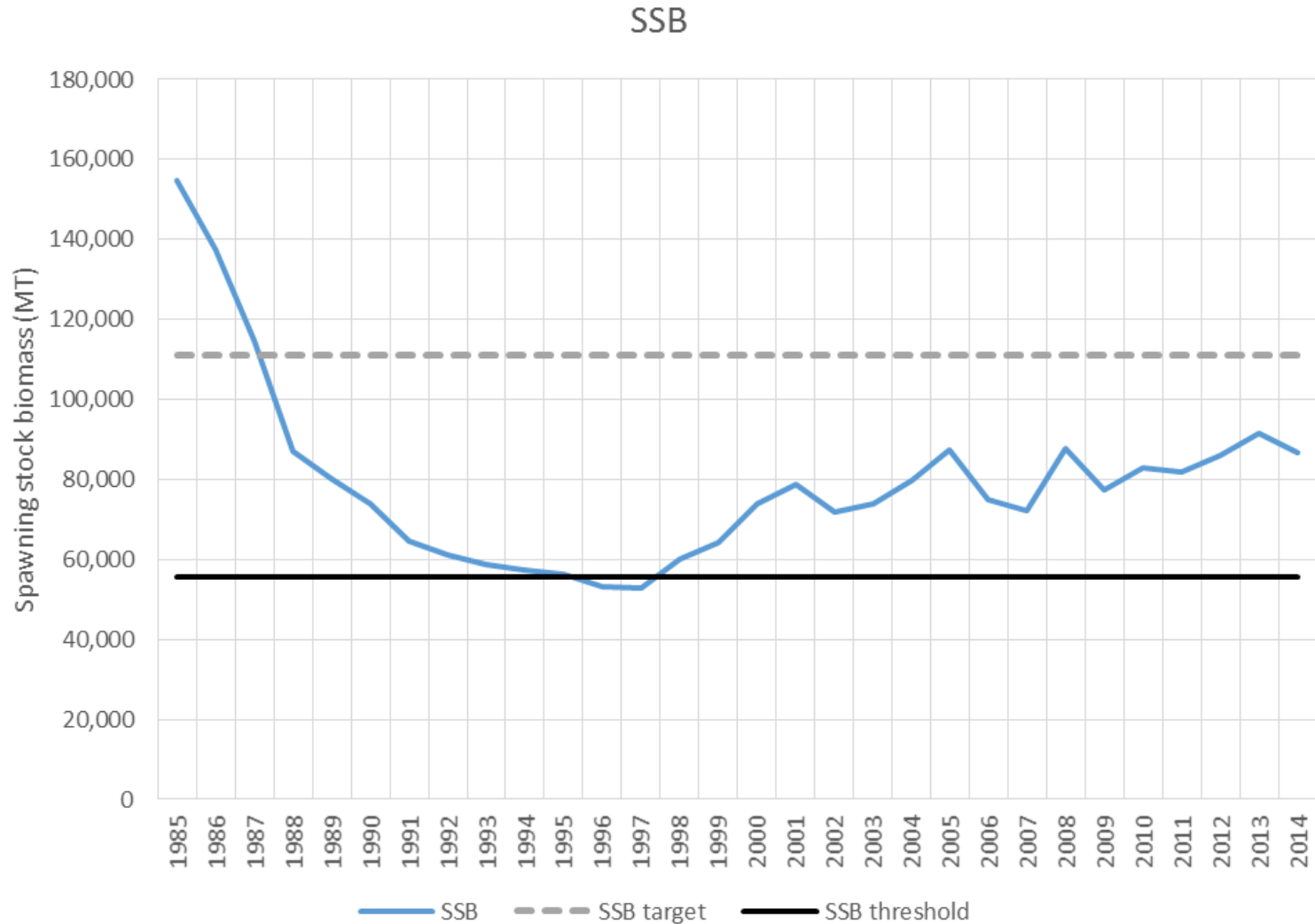
Bluefish Assessment History

- Last assessment: SARC60 in 2015
- Statistical catch-at-age model: ASAP ages 0-6+, years 1985-2014
- Reference points: F_{MSY} proxy ($F_{40\%}$) = 0.17*, SSB_{MSY} proxy = 111,228 MT
 - *MAFMC SSC changed F reference point from $F_{40\%}$ to $F_{35\%}$ = 0.19
- Stock status from SARC60: not overfished ($SSB_{2014} = 86,534$ MT > $\frac{1}{2} SSB_{MSY}$ proxy), overfishing not occurring ($F_{2014} = 0.157 < F_{MSY}$ proxy)

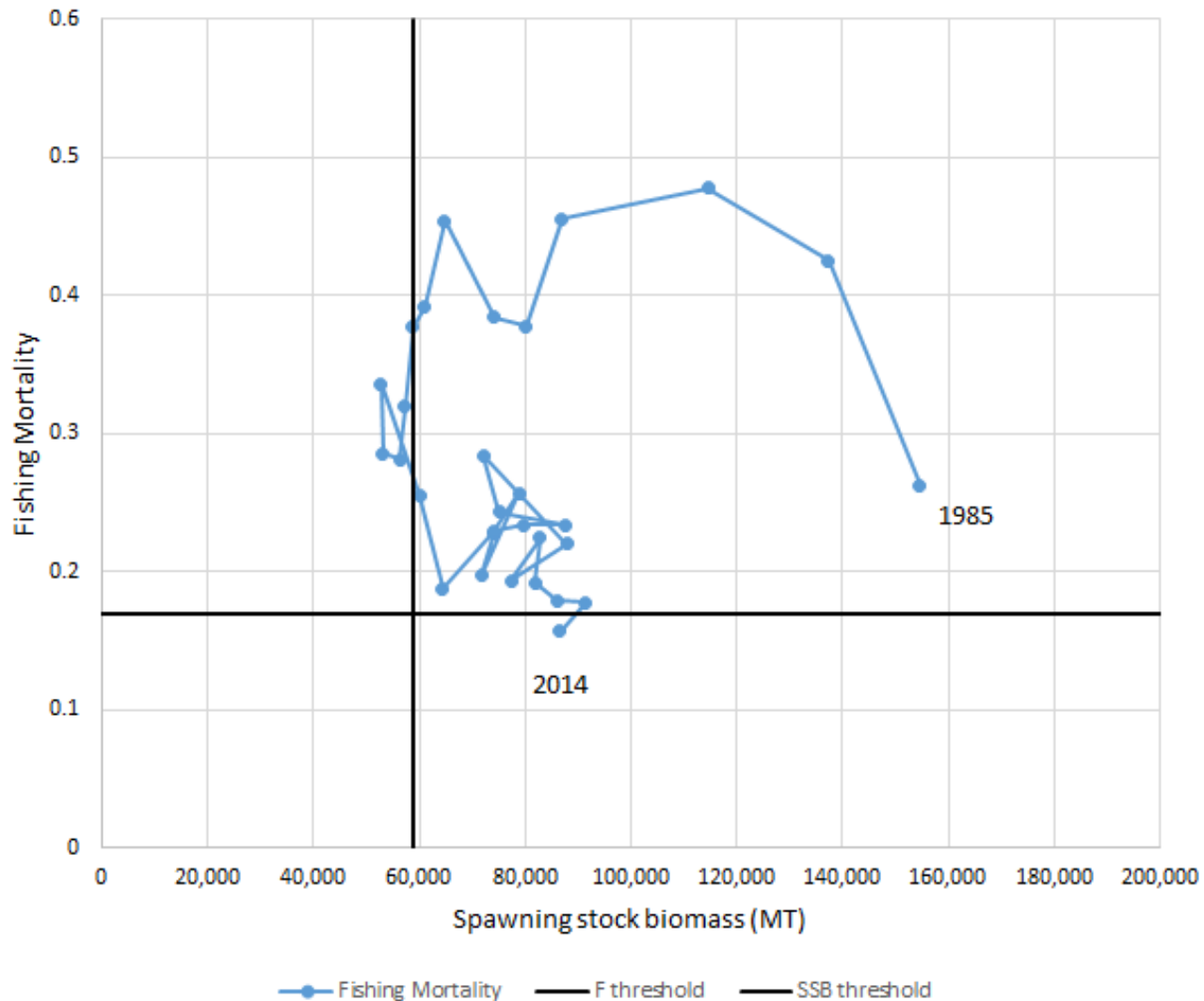
Bluefish Fishing Mortality from 1985-2014



Bluefish SSB from 1985-2014



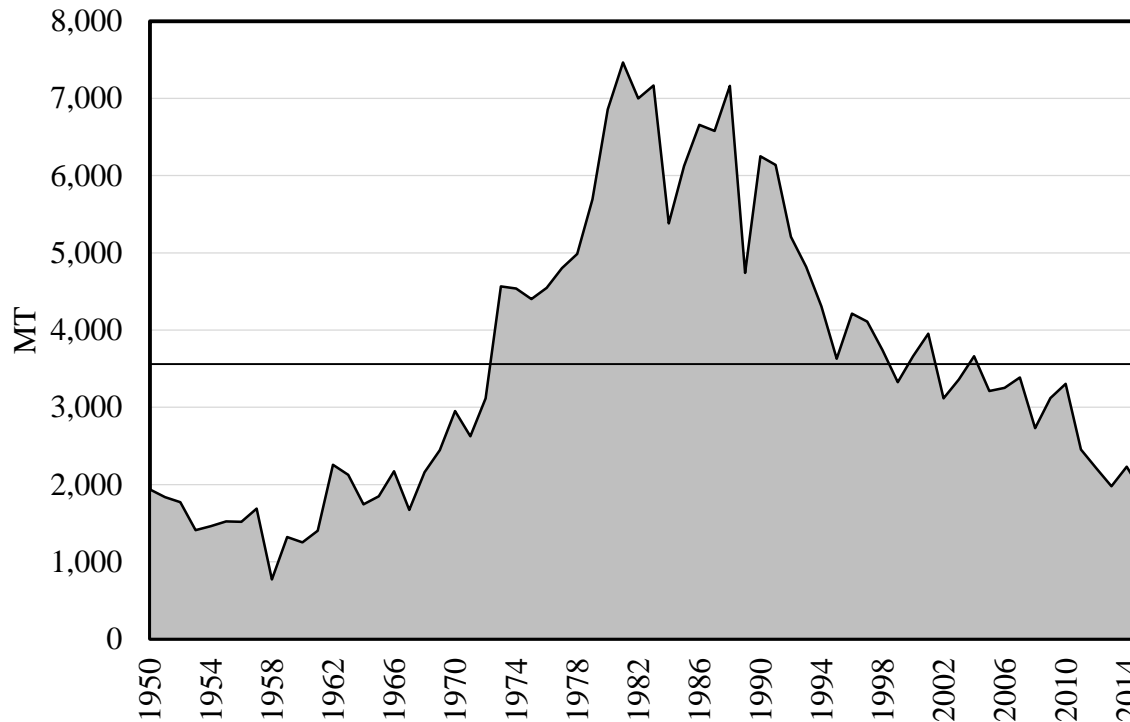
Bluefish Stock Status from SARC60



2016 Data Update

Commercial Landings

Commercial Bluefish Landings 1950-2015



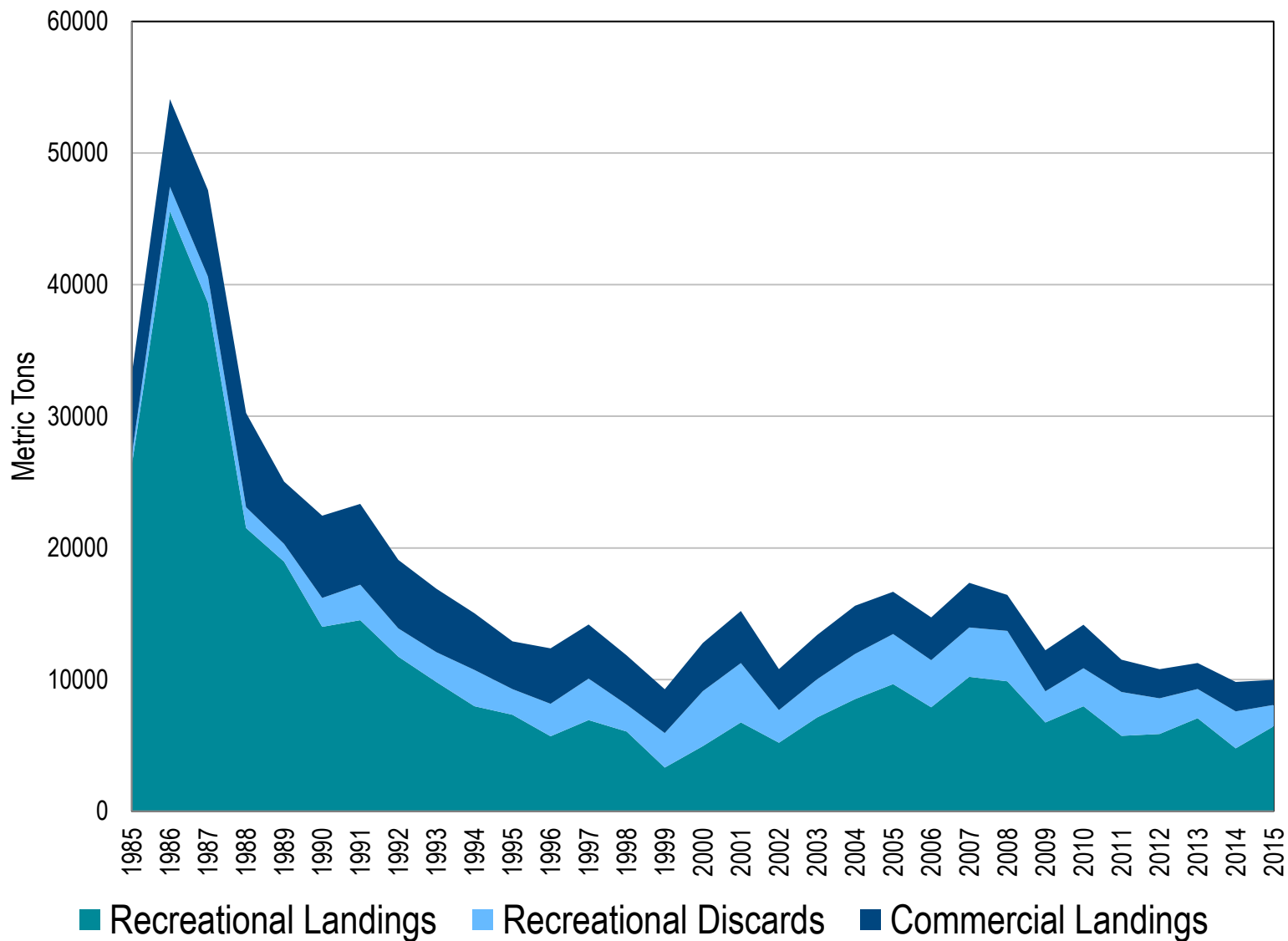
- **Commercial:** Over the past 65 years commercial landings have ranged from a low of 771 MT in 1958 to a high of 7,465 MT 1981, decreasing steadily since then to **1,902 MT** in 2015.

Recreational Landings and Discards

- Recreational Landings have averaged 14,000 MT since 1981, starting at the highest value of 43,222 MT in 1981, declined to a low of 3,744 MT in 1999, and increased slowly to a value of **6,450 MT** in 2015.
- Recreational discards have averaged 1,553 MT since 1981, and have increased slowly throughout the time series to a value of 2,961 MT in 2015, then decreasing in 2015 to a value of **1,623 MT**.
- Total recreational catch in 2015 was 8,073 MT which accounts for 81% of the total catch (**9,975 MT**) for bluefish.

*** Note: L-W coefficients for bluefish were used to derive all recreational weights. Mean weight values from MRIP were not used.

Bluefish Total Catch 1985 to 2015



Updated Surveys

- Seven fishery-independent indices and one fishery-dependent index were updated through 2015:
 - NEFSC Fall Bigelow
 - NEAMAP inshore trawl
 - CT Long-Island Sound Trawl
 - NJ Ocean trawl
 - NC Pamlico Sound Independent Gillnet
 - SEAMAP Fall Trawl (Age 0)
 - Composite seine YoY (Age 0)
 - MRIP index
- All surveys except NEAMAP and SEAMAP declined from 2014 values.

