

# Meet Community Offshore Wind

## *Local, Clean Energy For All*

Mid-Atlantic Fishery Management Council

Philadelphia, PA

August 10, 2022

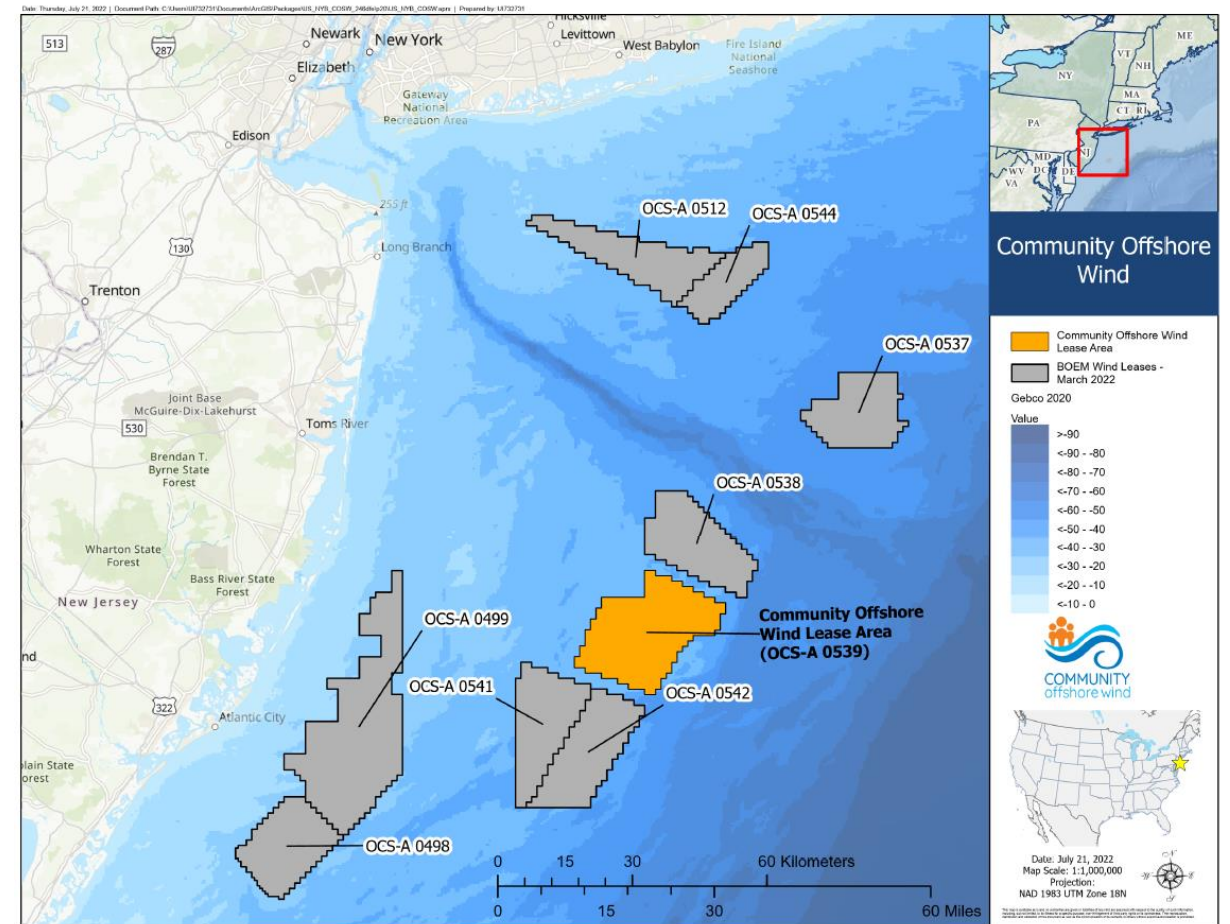


# Background



- On February 23, 2022, BOEM held an auction for six offshore wind lease areas in the New York Bight (NYB).
- Area 539 awarded to Community Offshore Wind; a joint venture of RWE Renewables and National Grid Ventures.
- Area 539 deconflicted before auction to address fisheries and benthic habitats in the region: removed part of lease area 540 and all of 543, added a 2.5 NM buffer between the eastern border of Area 539 and existing scallop access area, included a permanent prohibition on placement of objects in about 12,000 acres along the northern, southern, and eastern borders of lease area.

KEY FACTS	
Lease Size	125,964 acres/197 sq. mi.
Estimated Capacity	3 GW
Estimated Home Served	1.1 million
Distance to New York	92 km/50 nm
Distance to New Jersey	53 km/29 nm



# RWE Renewables and National Grid Ventures

- **Two companies, One mission**

Build strong sustainable communities for the future

- **RWE Renewables**

One of the world's leading renewable energy companies. Global leader in technological innovation—testing world's first recyclable offshore blade, piloting vibratory pile driving technology. Committed to 50 GW green power generation by 2030. RWE has built 20 offshore wind projects to date with renewable energy projects in over 25 different countries. <https://americas.rwe.com/>

- **National Grid Ventures**

A competitive division of National Grid.

Local and international expertise in developing large-scale infrastructure and clean energy technologies including subsea electricity interconnectors, wind and solar power, and battery storage. Recent innovations on Long Island, NY include development of two battery energy storage systems and green hydrogen pilot program.

<https://www.nationalgrid.com/national-grid-ventures>



RWE installed the world's first recyclable wind turbine blade manufactured by Siemens Gamesa.

# Our Fisheries Team



**Deirdre Boelke, Fisheries Liaison**



- **20 years** staff with New England Fishery Management Council (NEFMC)
- **10 years** as Sea Scallop fishery plan coordinator
- Staff for Research Set Aside (RSA) Program Review and Scallop RSA Program
- Core team member of East Coast Climate Change Scenario Planning Initiative
- Masters in marine affairs; Bachelor of Science (B.S.) in biology

**Michelle Duval, Fisheries Liaison**



- **10 years** in state government, representing NC Division of Marine Fisheries on ASMFC and South Atlantic Fishery Management Council (SAFMC)
- **2 years** as Chair of the SAFMC
- **2 years** on the Mid-Atlantic Fishery Management Council (MAFMC)
- 1 year on the NEFMC Scallop Committee
- 10 years as a scientist with marine ENGO
- Ph.D. in marine ecology, B.S. biology

**Rick Robins, Marine Affairs Manager**



- **30 years** seafood processing, international marketing, and commercial fisheries development
- **8 years** as Chair of the MAFMC
- **8 years** as member of Virginia Marine Resources Commission
- **3 years** as Fisheries Liaison
- Cooperative fisheries research experience
- MBA, B.A. in economics and history

**Our team is growing!** We are in the process of adding Fisheries Representatives (FRs) and Fisheries Technical Advisors (FTAs)

# Fishery Participants and Stakeholders



## Commercial and Recreational Fisheries

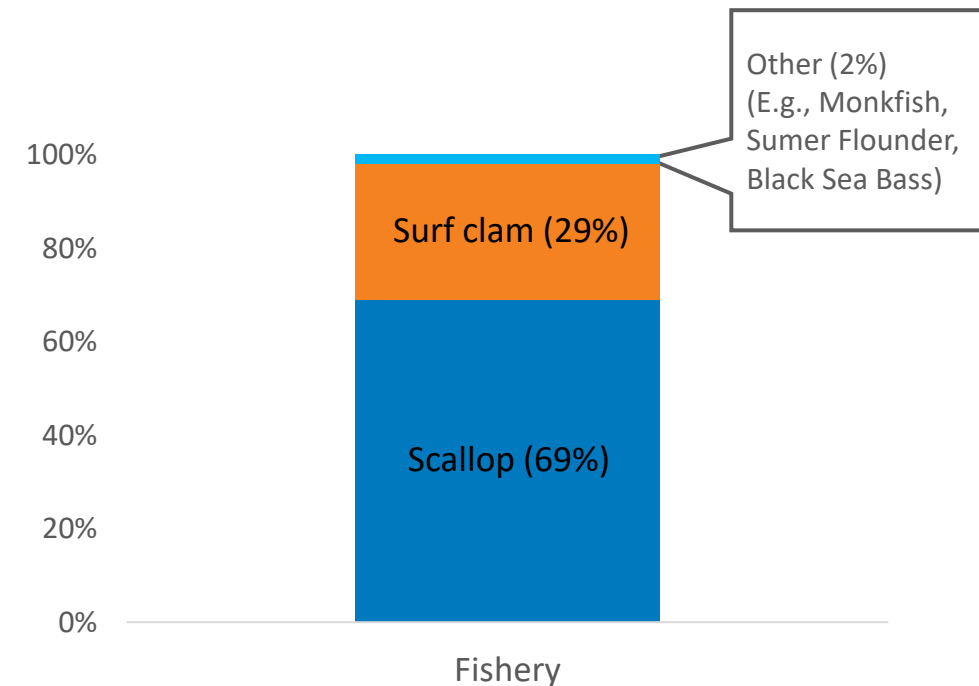
- **Sea Scallop**
  - Regional, limited access and general category activity, episodically productive
  - Some overlap with new NYB rotational access area management
- **Surfclam**
  - NJ-centered fleet, some evidence of distributional changes in resource
- **Monkfish**
  - Primarily seasonal gillnet fishery (winter/spring)
- **Summer Flounder, Black Sea Bass**
  - Primarily seasonal trawl fishery, limited pots for black sea bass
- **Seasonal Recreational Fisheries**
  - Both private anglers and for-hire fleets for summer flounder, black sea bass, bluefish, dolphinfish (mahi mahi), bluefin and yellowfin tunas. Some transit activity for HMS and deep-water species and several “prime fishing areas” near lease area

## Other stakeholders

- **Coastal and Marine recreational activities and businesses**
  - Whale and bird watching, surfing, SCUBA diving, kayaking, sailing, etc.
- **Tribes and Environmental Justice Communities**
- **Environmental organizations and general public**

### Commercial Fishing Revenue within lease area (2007-2020)

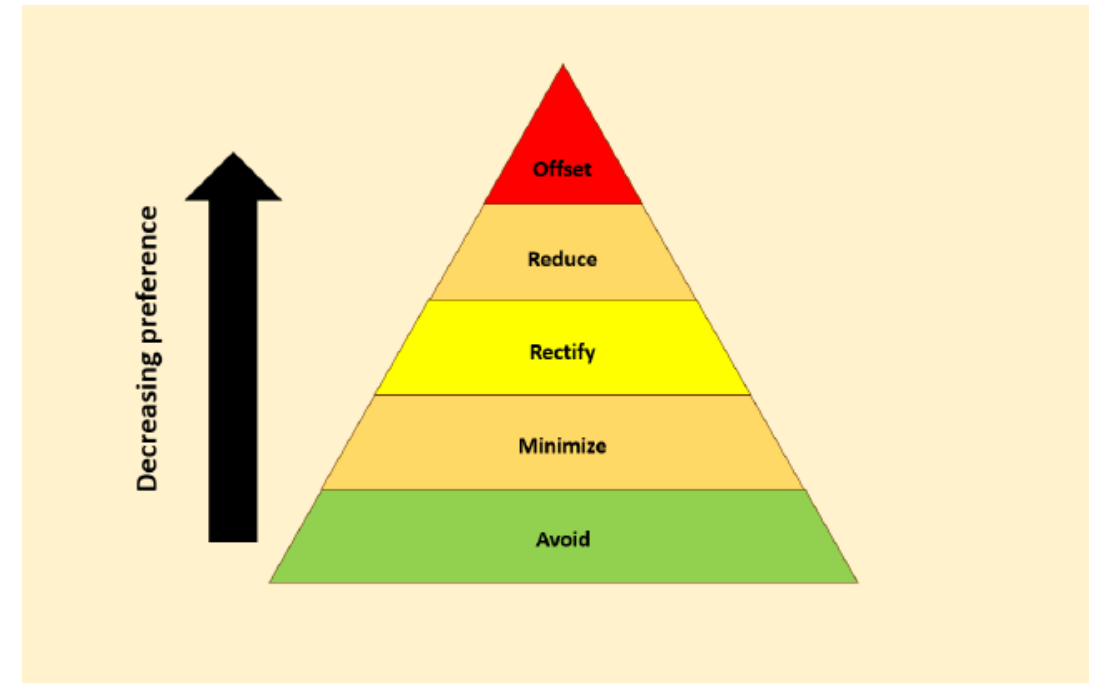
Source: NMFS, commercial dealer and vessel records





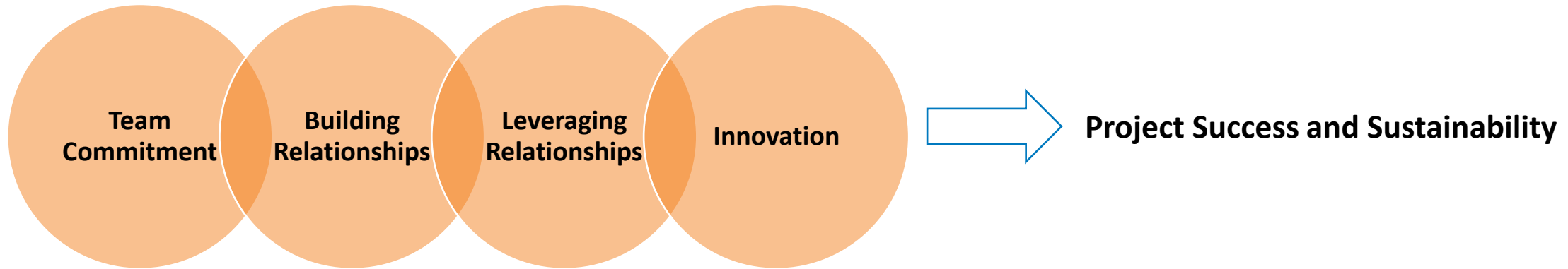
# Fisheries Mitigation Hierarchy

- Mitigation includes:
  - 1) **avoiding** impact;
  - 2) **minimizing** impact;
  - 3) **rectifying** by repairing, rehabilitating, or restoring affected environment;
  - 4) **reducing** or eliminating impact during life of action;
  - 5) **compensating** by replacing or providing substitute resources or environments (CEQ Regulations).
- Guidelines recommend strategies such as:
  - project design elements with fishery stakeholder consultation,
  - safety measures like training and vessel radar upgrades,
  - environmental monitoring, and financial compensation.
- Community Offshore Wind is actively developing these fishery mitigation strategies, as well as other programs that further support fisheries and coastal communities.



Source: Mitigation Hierarchy: Levels of mitigation in Environmental Impact Assessment, <https://eco-intelligent.com/2016/12/11/levels-of-mitigation-in-environmental-impact-assessment/>

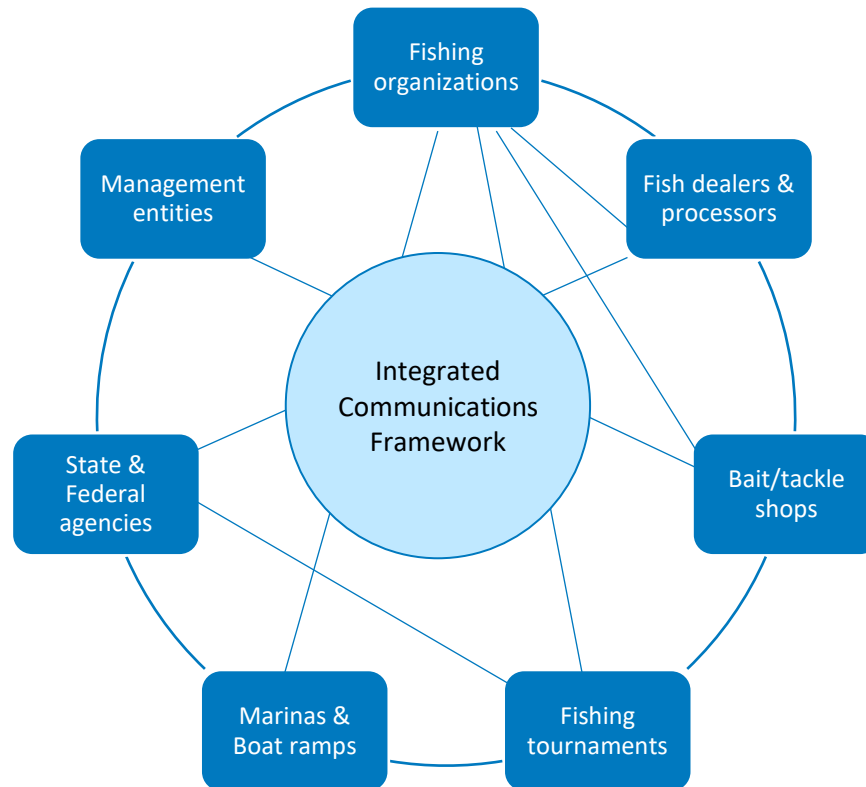
# Draft Fisheries Communications Plan (FCP)



- Draft Fisheries Communications Plan is built around core values above – our focus is safety, respect, understanding, transparency, efficiency, adaptability, equity, and collaboration
- Designed to promote a holistic, adaptive, and integrative approach to outreach and engagement in partnership with fisheries stakeholders and is **foundational to successful and sustainable project outcomes**
- **Objectives**
  - Develop a detailed technical understanding of the current and historical fisheries
  - Foster a proactive approach to promoting safety and deconflicting the operations of survey, design, and construction
  - Collaborate to avoid and minimize impacts, and identify opportunities for cooperative monitoring and research
  - Recognize and balance the need for detailed local knowledge with the burden of engagement for fisheries participants and stakeholders
  - Develop comprehensive and inclusive stakeholder engagement strategies that are sensitive to the needs of underserved communities

# Communication Strategies

## Communication Nodes



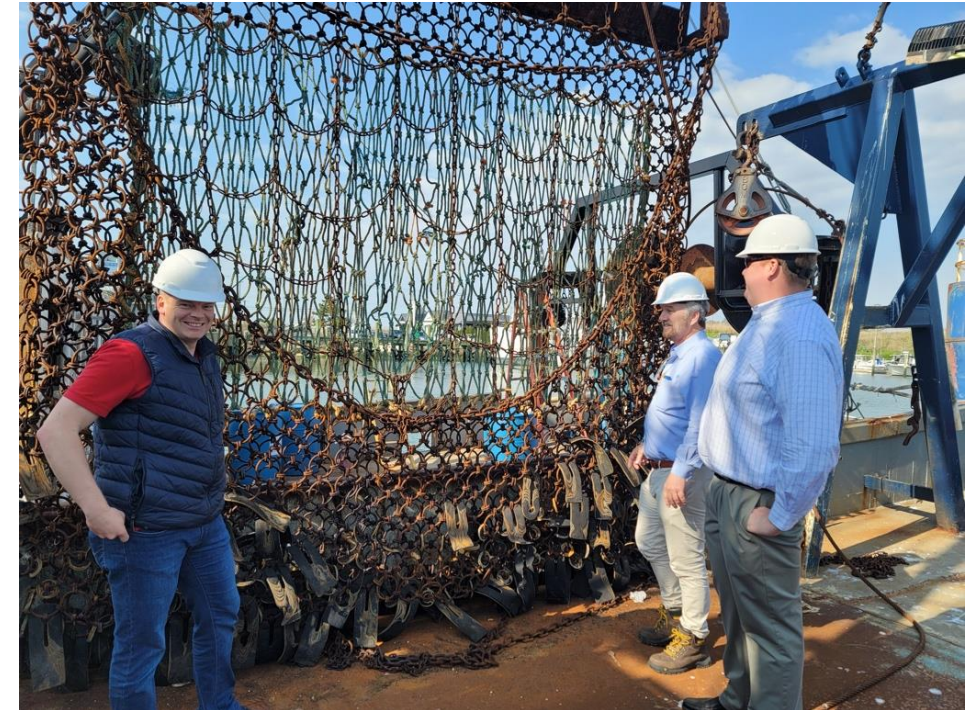
## Strategies

- Individual and small group interviews with fishing communities
- Presence at industry trade shows, fisheries management meetings
- Topic-based workshops (e.g., cable layouts, marine electronics), potentially with other developers and agencies
- Leverage existing text/email lists & newsletters from fishing organizations and management entities
- Innovative use of digital platforms (e.g., “one-stop shop”) to provide information and solicit feedback
- Commercial fishermen & vessels as onboard fisheries liaisons and scout vessels to avoid and manage survey risks
- Support for fishery research & development needs
- Cooperative resource and fishery monitoring
- **Communication and engagement strategies integrated with research, monitoring, and mitigation efforts**



## What's next? Initial input?

- On July 27, 2022, the New York State Energy Research and Development Authority (NYSERDA) published a request for proposals (RFP) seeking to procure Offshore Wind Renewable Energy Certificates (ORECs). Proposals due December 22, 2022.
- Proactive mitigation - Continue bridging and frontloading input from fishing industry to our technical engineers and project team to address potential impacts of surveys and project design.
- Strong collaboration and communication – Continue building trust and developing cooperative programs that support fishing industry and wider communities.
- Fisheries Team will vet draft fisheries communication and mitigation plans with fishing industry, managers, agencies, and other stakeholders. **Any initial input today?**
  - **Communication Plan Objectives**
  - **Communication Strategies**
  - **Range of Potential Mitigation Strategies**



Community Offshore Wind engineers on a tour of scallop vessel in Cape May, NJ in May 2022

# Let's connect! Please contact us!



## Community Offshore Wind

<https://communityoffshorewind.com/>

- Deirdre Boelke, Fisheries Liaison  
[deirdre.boelke@rwe.com](mailto:deirdre.boelke@rwe.com)  
(978) 518-0638
- Michelle Duval, Fisheries Liaison  
[michelle@mellivoraconsulting.com](mailto:michelle@mellivoraconsulting.com)  
(919) 601-3798
- Rick Robins, Marine Affairs Manager  
[rick.robins@rwe.com](mailto:rick.robins@rwe.com)  
(757) 876-3778



[communityoffshorewind.com](https://communityoffshorewind.com)



# Questions?



Community Offshore Wind volunteers at beach clean-up  
in Howard Beach, NY on June 10, 2022