

Pers com Andrew Smith, DFO,
pre-publication data through 2018 being used in 2019 Canadian assessment.

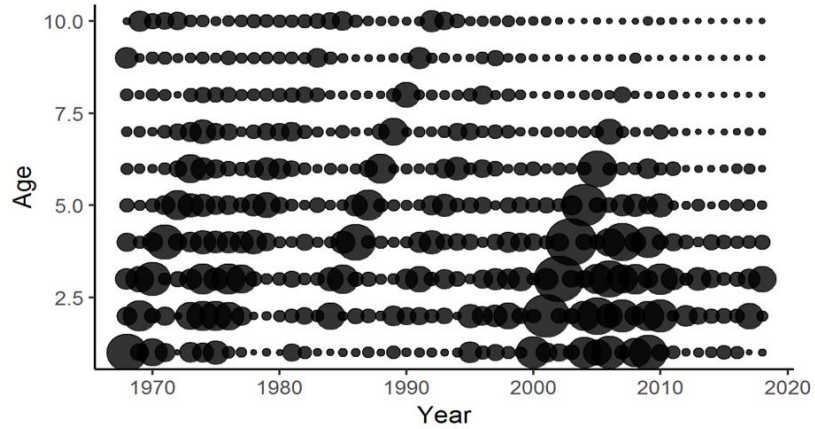


Figure 4. Catch-at-age data calculated from samples from the commercial fishery (1968-2018).

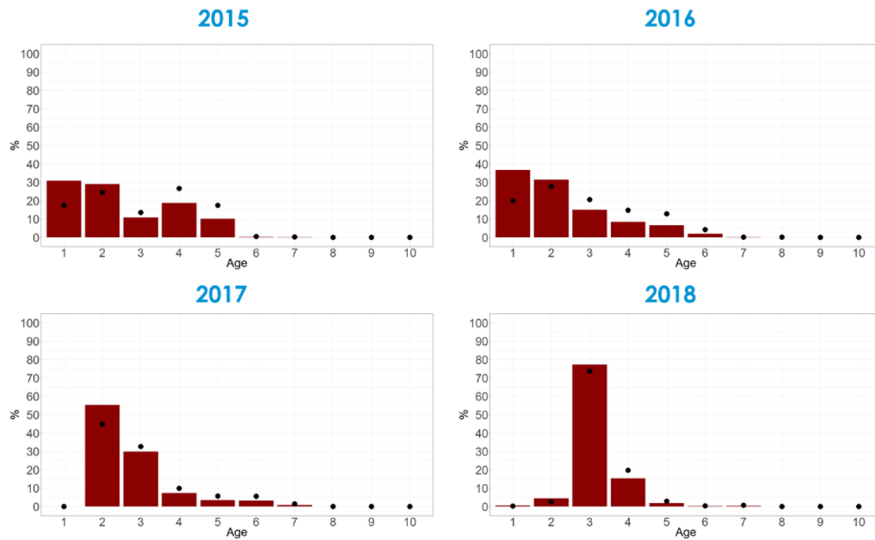


Figure 5. Catch-at-age data calculated from samples obtained from the commercial fishery (2015-2018). Red bars represent proportion of catch-at-age by number and black dots represent proportion of catch-at-age by weight (t).

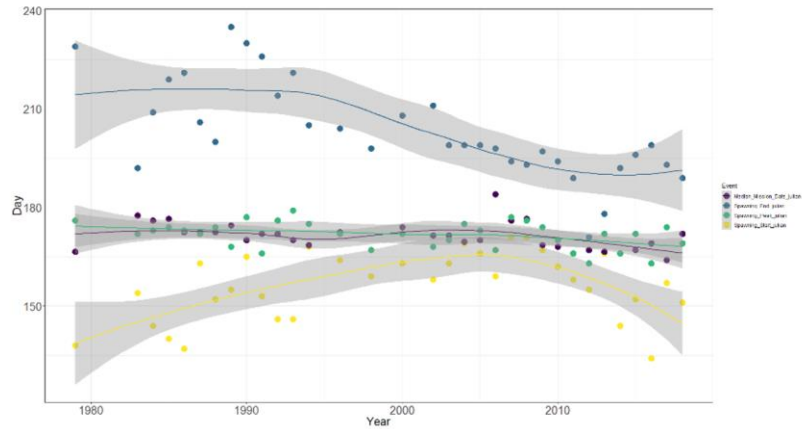


Figure 6. Atlantic mackerel spawning dates (Julian day) as calculated from biological samples from the commercial fishery. Colours indicate start date (yellow), peak spawning date (green), median mission date (violet), and spawning end date (blue).

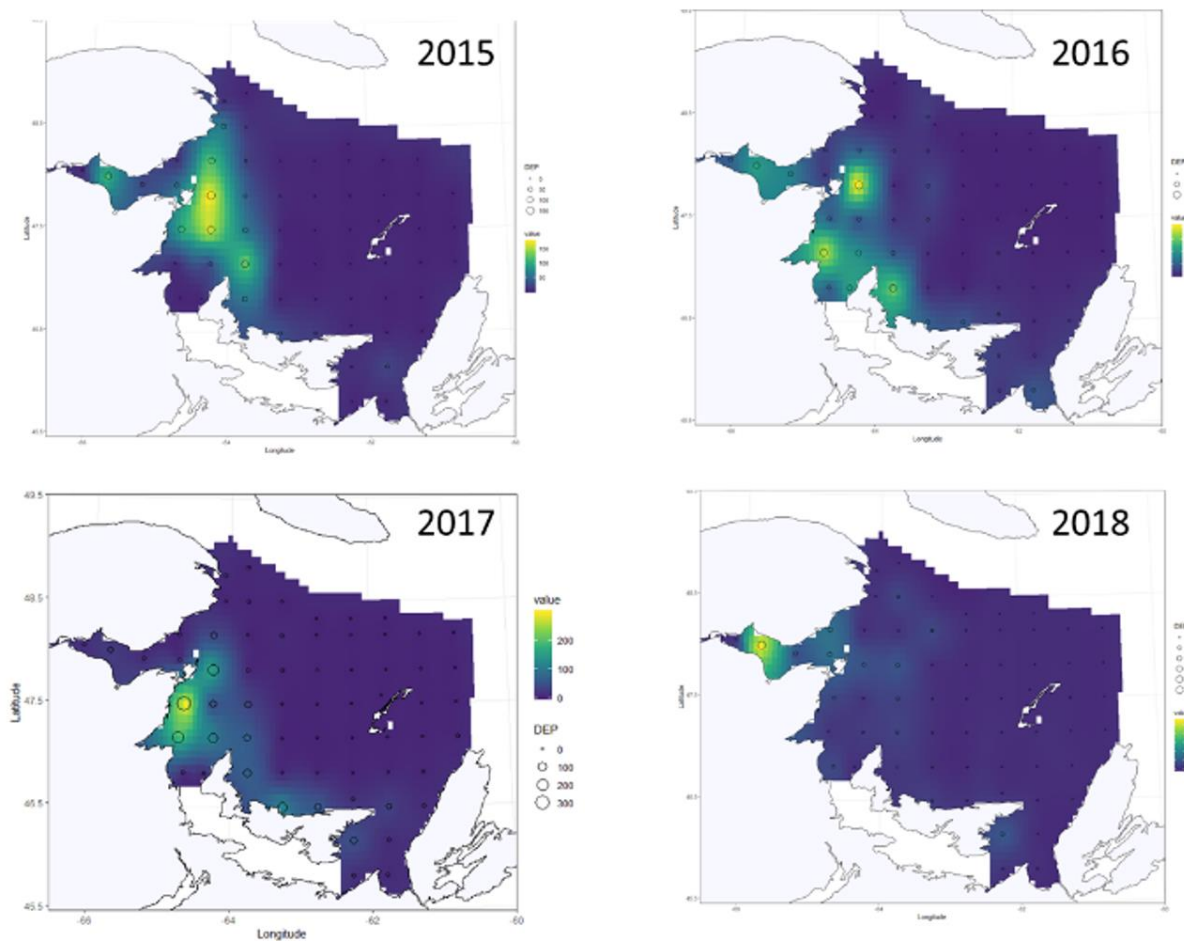


Figure 7. Daily egg production (DEP) of mackerel eggs (n/m^2) from 2015-2018. Sampling stations are indicated by circles, the size of which represents the calculated daily egg production for each station. The interpolated DEP values for the entire survey area are also shown.

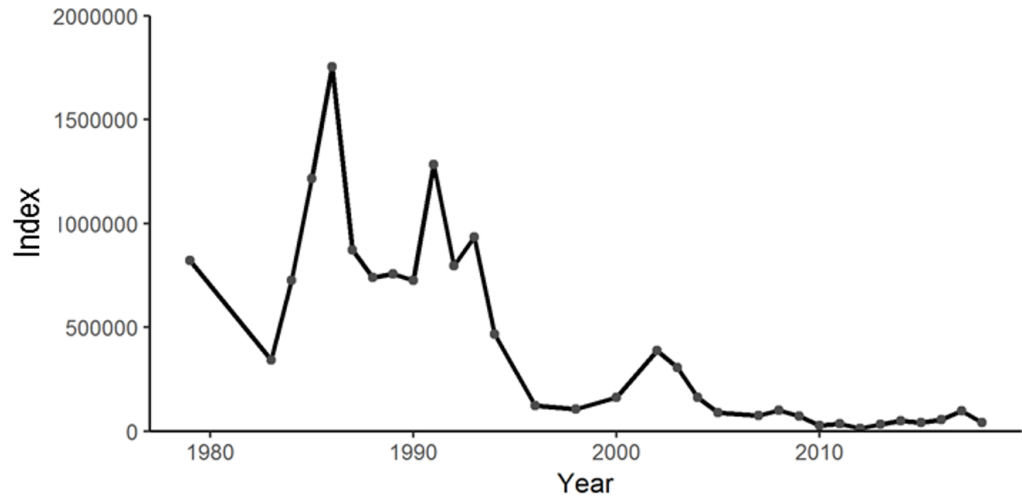


Fig. 8. Mackerel egg index calculated using the daily egg production method.